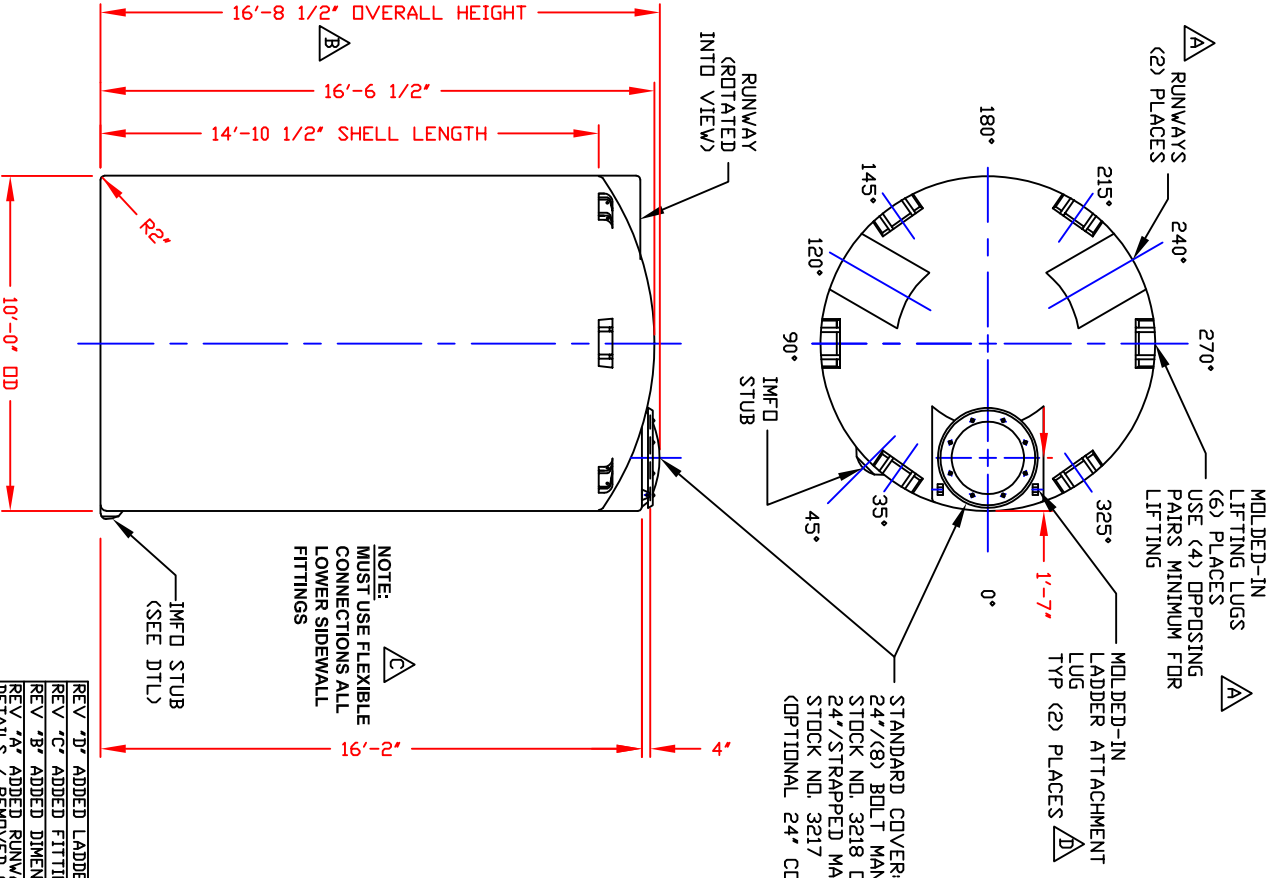
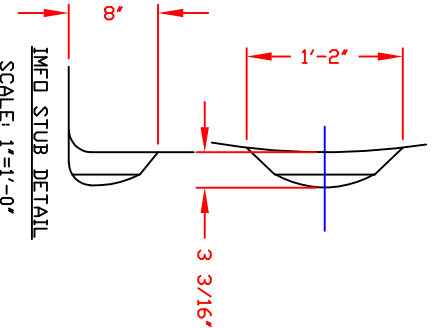
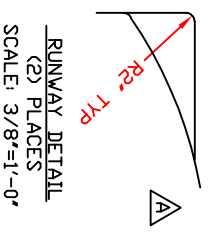
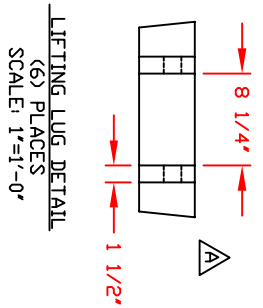


NON-CONTROLLED COPY
 INFORMATION SUBJECT TO CHANGE WITHOUT NOTICE
 VERIFY REV LEVEL OF PAPER COPY WITH REV LEVEL ON PPC WEB SITE



STANDARD COVER:
 24"/(8) BOLT MANWAY COVER/PE (SHOWN)
 STOCK NO. 3218 OR
 24"/STRAPPED MANWAY COVER/PE
 STOCK NO. 3217
 (OPTIONAL 24" COVERS AVAILABLE)



- NOTES**
1. THIS IS A COMPUTER GENERATED DWG. DO NOT REVISE BY HAND
 2. DIMENSIONS WILL VARY ±3% DUE TO VARIATIONS IN MULTIPLE MOLDS & CONDITIONS PREVALENT DURING MANUFACTURE & USAGE.
 3. MOLDED IN GALLONAGE MARKERS @ APPROX 54" IN 200 GAL INCREMENTS UP TO 8200 GAL.

CALCULATED CAPACITIES/ VOLUME IN U.S. GALLONS	
DESIGN CAP	VOL TOTAL VOL
8512	8911
399	

CONFIDENTIAL PROPERTY OF
 POLY PROCESSING COMPANY
 NOT FOR REPRINT OR USE
 WITHOUT PERMISSION

REV 'D'	ADDED LADDER ATTACHMENT LUG BY:JUB 5/14/04 CKWM
REV 'C'	ADDED FITTING NOTE BY:MBV 2/17/03 CKUB
REV 'B'	ADDED DIMENSION BY:JUB 10/21/02 CKMBV
REV 'A'	ADDED RUNWAYS, LIFTING LUGS & DETAILS / REMOVED GUTTERS BY:JUB 1/28/02 CKWM

DWG TITLE		NOZZLE SCHEDULE & ACCESSORIES	
8500 GALLON UPRIGHT TANK		SERVICE	DEG ELEV
SCALE: 1/4"=1'-0"	DATE: 10/10/19	MK	STOCK NO/ SIZE
		FITTING	
		Fitting	
Central Region P.O. Box 480, Orem Utah 84057-0480 801-225-2625 FAX: 801-225-2629		DR: B. HARPER CK:	
SHEET 1 OF 1		COMPUTER FILE	
VERT-08500		REV D	