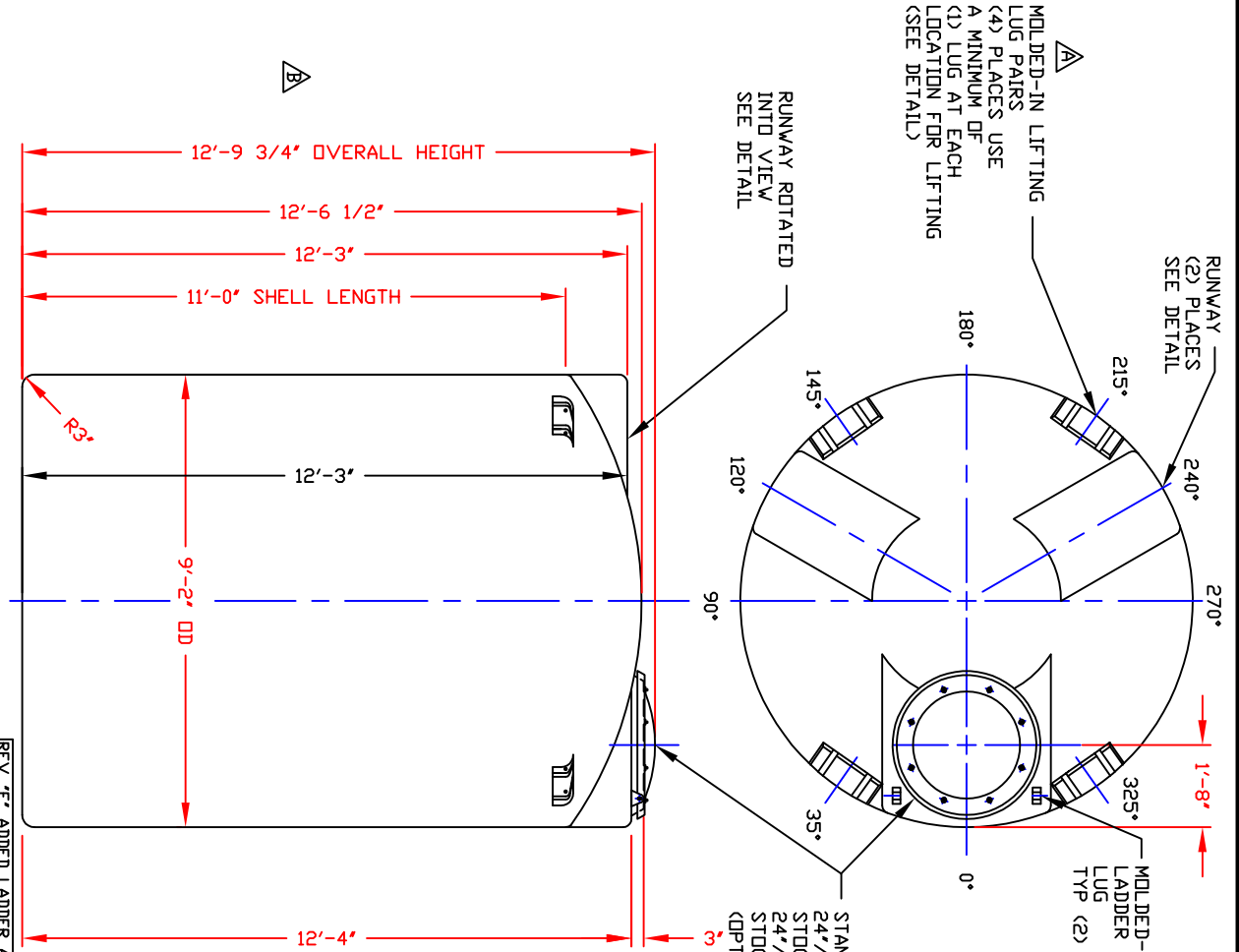


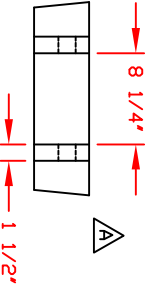
NON-CONTROLLED COPY

INFORMATION SUBJECT TO CHANGE WITHOUT NOTICE

VERIFY REV LEVEL OF PAPER COPY WITH REV LEVEL ON PPC WEB SITE



STANDARD COVER:  
24"/(8) BOLT MANWAY COVER/PE STOCK NO. 3218 OR  
24"/STRAPPED MANWAY COVER/PE STOCK NO. 3217  
(OPTIONAL 24" COVERS AVAILABLE)



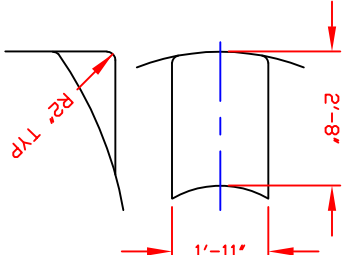
NOTE:  
MUST USE FLEXIBLE CONNECTIONS ALL LOWER SIDEWALL FITTINGS

REVISIONS:

REV.	DATE	BY	DESCRIPTION
REV. 'E'	ADDED LADDER ATTACHMENT LUGS	BY: JB	6/9/04 CKJWM
REV. 'D'	DELETED RUNWAY NOTE	BY: JB	8/21/03 CKJWB
REV. 'C'	ADDED FITTING NOTE	BY: MBV	2/17/03 CKJWB
REV. 'B'	ADDED DIMENSION	BY: JB	10/21/02 CKJMB
REV. 'A'	ADDED LIFTING LUGS & DETAIL	BY: JB	8/15/02 CKJWM

NOZZLE SCHEDULE & ACCESSORIES

SERVICE	MK	STOCK	NOZ. SIZE	FITTING	DEG. ELEV.



- NOTES:
- THIS IS A COMPUTER GENERATED DWG. DO NOT REVISE BY HAND.
  - DIMENSIONS WILL VARY ±3% DUE TO VARIATIONS IN MULTIPLE MOLDS & CONDITIONS PREVALENT DURING MANUFACTURE & USAGE.
  - 5 1/2" WIDE MOLDED IN GALLONAGE MARKERS IN MANWAY AREA IN 200 GAL INCREMENTS UP TO 5600 GAL. AVOID WHEN FITTING EASTERN REGION.
  - GALLONAGE MARKERS IN MANWAY AREA IN 200 GAL INCREMENTS UP TO 5200 GAL. CENTRAL REGION.

CALCULATED CAPACITIES/VOLUME IN U.S. GALLONS

DESIGN CAP.	DOME VOLUME	TOTAL VOL.
5315	307	5622

CONFIDENTIAL PROPERTY OF  
POLY PROCESSING COMPANY  
NOT FOR REPRINT OR USE  
WITHOUT PERMISSION

DWG TITLE: **5300 GALLON UPRIGHT TANK**

SCALE: 3/8"=1'-0"

DATE: 10/10/19

**Poly Processing**  
SOLUTIONS. SIMPLIFIED.

CALCULATED CAPACITIES/VOLUME IN U.S. GALLONS  
DESIGN CAP. DOME VOLUME TOTAL VOL.  
5315 307 5622

CONFIDENTIAL PROPERTY OF  
POLY PROCESSING COMPANY  
NOT FOR REPRINT OR USE  
WITHOUT PERMISSION

SHEET	1 OF 1	COMPUTER FILE	DR. B. HARPER
REVISION	1 VERT	-05300	E