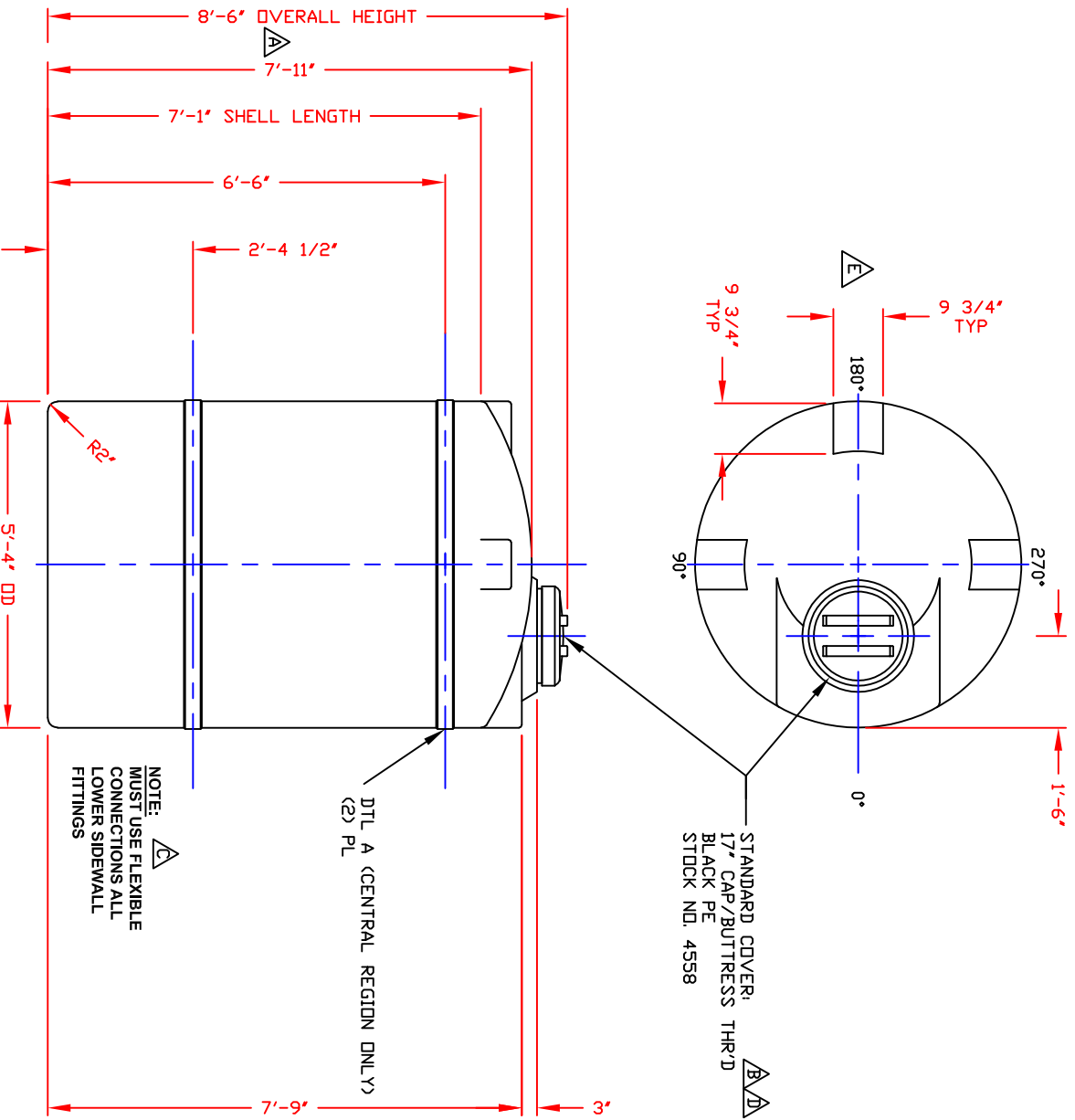


NON-CONTROLLED COPY

INFORMATION SUBJECT TO CHANGE WITHOUT NOTICE

VERIFY REV LEVEL OF PAPER COPY WITH REV LEVEL ON PDC WEB SITE



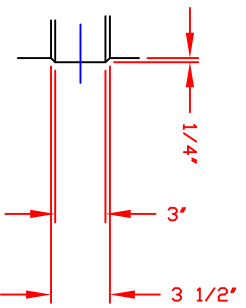
NOTE:
MUST USE FLEXIBLE CONNECTIONS ALL LOWER SIDEWALL FITTINGS

STANDARD COVER:
17" CAP/BUTRESS THR'D
BLACK PE
STOCK NO. 4558

DTL A (CENTRAL REGION ONLY)
(2) PL

REV 'E'	ADDED FTG FLATS TO DOME BY:JB 12/31/12 CK:WM
REV 'D'	REVISED COVER BY:JB 7/23/09 CK:WM
REV 'C'	ADDED FITTING NOTE BY:MBW 2/11/03 CK:JB
REV 'B'	REVISED LID BY:MBW 2/11/03 CK:JB
REV 'A'	ADDED DIMENSION BY:JB 10/15/02 CK:MBW

SERVICE	MK	STOCK	NOI	SIZE	FITTING	DEG	ELEV



DETAIL A
MOLDED STIFFENER BAND
(2) PLACES
SCALE: 1 1/2"=1'0"

NOTES
1. THIS IS A COMPUTER GENERATED DWG. DO NOT REVISE BY HAND.
2. DIMENSIONS WILL VARY ±3% DUE TO VARIATIONS IN MULTIPLE MOLDS & CONDITIONS PREVALENT DURING MANUFACTURE & USAGE.
3. 4" WIDE MOLDED IN GALLONAGE MARKERS AT APPROX. 15" UP TO 1000 GAL. AVOID WHEN FITTING. CENTRAL REGION.
4. 4" WIDE MOLDED IN GALLONAGE MARKERS AT APPROX. 6" UP TO 1000 GAL. AVOID WHEN FITTING. EASTERN REGION.

CALCULATED CAPACITIES/ VOLUME IN U.S. GALLONS	
DESIGN CAP DOME	VOL/TOTAL VOL
1158	1229
	61

CONFIDENTIAL PROPERTY OF
POLY PROCESSING COMPANY
NOT FOR REPRINT OR USE
WITHOUT PERMISSION

DWG TITLE	1150 GALLON UPRIGHT TANK	
SCALE:	1/2"=1'-0"	DR: B. HARPER
DATE:	10/8/19	CK:
		Central Region P.O. Box 486 Oneida, NY 13622 Fax: 315-769-9788 Email: sales@polyprocessing.com
SHEET	1 OF 1	COMPUTER FILE
REV	1	VERT-01150