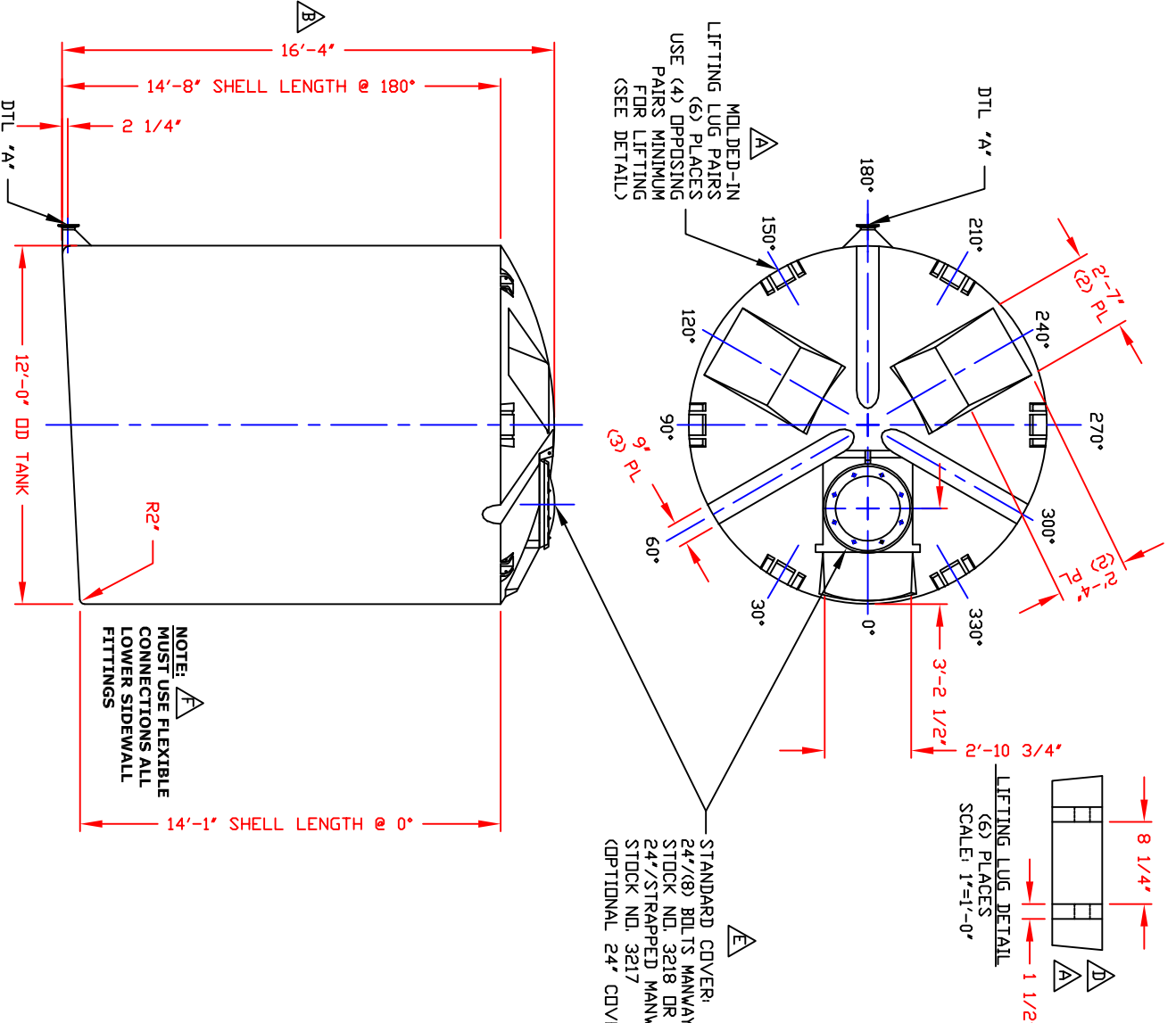
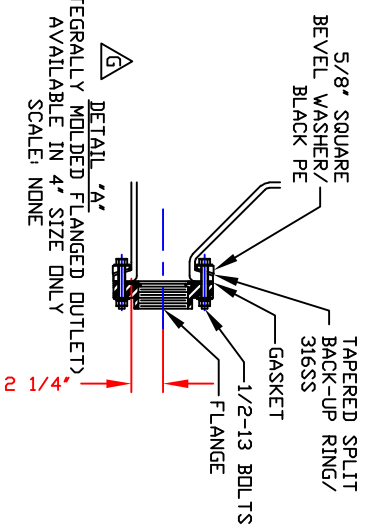


NON-CONTROLLED COPY
 INFORMATION SUBJECT TO CHANGE WITHOUT NOTICE
 VERIFY REV LEVEL OF PAPER COPY WITH REV LEVEL ON PPC WEB SITE

- REV 'A' ADDED LIFTING LUGS & DETAIL BY:JB 4/1/02 CK:WM
- REV 'B' DID SAY 16-5 1/2" BY:JB 4/1/02 CK:MBW
- REV 'C' REVISED CALCULATED CAPACITY BY:JB 4/1/02 CK:MBW
- REV 'D' REVISED LIFTING LUG DETAIL BY:JB 1/14/03 CK:WM
- REV 'E' REVISED DOME & MWY CONFIGURATION BY:JB 1/14/03 CK:WM
- REV 'F' ADDED FITTING NOTE BY:JB 2/13/03 CK:MBW
- REV 'G' REVISED IMFD STYLE BY:JB 4/30/03 CK:WM



STANDARD COVER:
 24"/(8) BOLTS MANWAY COVER/PE (SHOWN)
 STOCK NO. 3218 DR
 24"/STRAPPED MANWAY COVER/PE
 STOCK NO. 3217
 (OPTIONAL 24" COVERS AVAILABLE)



- NOTES
1. THIS IS A COMPUTER GENERATED DWG. DO NOT REVISE BY HAND.
 2. DIMENSIONS WILL VARY ±3% DUE TO VARIATIONS IN MULTIPLE MOLDS & CONDITIONS PREVALENT DURING MANUFACTURE & USAGE.
 3. NO MOLDED IN GALLONAGE MARKERS THIS TANK.

C	CALCULATED CAPACITIES/ VOLUME IN U.S. GALLONS	DESIGN CAP	DOME	TOTAL VOL
	11814	640	12454	
CONFIDENTIAL PROPERTY OF POLY PROCESSING COMPANY NOT FOR REPRINT OR USE WITHOUT PERMISSION				

DWG TITLE: 11800 GALLON UPRIGHT SLOPE BOTTOM IMFD TANK

SCALE: 1/4"=1'-0"	DATE: 09/09/19	 POLY PROCESSING SOLUTIONS, SUPERLITE	Western Region 1800 South Main Street Cody, WY 82401 TEL: 307-586-0400	DR: B. HARPER
SHEET 1 OF 1			COMPUTER FILE	

SERVICE	MK STOCK NO	SIZE	FITTING	DEG ELEV