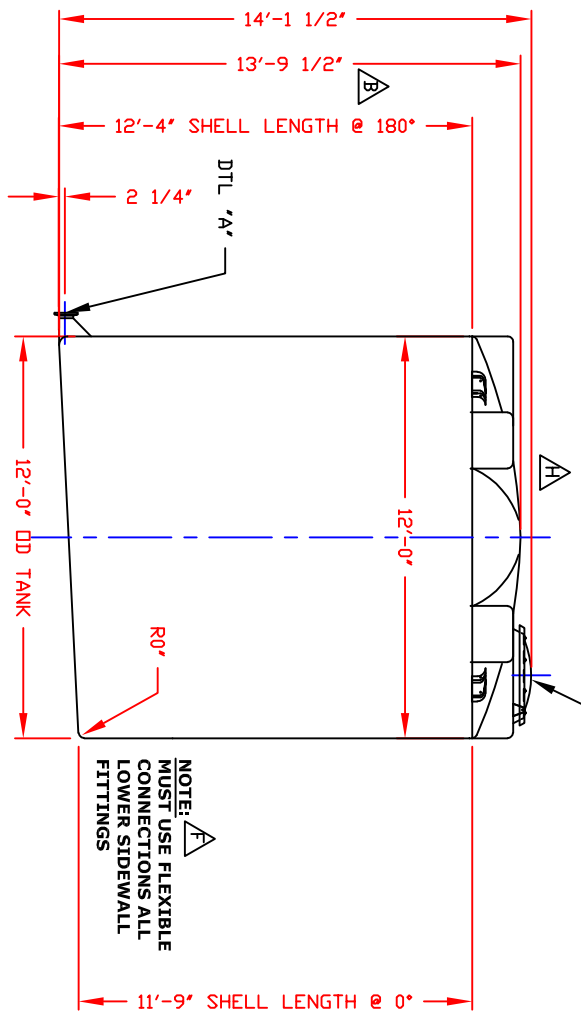
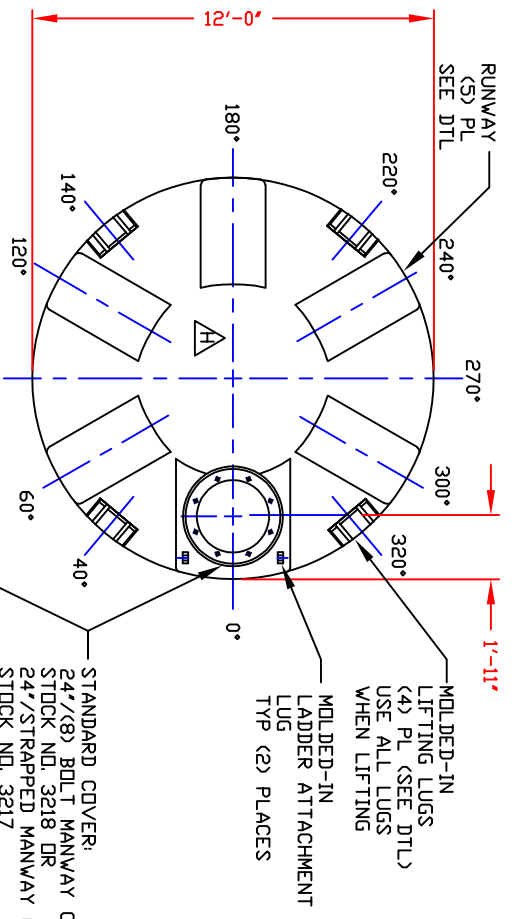
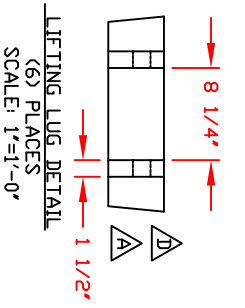
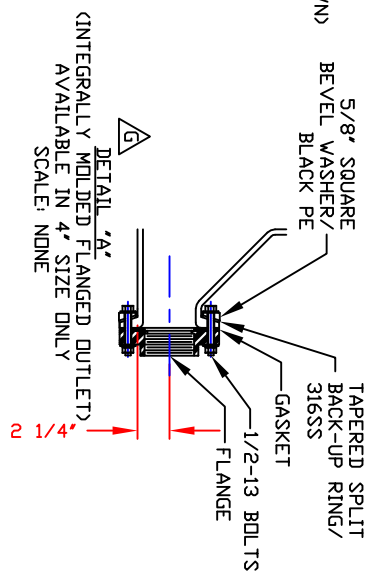


NON-CONTROLLED COPY
 INFORMATION SUBJECT TO CHANGE WITHOUT NOTICE
 VERIFY REV LEVEL OF PAPER COPY WITH REV LEVEL ON PDC WEB SITE



NOTE: F
 MUST USE FLEXIBLE CONNECTIONS ALL LOWER SIDEWALL FITTINGS

NOZZLE SCHEDULE & ACCESSORIES		DEG ELEV
SERVICE	MK STOCK NO/ SIZE	FITTING



- NOTES**
1. THIS IS A COMPUTER GENERATED DWG. DO NOT REVISE BY HAND.
 2. DIMENSIONS WILL VARY ±3% DUE TO VARIATIONS IN MULTIPLE MOLDS & CONDITIONS PREVALENT DURING MANUFACTURE & USAGE.
 3. NO MOLDED IN GALLONAGE MARKERS THIS TANK.

△C

CALCULATED CAPACITIES/VOLUME IN U.S. GALLONS	DESIGN CAP DOME VOL TOTAL VOL
9867	640 10507

CONFIDENTIAL PROPERTY OF POLY PROCESSING COMPANY NOT FOR REPRINT OR USE WITHOUT PERMISSION

REV

REV	DESCRIPTION	BY	DATE
REV 'H'	CHANGED DOME BY: BH 1/12/2021		
REV 'G'	REVISED IMF D STYLE BY: JB 4/30/03 CK/M		
REV 'F'	ADDED FITTING NOTE BY: JB 2/13/03 CK/M		
REV 'E'	REVISED DOME & MVY CONFIGURATION BY: JB 1/14/03 CK/M		
REV 'D'	REVISED LIFTING LUG DETAIL BY: JB 1/14/03 CK/M		
REV 'C'	REVISED CALCULATED CAPACITY BY: JB 3/28/02 CK/M		
REV 'B'	DID SAY 14'-1 1/2" BY: JB 3/28/02 CK/M		
REV 'A'	ADDED LIFTING LUGS & DETAIL BY: JB 3/25/02 CK/M		

DWG TITLE
 9850 GALLON SLOPE BOTTOM IMF D TANK

SCALE: 1/4"=1'-0"

DATE: 1/12/2021

POLY PROCESSING COMPANY, LTD.

Western Region
 1000 South Main Street
 6007-360-0000
 FAX: 6007-360-0000

DR: B. HARPER

CK:

SHEET: 1 OF 1

COMPUTER FILE: IMF D-S-09850

REV: H