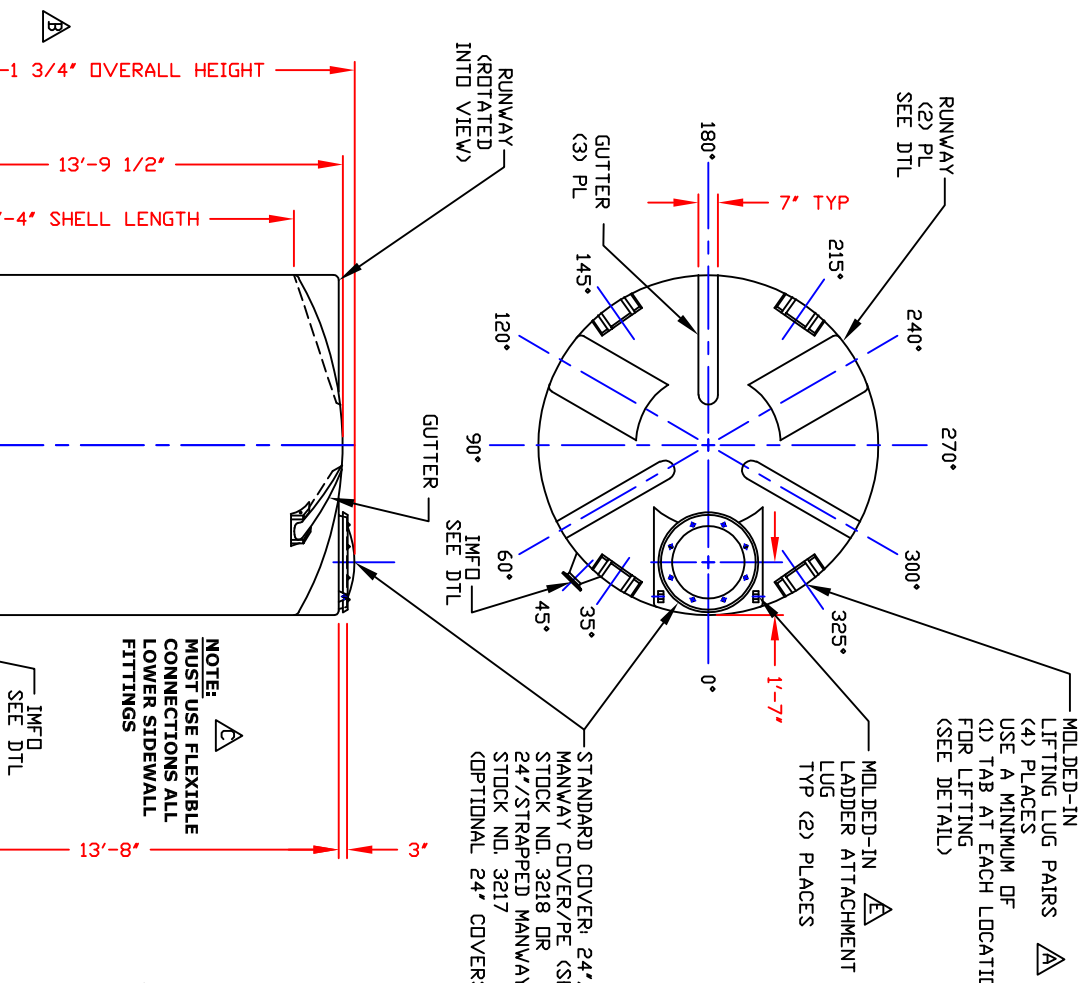


NON-CONTROLLED COPY
 INFORMATION SUBJECT TO CHANGE WITHOUT NOTICE
 VERIFY REV LEVEL OF PAPER COPY WITH REV LEVEL ON PFC WEB SITE

NOZZLE SCHEDULE & ACCESSORIES		
SERVICE	MK STOCK NO/ SIZE	DEG ELEV



14'-1 3/4" OVERALL HEIGHT
 13'-9 1/2"
 12'-4" SHELL LENGTH
 10'-2" DD TANK
 13'-8"

NOTE:
 MUST USE FLEXIBLE CONNECTIONS ALL LOWER SIDEWALL FITTINGS

IMFD SEE DTL
 3"

REV 'E' ADDED LADDER ATTACHMENT LUGS BY:UB 7/21/04 CK:MM
 REV 'D' ADDED IMFD SIZE BY:JB 6/17/04 CK:MMB
 REV 'C' ADDED FITTING NOTE BY:MMB 3/3/03 CK:JB
 REV 'B' ADDED DIMENSION BY:JB 10/21/02 CK:MMB
 REV 'A' ADDED LIFTING LUGS & DETAILS BY:JB 7/11/02 CK:MM

DWG TITLE
7300 GALLON IMFD TANK

SCALE: 1/4"=1'-0"

DATE: 09/19/19

DR: B. HARPER

DESIGN CAP DONE VOL TOTAL VOL
 7311 376 7687

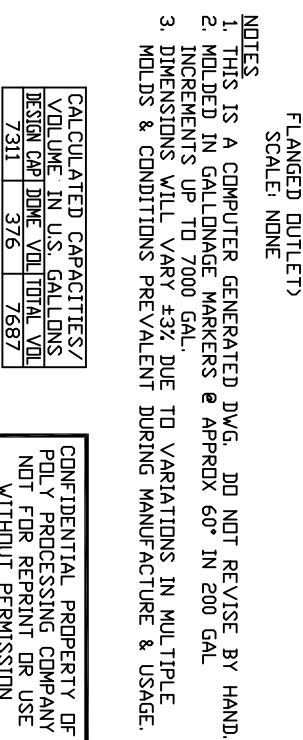
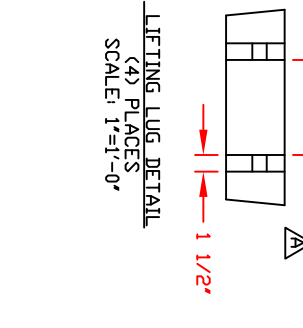
CALCULATED CAPACITIES/
 VOL LIME IN U.S. GALLONS
 7311 376 7687

CONFIDENTIAL PROPERTY OF
 POLY PROCESSING COMPANY
 NOT FOR REPRINT OR USE
 WITHOUT PERMISSION

POLY PROCESSING COMPANY
 6000 W. 20th Street
 Ft. Worth, TX 76116
 (817) 348-2400

Central Region
 P.O. Box 45900
 Dallas, TX 75245-9000
 (972) 348-2400

SHEET 1 OF 1
 COMPUTER FILE
 IMFD-F-07300



- NOTES
- THIS IS A COMPUTER GENERATED DWG. DO NOT REVISE BY HAND.
 - MOLDED IN GALLONAGE MARKERS @ APPROX 60" IN 200 GAL INCREMENTS UP TO 7000 GAL.
 - DIMENSIONS WILL VARY ±3% DUE TO VARIATIONS IN MULTIPLE MOLDS & CONDITIONS PREVALENT DURING MANUFACTURE & USAGE.

STANDARD COVER, 24"/(8) BOLT MANWAY COVER/PE (SHOWN)
 STOCK NO. 3218 OR
 24"/STRAPPED MANWAY COVER/PE
 STOCK NO. 3217
 (OPTIONAL 24" COVERS AVAILABLE)

MOLDED-IN LADDER ATTACHMENT LUG TYP (2) PLACES

MOLDED-IN LIFTING LUG PAIRS (4) PLACES
 USE A MINIMUM OF (1) TAB AT EACH LOCATION FOR LIFTING (SEE DETAIL)

IMFD AVAILABLE IN 4" PIPE SIZE ONLY

SPLIT BACK-UP TAPERED

COMPANION FLG

GSKT 1/2-13 BOLTS

5/8" SQUARE BEVEL WASHER/BLACK PE

3"

1 3/4"

2'-11"

1'-11"

R2" TYP

RUNWAY DETAIL (2) PLACES