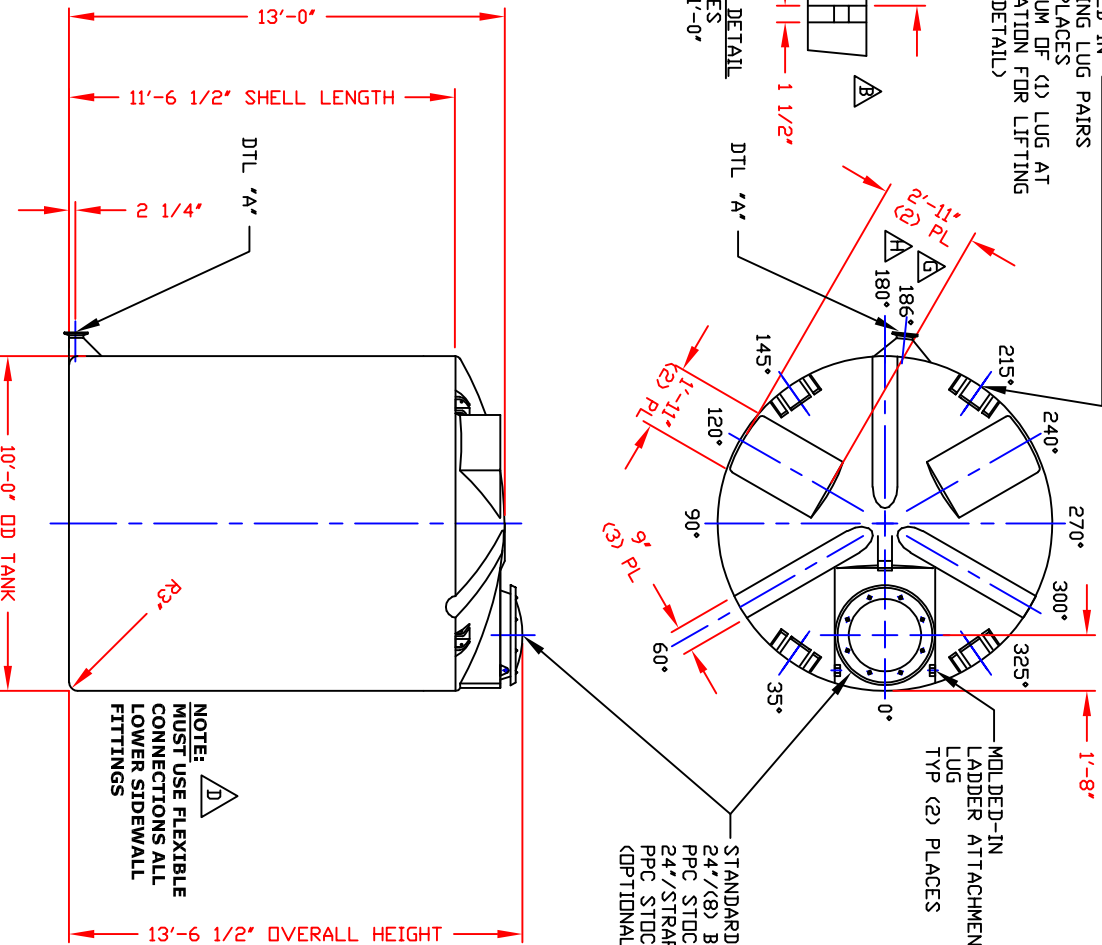
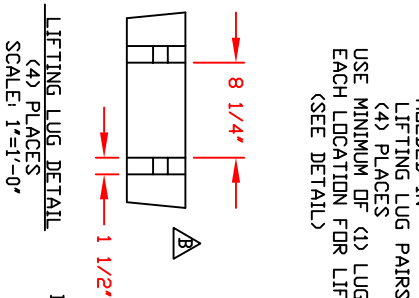


NON-CONTROLLED COPY
 INFORMATION SUBJECT TO CHANGE WITHOUT NOTICE
 VERIFY REV LEVEL OF PAPER COPY WITH REV LEVEL ON PPC WEB SITE

MOLDED-IN LIFTING LUG PAIRS (4) PLACES USE MINIMUM OF (1) LUG AT EACH LOCATION FOR LIFTING (SEE DETAIL)

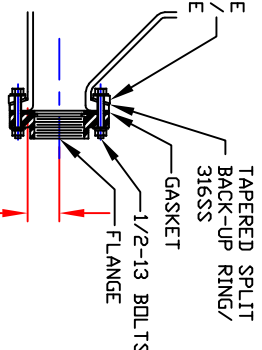


NOTE: MUST USE FLEXIBLE CONNECTIONS ALL LOWER SIDEWALL FITTINGS

STANDARD COVER: 24\"/>

MOLDED-IN LUG LADDER ATTACHMENT TYP (2) PLACES

DETAIL 'A' INTEGRALLY MOLDED FLANGED OUTLET AVAILABLE IN 4\"/>



- NOTES
1. THIS IS A COMPUTER GENERATED DWG. DO NOT REVISE BY HAND.
 2. DIMENSIONS WILL VARY ±3% DUE TO VARIATIONS IN MULTIPLE MOLDS & CONDITIONS PREVALENT DURING MANUFACTURE & USAGE.
 3. NO MOLDED IN GALLONAGE MARKERS THIS TANK.

CALCULATED CAPACITIES/ VOLUME IN U.S. GALLONS	DESIGN CAP	DOME VOL	TOTAL VOL
6628	265		6893

CONFIDENTIAL PROPERTY OF
 POLY PROCESSING COMPANY
 NOT FOR REPRINT OR USE
 WITHOUT PERMISSION

6600 GALLON IMFD TANK

DWG TITLE

SCALE: 1/4"=1'-0"

DATE: 09/25/19



Western Region
 1000 South 4th Street
 Cedar Rapids, IA 52402
 FAX (563) 386-0000

DR: B. HARPER

CK:

SHEET 1 OF 1 COMPUTER FILE

REV 1 IMFD-F-06600 H

- REV 'G' REVISED IMFD LOCATION BY:JJB 8/7/09 CK:MM
- REV 'F' REVISED FOR MOLD MODIFICATION BY:JJB 6/16/05 CK:MM
- REV 'E' REVISED IMFD STYLE BY:JJB 4/30/03 CK:MM
- REV 'D' ADDED FITTING NOTE BY:JJB 2/27/03 CK:MMB
- REV 'C' REVISED STOCK NUMBER BY:JJB 2/27/03 CK:MMB
- REV 'B' ADDED LIFTING LUGS & DETAIL BY:JJB 10/31/02 CK:MM
- REV 'A' ADDED DIMENSION BY:JJB 10/21/02 CK:MMB

REV 'H' REVISED IMFD LOCATION BY:JJB 5/23/16 CK:MM