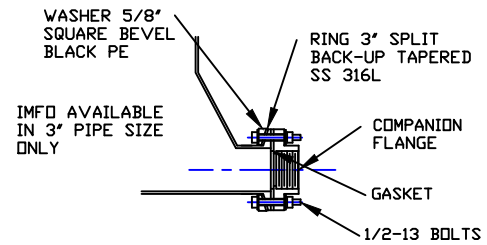
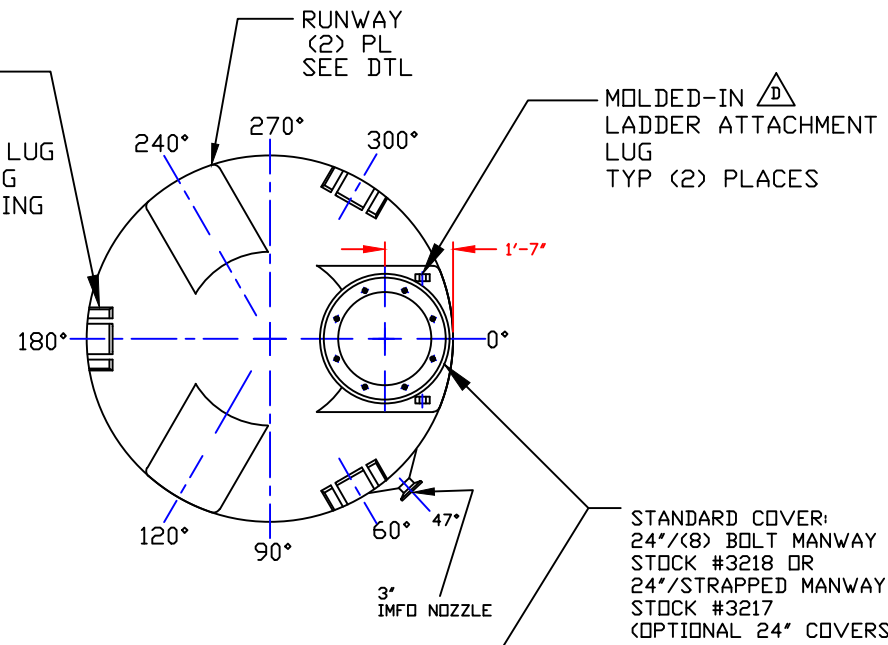
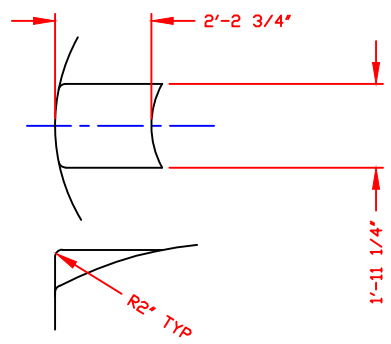


NOZZLE SCHEDULE & ACCESSORIES					
SERVICE	MK	STOCK NO./SIZE	FITTING	DEG	ELEV

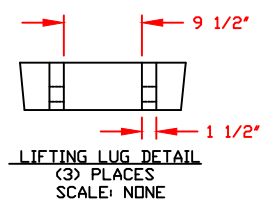
MOLDED-IN LIFTING LUG PAIRS (3) PLACES
 USE MINIMUM OF (3) LUG PAIRS @ ALTERNATING LOCATIONS FOR LIFTING (SEE DETAIL)



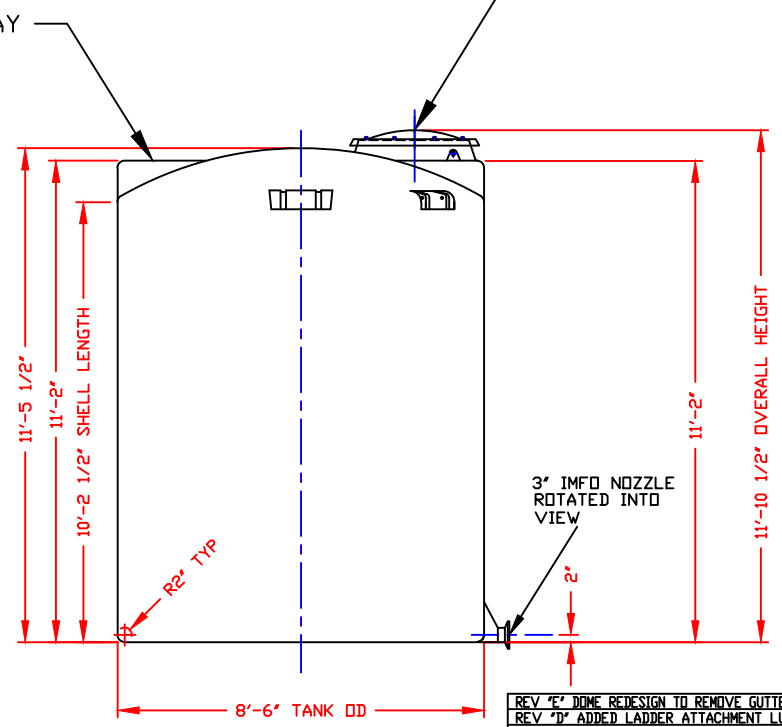
IMFO NOZZLE DETAIL
 (INTEGRALLY MOLDED FLANGED OUTLET)
 SCALE: NONE



RUNWAY DETAIL
 (2) PLACES



LIFTING LUG DETAIL
 (3) PLACES
 SCALE: NONE



- NOTES**
1. THIS IS A COMPUTER GENERATED DWG. DO NOT REVISE BY HAND.
 2. DIMENSIONS WILL VARY ±3% DUE TO VARIATIONS IN MULTIPLE MOLDS & CONDITIONS PREVALENT DURING MANUFACTURE & USAGE.
 3. NO MOLDED IN GALLONAGE MARKERS THIS TANK.

CALCULATED CAPACITIES/ VOLUME IN U.S. GALLONS		
DESIGN CAP	DOME VOL	TOTAL VOL
4162	245	4407

CONFIDENTIAL PROPERTY OF
 POLY PROCESSING COMPANY
 NOT FOR REPRINT OR USE
 WITHOUT PERMISSION

NOTE:
 MUST USE FLEXIBLE CONNECTIONS ALL LOWER SIDEWALL FITTINGS

REV "E" DOME REDESIGN TO REMOVE GUTTERS/ADD RUNWAYS BY: JCB 8/30/24
REV "D" ADDED LADDER ATTACHMENT LUGS BY: JCB 7/8/04 CK:W/M
REV "C" ADDED FITTING NOTE BY: MBW 2/17/03 CK: JB
REV "B" ADDED LIFTING LUGS & DETAIL BY: JCB 1/16/03 CK: W/M
REV "A" ADDED DIMENSION BY: JCB 10/18/02 CK: MBW

DWG TITLE			
4150 GALLON IMFO TANK			
SCALE: 3/8"=1'-0"		DR: B. HARPER	REV: F
DATE: 11/12/2024		CK:	
SHEET 1 OF 1		COMPUTER FILE	IMFO-F-04150