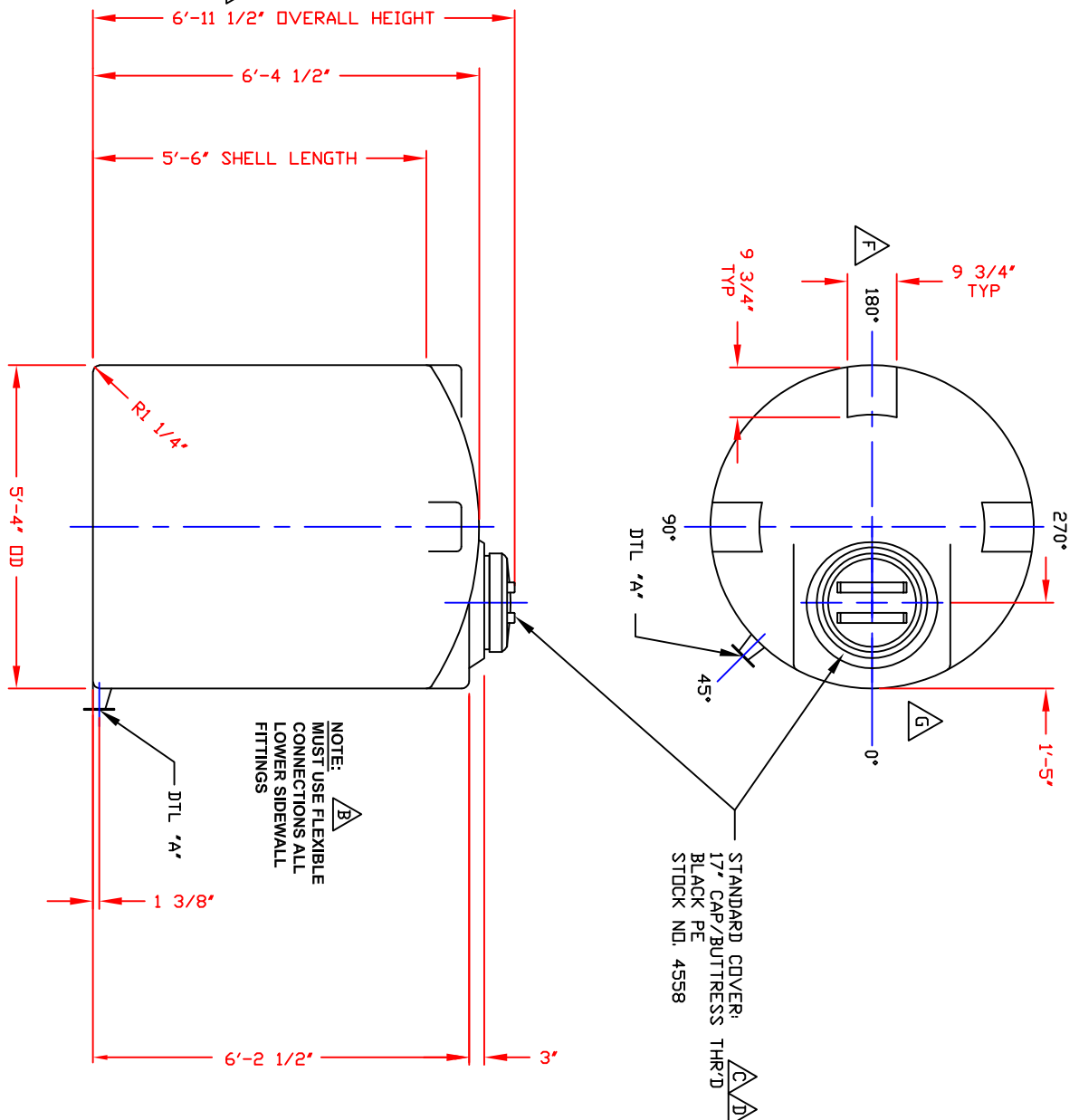


NON-CONTROLLED COPY  
 INFORMATION SUBJECT TO CHANGE WITHOUT NOTICE  
 VERIFY REV LEVEL OF PAPER COPY WITH REV LEVEL ON PPC WEB SITE



NOZZLE SCHEDULE & ACCESSORIES			
SERVICE	MK STOCK NO	SIZE	DEG ELEV

REV 'G'	REVISED MWY CASTLE CONFIGURATION BY:JBI 8/12/13 CK:MM	REV 'D'	REVISED COVER BY:JB 7/27/09 CK:MM
REV 'F'	ADDED FTG FLATS TO DOME BY:JB 12/5/12 CK:MM	REV 'C'	REVISED LID BY:MBW 3/3/03 CK:JB
REV 'E'	REVISED MANWAY CONFIGURATION BY:JB 1/6/11 CK:MM	REV 'B'	ADDED FITTING NOTE BY:MBW 3/3/03 CK:JB
		REV 'A'	ADDED DIMENSION BY:JB 10/15/02 CK:MBW

DWG TITLE: 905 GALLON IMFD TANK

SCALE: 1/2"=1'-0"

DATE: 09/18/19

POLY PROCESSING SOLUTIONS, SUPERLITE

DR: B. HARPER

SHEET 1 OF 1 IMFD-F-00905

REV G

NOTES

1. THIS IS A COMPUTER GENERATED DWG. DO NOT REVISE BY HAND.
2. DIMENSIONS WILL VARY ±3% DUE TO VARIATIONS IN MULTIPLE MOLDS & CONDITIONS PREVALENT DURING MANUFACTURE & USAGE.
3. 4" WIDE MOLDED IN GALLONAGE MARKERS @ APPROX 12" IN 100 GAL INCREMENTS UP TO 900 GALLON.

CALCULATED CAPACITIES/  
 VOL/UME IN U.S. GALLONS/  
 DESIGN CAP/DOME VOL/TOTAL VOL  
 907 61 968

TO BE USED WITH SPLIT BACK-UP RING & COMPANION FLG--AVAILABLE IN 2" SIZE ONLY

DETAIL 'A'  
 (INTEGRALLY MOLDED FLANGED OUTLET)  
 SCALE: 1 1/2"=1'-0"

1 3/4"  
 4"  
 1 3/8"

CONFIDENTIAL PROPERTY OF POLY PROCESSING COMPANY NOT FOR REPRINT OR USE WITHOUT PERMISSION