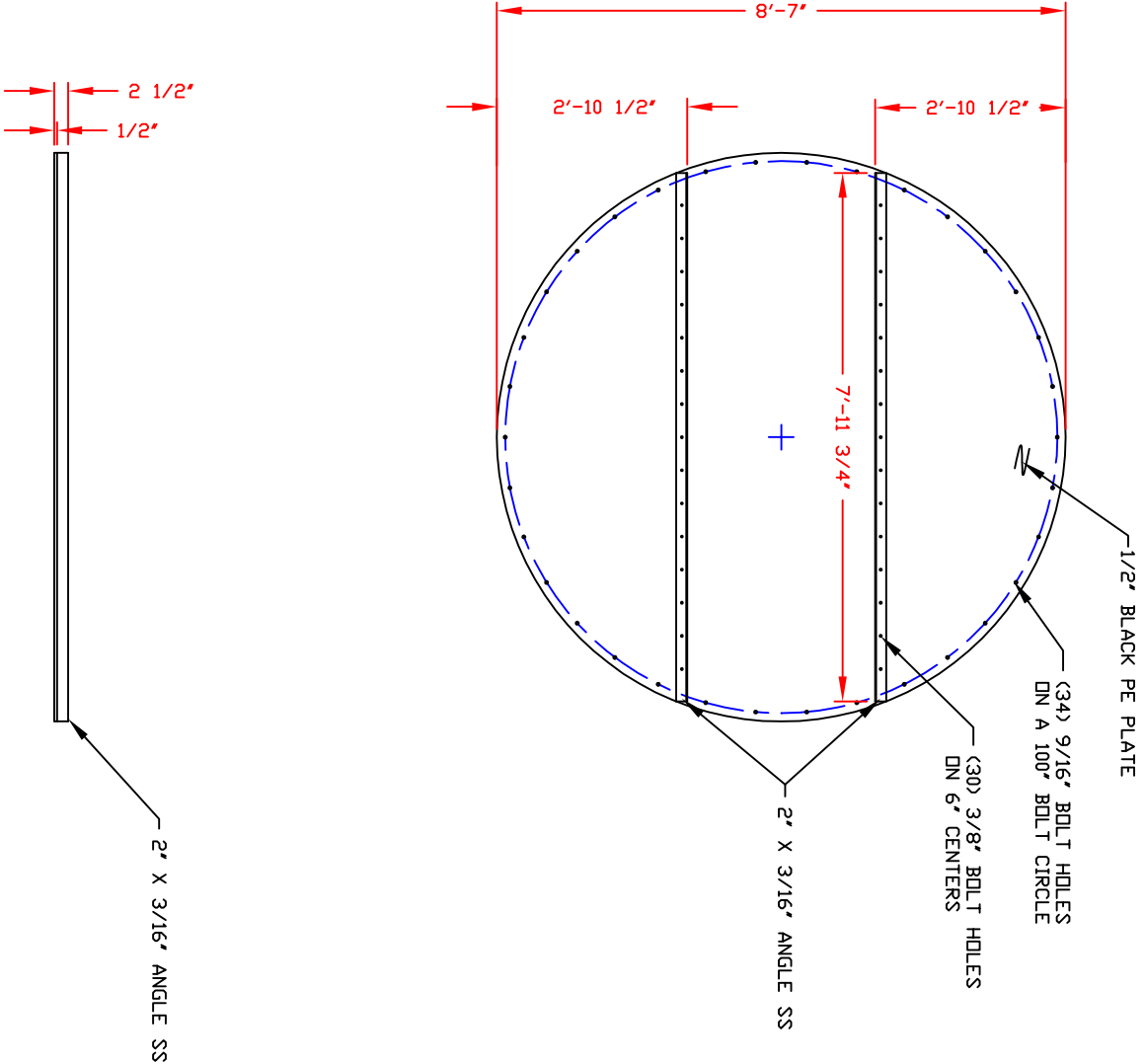


### BILL OF MATERIALS

NO.	DESCRIPTION	DESCRIPTION 2	UNITS	QUANTITY
8853	PLATE 103" DIA. F/O/T	1/2" PE	EA	1
8884	BRACING 2" X 2" X 3/16" ANGLE	SS W- 3/8" DIA BH ON 6" CTRS.	IN	192
8335	BOLT 1/2" X 2 1/8"	FLT HD SLOTTED BLK PE	EA	34
9245	WASHER 1/4" FLAT	SS	EA	60
9246	WASHER 1/4" LOCK	SS	EA	30
9247	NUT 1/4"-20 HEX	SS	EA	30
9248	BOLT 1/4-20 X 2" HEX HD	SS	EA	30
8877	GSKT 103" OD X 87" ID	3/8" PE	EA	1



**DWG TITLE**  
103 IN. OPEN TOP LID

**SCALE:** 1/2"=1'-0"

**DATE:** 8/27/2007

**DR:** B. DUMAS

**CK:** XXXXXXXXX

**SHEET:** 1 OF 1

**COMPUTER FILE:** 9385

**REV:** -

**Central Region  
Poly Processing  
1000 340-7400  
Fax: 340-240-0795**

**CONFIDENTIAL PROPERTY OF  
POLY PROCESSING COMPANY  
NOT FOR REPRINT OR USE  
WITHOUT PERMISSION**

