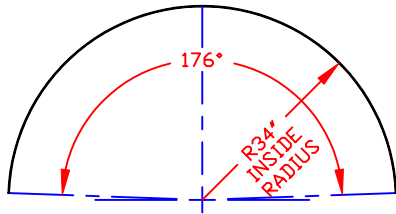


NOTES

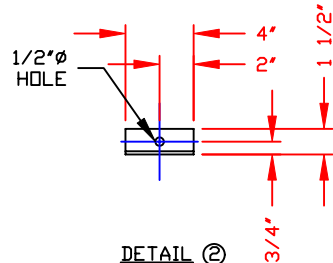
1. THIS IS A COMPUTER GENERATED DWG. DO NOT REVISE BY HAND.

CONFIDENTIAL PROPERTY OF
POLY PROCESSING COMPANY
NOT FOR REPRINT OR USE
WITHOUT PERMISSION

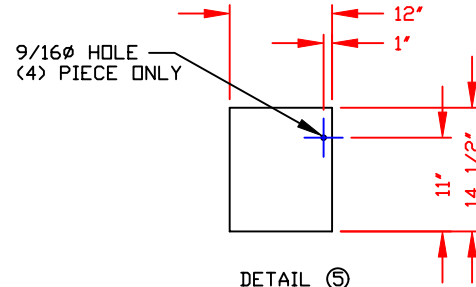
DWG TITLE			
1950 GALLON INSULATED HORIZONTAL TANK SKID			
SCALE:	1/2"=1'-0"		DR: MB WILKERSON
DATE:	11/16/00		CK: J. BRANTLEY
		Central Region P.O. Box 4150 (71211) 2201 Old Sterlington Rd. Morgan, LA 71253 C310 343-7565 FAX C310 343-0795	SHEET
			COMPUTER FILE
			REV
		1 OF 3	M4978 -



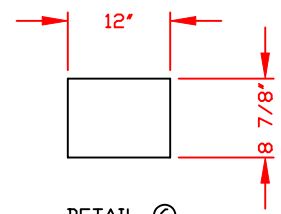
DETAIL ①
 1/8" THK X 4" FLAT BAR
 ROLL TO 68" ID
 ARC LENGTH 105'
 (4) REQ'D



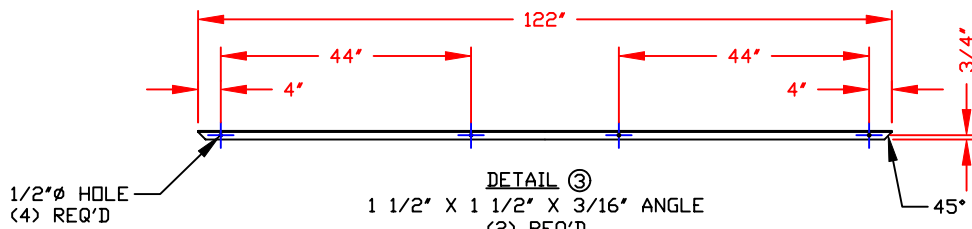
DETAIL ②
 1 1/2" X 1 1/2" X 3/16" ANGLE
 (8) REQ'D
 SCALE: NONE



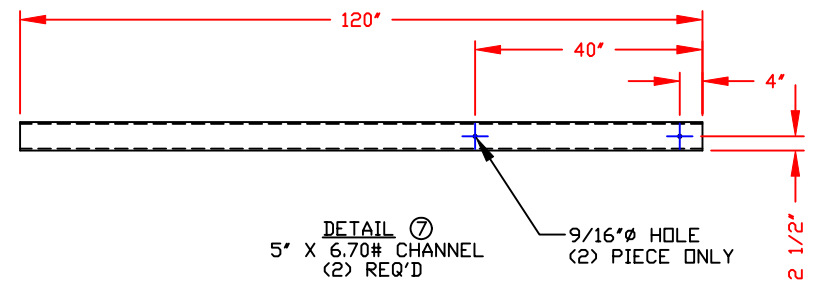
DETAIL ⑤
 3/16" THK X 12" FB
 (8) REQ'D
 (4) W/HOLES
 SCALE: NONE



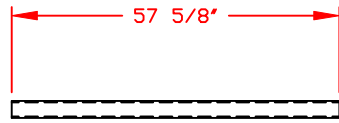
DETAIL ⑥
 1/8" THK X 12" FB
 (8) REQ'D
 SCALE: NONE



DETAIL ③
 1 1/2" X 1 1/2" X 3/16" ANGLE
 (2) REQ'D



DETAIL ⑦
 5" X 6.70# CHANNEL
 (2) REQ'D



DETAIL ⑧
 3" X 4.10# CHANNEL
 (4) REQ'D

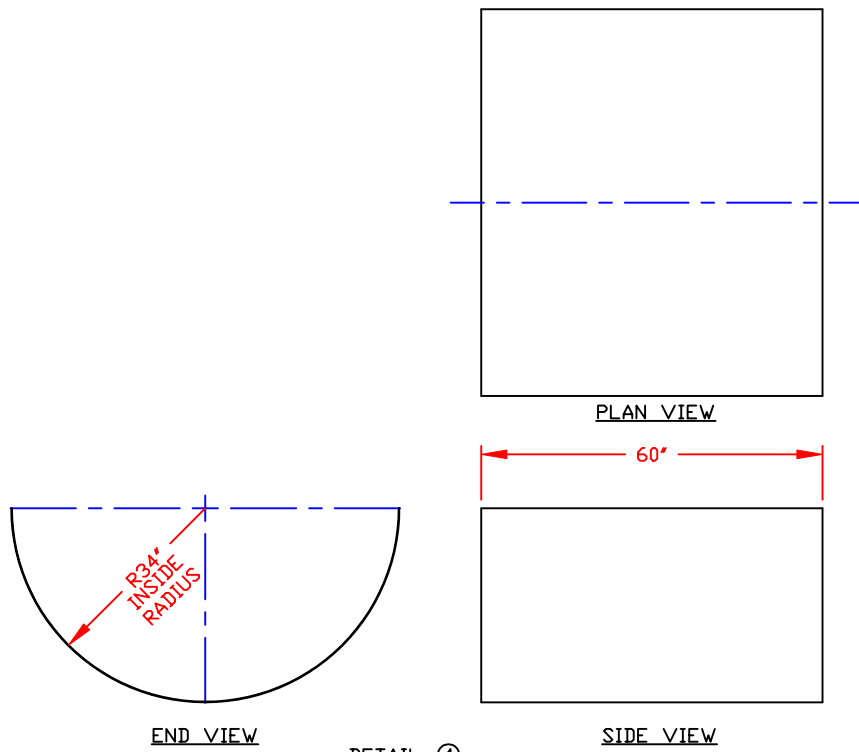
3/8-16 x 5" LG ALL TH'D BOLT - ZINC COATED
 W/(2) FLAT WASHERS
 W/(1) LOCK WASHER
 W/(1) 3/8-16 NUT

DETAIL ⑨
 (8) REQ'D

NOTES
 1. THIS IS A COMPUTER GENERATED DWG. DO NOT REVISE BY HAND.

CONFIDENTIAL PROPERTY OF
 POLY PROCESSING COMPANY
 NOT FOR REPRINT OR USE
 WITHOUT PERMISSION

DWG TITLE 1950 GALLON INSULATED HORIZONTAL TANK SKID			
SCALE: 1/2"=1'-0"		Central Region P.O. Box 4150 (71211) 2201 Old Sterlington Rd. Monroe, LA 71203 C180 345-7565 FAX C180 345-8795	DR: MB WILKERSON
DATE: 11/16/00		CK: J. BRANTLEY	
SHEET 2 OF 3		COMPUTER FILE M4978	REV -



DETAIL ④
 1/8" THK PLATE
 ROLL TO 68" ID
 ARC LENGTH 107"
 (1) REQ'D

CONFIDENTIAL PROPERTY OF
 POLY PROCESSING COMPANY
 NOT FOR REPRINT OR USE
 WITHOUT PERMISSION

NOTES
 1. THIS IS A COMPUTER GENERATED DWG. DO NOT REVISE BY HAND.

DWG TITLE			
1950 GALLON INSULATED HORIZONTAL TANK SKID			
SCALE:	1/2"=1'-0"		DR: MB WILKERSON
DATE:	11/16/00		CK: J. BRANTLEY
		SHEET	COMPUTER FILE
		3 OF 3	M4978
			REV
			-

Central Region
 P.O. Box 4150 71211
 2201 Old Sterlington Rd.
 Monroe, LA 71203
 C180 343-7565
 FAX C180 343-8795