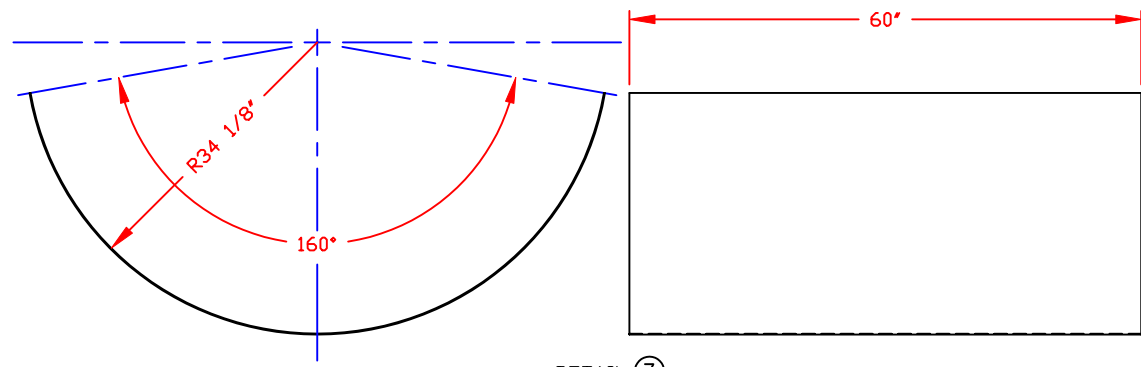
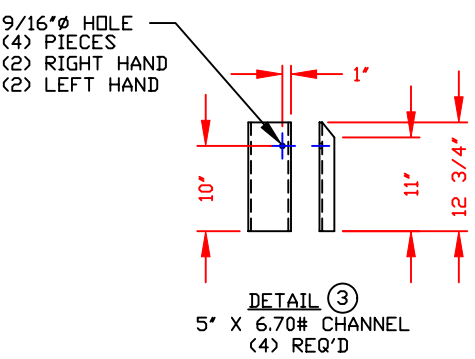
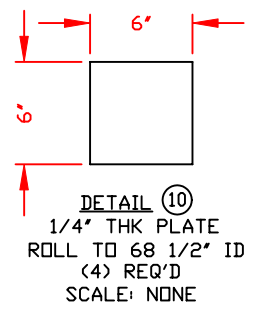
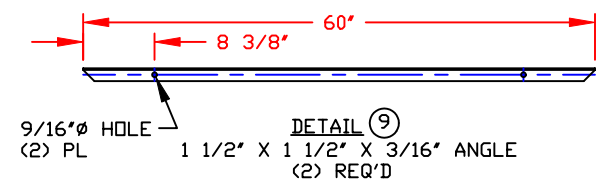
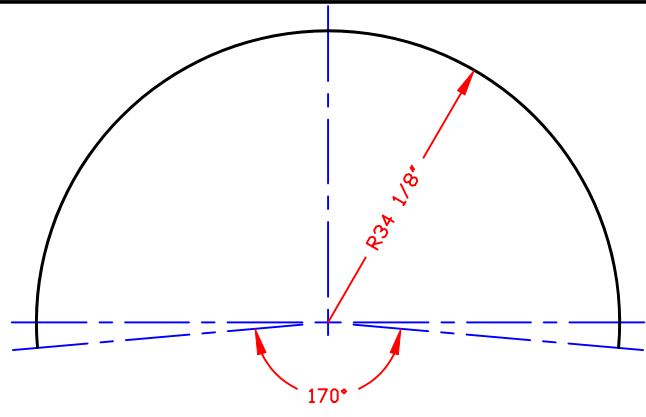
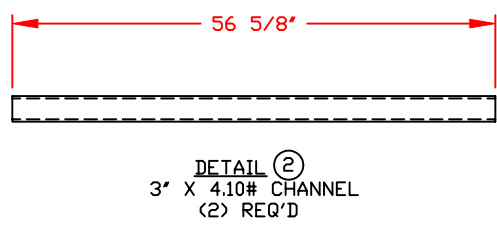
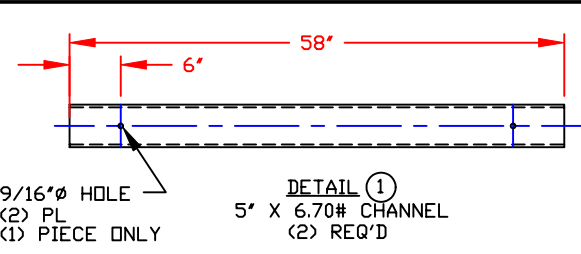


NOTES

1. THIS IS A COMPUTER GENERATED DWG. DO NOT REVISE BY HAND.

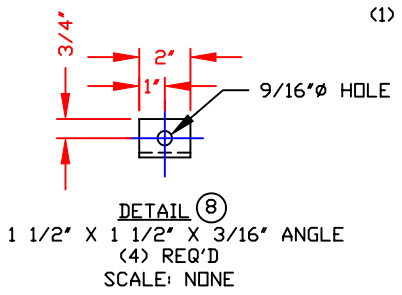
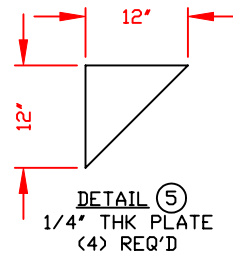
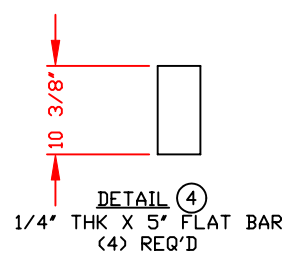
CONFIDENTIAL PROPERTY OF
POLY PROCESSING COMPANY
NOT FOR REPRINT OR USE
WITHOUT PERMISSION

DWG TITLE 1000 GALLON INSULATED HORIZONTAL TANK SKID			DR: M WILKERSON	
SCALE: 3/4"=12'		Central Region P.O. Box 4150 71211 2201 Old Sterlington Rd. Monroe, LA 71203 C310 343-7565 FAX C310 343-0795		CK: J. BRANTLEY
DATE: 5/7/01		SHEET 1 OF 2	COMPUTER FILE M4966	REV -



3/8-16 x 6" LG ALL TH'D BOLT
ZINC COATED
W/(2) FLAT WASHERS
W/(1) LOCK WASHER
W/(1) 3/8-16 NUT

DETAIL ⑪
(4) REQ'D



NOTES
1. THIS IS A COMPUTER GENERATED DWG. DO NOT REVISE BY HAND.

CONFIDENTIAL PROPERTY OF
POLY PROCESSING COMPANY
NOT FOR REPRINT OR USE
WITHOUT PERMISSION

DWG TITLE 1000 GALLON INSULATED HORIZONTAL TANK SKID		
SCALE: 3/4"=1'-0"		DR: M WILKERSON
DATE: 5/7/01		CK: J. BRANTLEY
SHEET 2 OF 2		COMPUTER FILE M4966
		REV -