

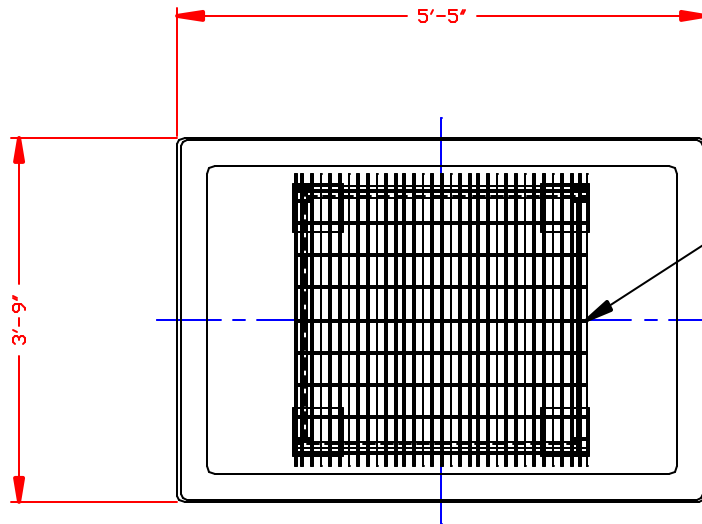
NON-CONTROLLED COPY

INFORMATION SUBJECT TO CHANGE WITHOUT NOTICE

COPY WILL NOT BE UPDATED

COPY ISSUED BY.....

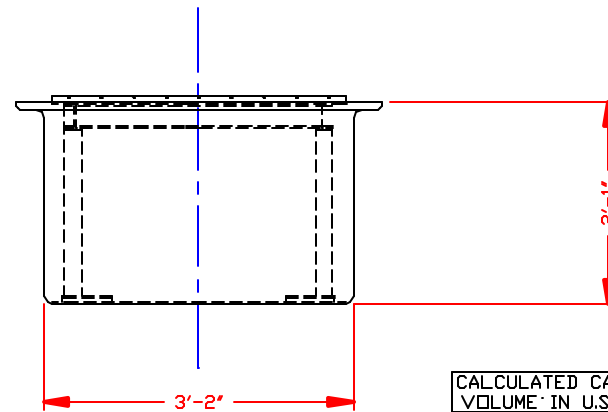
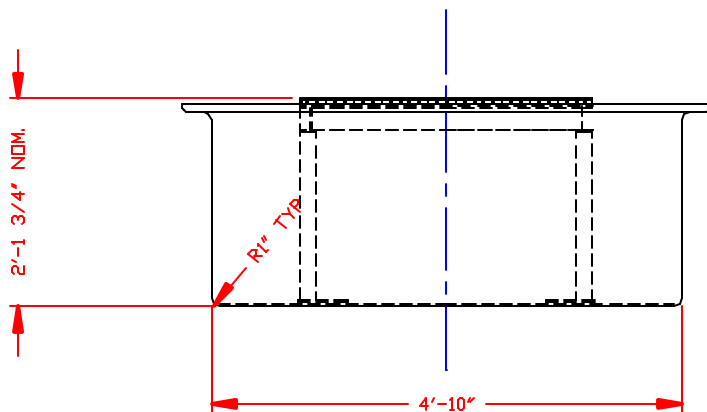
COPY ISSUED ON.....



36" SQUARE STEEL STAND
STOCK NO. 3450

NOZZLE SCHEDULE & ACCESSORIES						
SERVICE	MK	STOCK NO.	SIZE	FITTING	DEG	ELEV

- NOTES
1. THIS IS A COMPUTER GENERATED DWG. DO NOT REVISE BY HAND.
 2. DIMENSIONS WILL VARY ±3% DUE TO VARIATIONS IN MULTIPLE MOLDS & CONDITIONS PREVALENT DURING MANUFACTURE & USAGE.
 3. FOR DETAILS OF 225 GALLON RECTANGULAR SECONDARY CONTAINMENT SEE COMPUTER FILE NO. 5100225. FOR DETAILS OF 36" SQUARE STEEL STAND SEE COMPUTER FILE NO. M3450.



CALCULATED CAPACITIES/ VOLUME IN U.S. GALLONS
DESIGN CAPACITY
225

CONFIDENTIAL PROPERTY OF
POLY PROCESSING COMPANY
NOT FOR REPRINT OR USE
WITHOUT PERMISSION

NOTES: CAPACITIES OF RECTANGULAR SECONDARY CONTAINMENT BASINS MAY BE SIGNIFICANTLY LESS THAN NOMINAL VOLUME WITHOUT ADEQUATE EXTERNAL SUPPORT.

DWG TITLE			
225 GALLON RECTANGULAR SECONDARY CONTAINMENT WITH 36" SQUARE STAND			
SCALE:	3/4"=1'-0"	POLY PROCESSING	DR: MB WILKERSON
DATE:	1/4/99		CHK: D. RECTOR
SHEET		COMPUTER FILE	REV
1 OF 1		5100225S	-