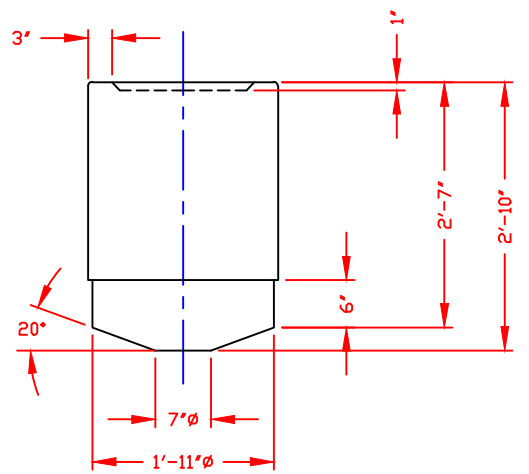
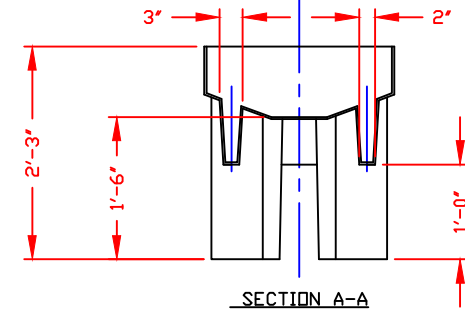
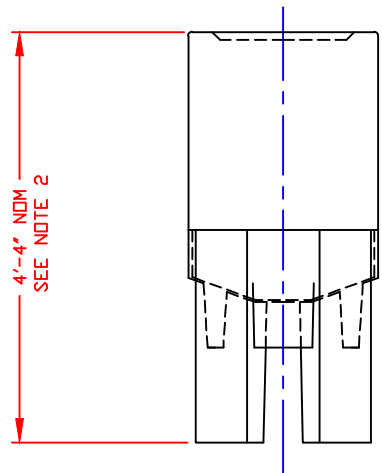
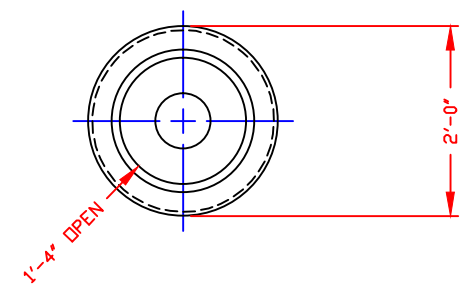
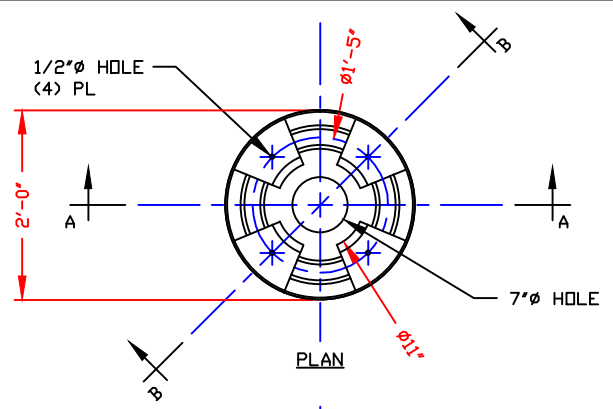
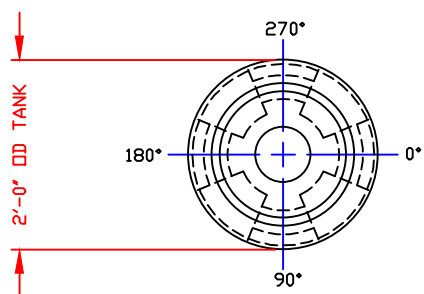
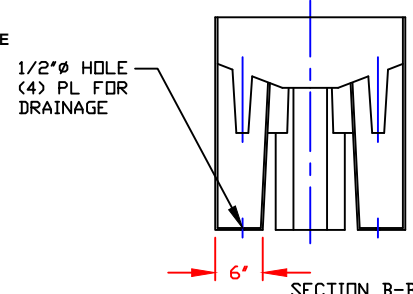


NON-CONTROLLED COPY
 INFORMATION SUBJECT TO CHANGE WITHOUT NOTICE
 VERIFY REV LEVEL OF PAPER COPY WITH REV LEVEL ON PPC WEB SITE



NOTE:
 MUST USE FLEXIBLE CONNECTIONS ALL LOWER SIDEWALL FITTINGS



TANK AND STAND ASSEMBLY

STAND DETAILS

CALCULATED CAPACITIES/ VOLUME IN U.S. GALLONS
DESIGN CAPACITY
57

CONFIDENTIAL PROPERTY OF
 POLY PROCESSING COMPANY
 NOT FOR REPRINT OR USE
 WITHOUT PERMISSION

- NOTES**
- THIS IS A COMPUTER GENERATED DWG. DO NOT REVISE BY HAND.
 - DIMENSIONS WILL VARY ±3% DUE TO VARIATIONS IN MULTIPLE MOLDS & CONDITIONS PREVALENT DURING MANUFACTURE & USAGE. TANK MAY SETTLE INTO STAND CAUSING VARIATIONS IN OVERALL HEIGHT DIMENSION.
 - NO GALLONAGE MARKERS THIS TANK.

DWG TITLE 55 GAL OPEN TOP 20° ALL PLASTIC CONE TANK W/STAND		Central Region P.O. Box 4589 (75283) 28M, Old Springington Rd. Newport, LA 71265 CEN 343-7825 FAX (504) 343-9795		DR: MB WILKERSON
SCALE: 3/4"=1'-0"	DATE: 2/3/00	POLYPROCESSING SOLUTIONS. SIMPLIFIED.		CK: D. RECTOR
SHEET 1 OF 1		COMPUTER FILE 4300055	REV A	

REV "A" ADDED FITTING NOTE BY:JB 11/7/03 CK:MBW