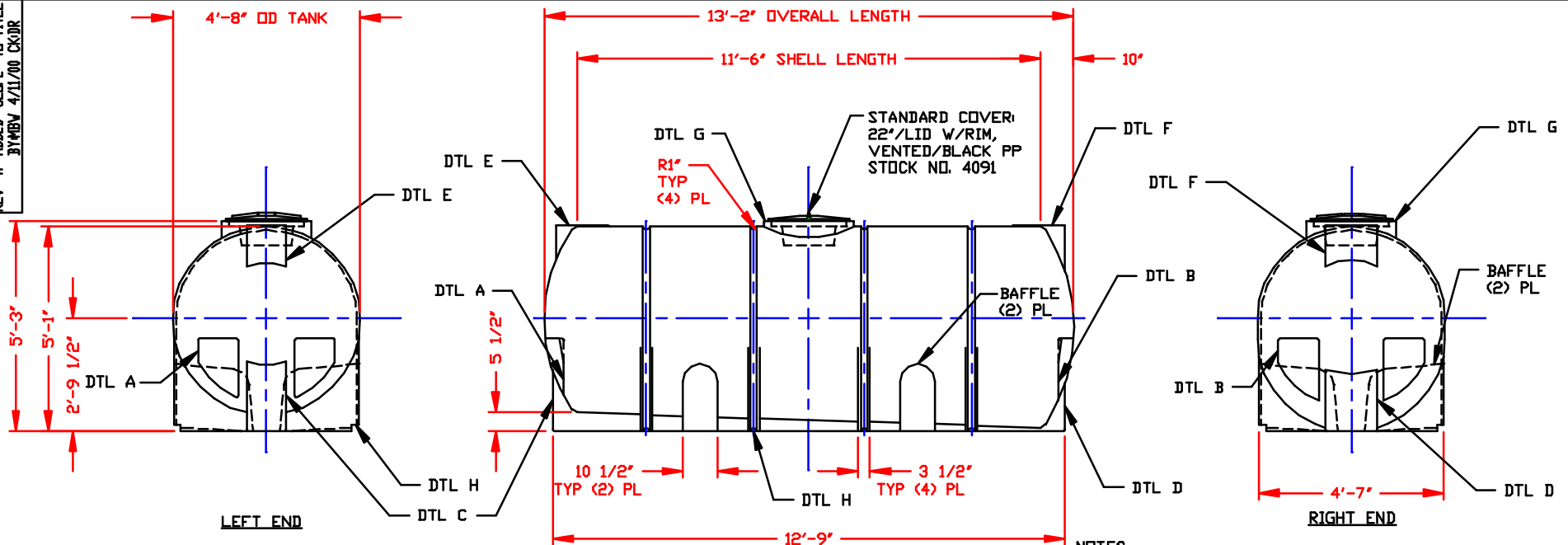


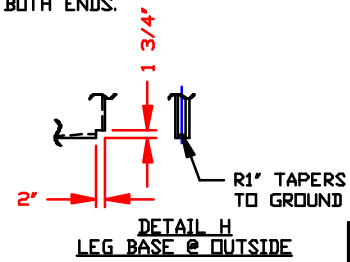
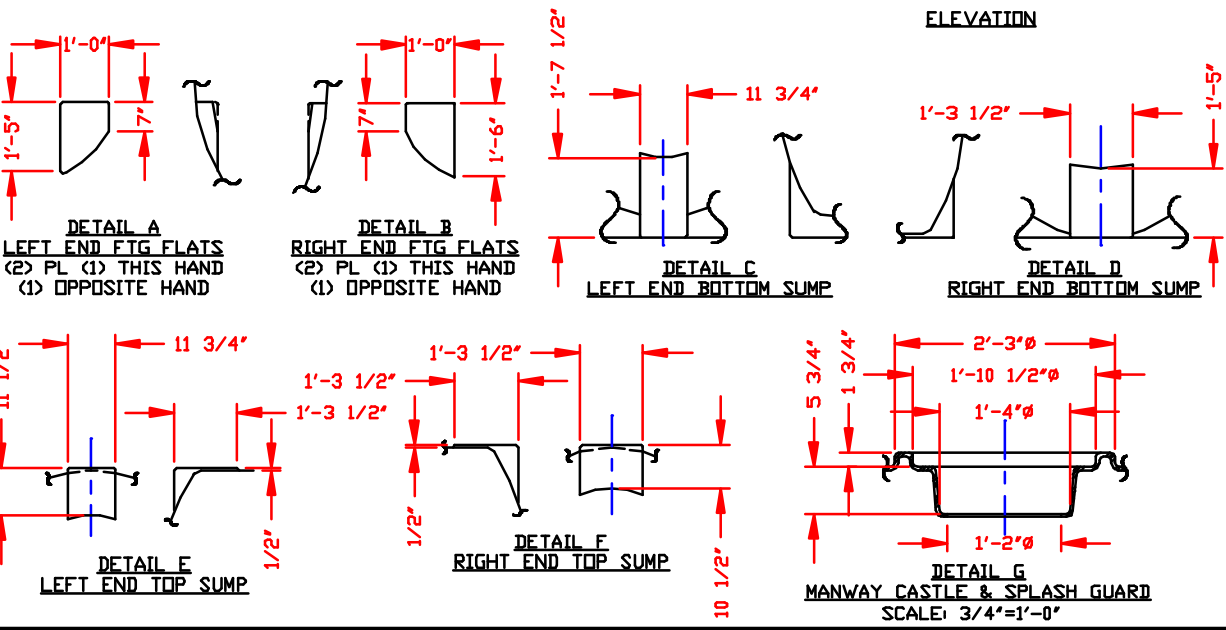
| | |
|--|--|
| NON-CONTROLLED COPY INFORMATION SUBJECT TO CHANGE WITHOUT NOTICE COPY WILL NOT BE UPDATED | COPY ISSUED BY..... COPY ISSUED ON..... |
|--|--|

REV 'A' ADDED 'SLOPE' TO TITLE BY MBW 4/11/00 CKDR



NOTES

1. THIS IS A COMPUTER GENERATED DWG. DO NOT REVISE BY HAND.
2. DIMENSIONS WILL VARY ±3% DUE TO VARIATIONS IN MULTIPLE MOLDS & CONDITIONS PREVALENT DURING MANUFACTURE & USAGE.
3. MOLDED IN GALLONAGE MARKERS IN 100 GALLON INCREMENTS UP TO 1600 GALLONS, WITH TIC MARKS EVERY 50 GALLON ON BOTH ENDS.



| | |
|--|------|
| CALCULATED CAPACITIES/ VOLUME IN U.S. GALLONS | |
| DESIGN CAPACITY | 1600 |

CONFIDENTIAL PROPERTY OF
POLY PROCESSING COMPANY
NOT FOR REPRINT OR USE
WITHOUT PERMISSION

| | | | | |
|---|--|---|---------------|------------------|
| DWG TITLE A 1600 GALLON HORIZONTAL SLOPE LEG TANK | | General Notes PLS. SEE 2000 0000 2000 0000 2000 0000 2000 0000 2000 0000 | | DR: MB WILKERSON |
| SCALE: 3/8"=1'-0" | | DATE: 2/10/00 | CK: D. RECTOR | |
| SHEET 1 OF 1 | | COMPUTER FILE 3401600 | REV A | |