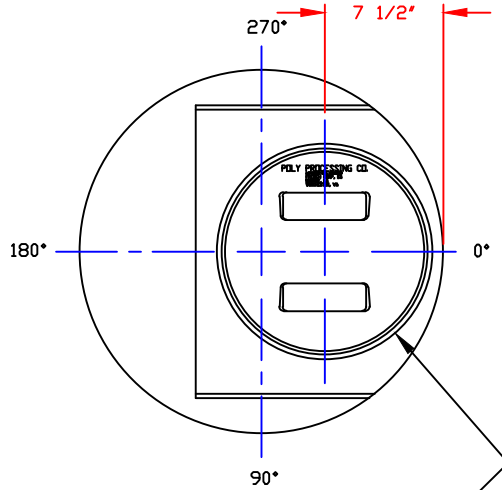
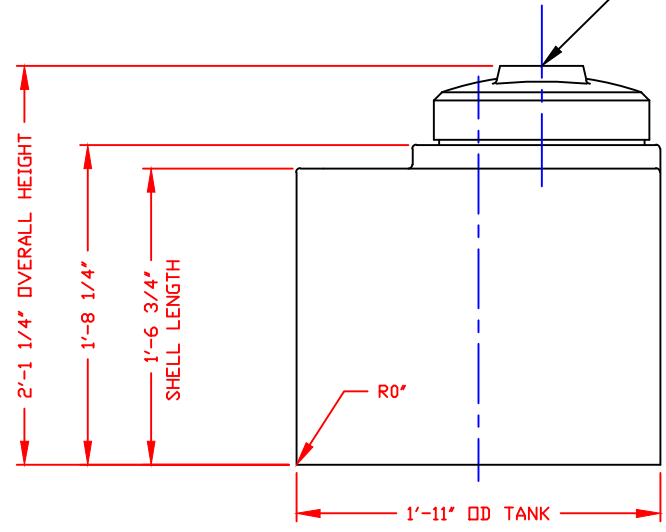


NON-CONTROLLED COPY
 INFORMATION SUBJECT TO CHANGE WITHOUT NOTICE
 VERIFY REV LEVEL OF PAPER COPY WITH REV LEVEL ON PPC WEB SITE

| NOZZLE SCHEDULE & ACCESSORIES | | | | | |
|-------------------------------|----|-----------|------|---------|----------|
| SERVICE | MK | STOCK NO. | SIZE | FITTING | DEG ELEV |
| | | | | | |
| | | | | | |
| | | | | | |
| | | | | | |
| | | | | | |
| | | | | | |
| | | | | | |
| | | | | | |
| | | | | | |
| | | | | | |



STANDARD COVER:
 12"/BUTTRESS THREAD
 CAP/BLACK PE
 STOCK NO. 5167



NOTE: MUST USE FLEXIBLE CONNECTIONS ALL LOWER SIDEWALL FITTINGS

- NOTES**
- THIS IS A COMPUTER GENERATED DWG. DO NOT REVISE BY HAND.
 - DIMENSIONS WILL VARY ±3% DUE TO VARIATIONS IN MULTIPLE MOLDS AND CONDITIONS PREVALENT DURING MANUFACTURE & USAGE.
 - NO MOLDED IN GALLONAGE MARKERS THIS TANK.

| CALCULATED CAPACITIES/ VOLUME IN U.S. GALLONS | |
|--|-----------|
| DESIGN CAP | TOTAL VOL |
| 33 | 36 |

CONFIDENTIAL PROPERTY OF
 PDLY PROCESSING COMPANY
 NOT FOR REPRINT OR USE
 WITHOUT PERMISSION

| | | | |
|------------------------|--------------|---|-----------------|
| DWG TITLE | | | |
| 30 GALLON UPRIGHT TANK | | | |
| SCALE: | 1 1/2"=1'-0" | Western Region P.O. Box 88 8025 South Ash Street French Camp, CA 95821 (925) 982-0925 FAX (925) 982-0425 | DR: D. RECTOR |
| DATE: | 2-18-00 | | CK: J. BRANTLEY |
| | | SHEET | COMPUTER FILE |
| | | 1 OF 1 | 11000030 |
| | | | REV |
| | | | A |

REV "A" ADDED FITTING NOTE BY:JB 3/19/03 CK:MBW

REV