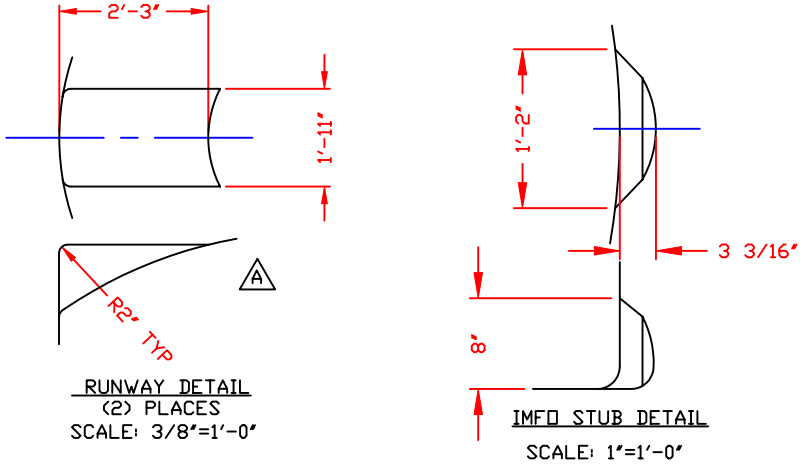
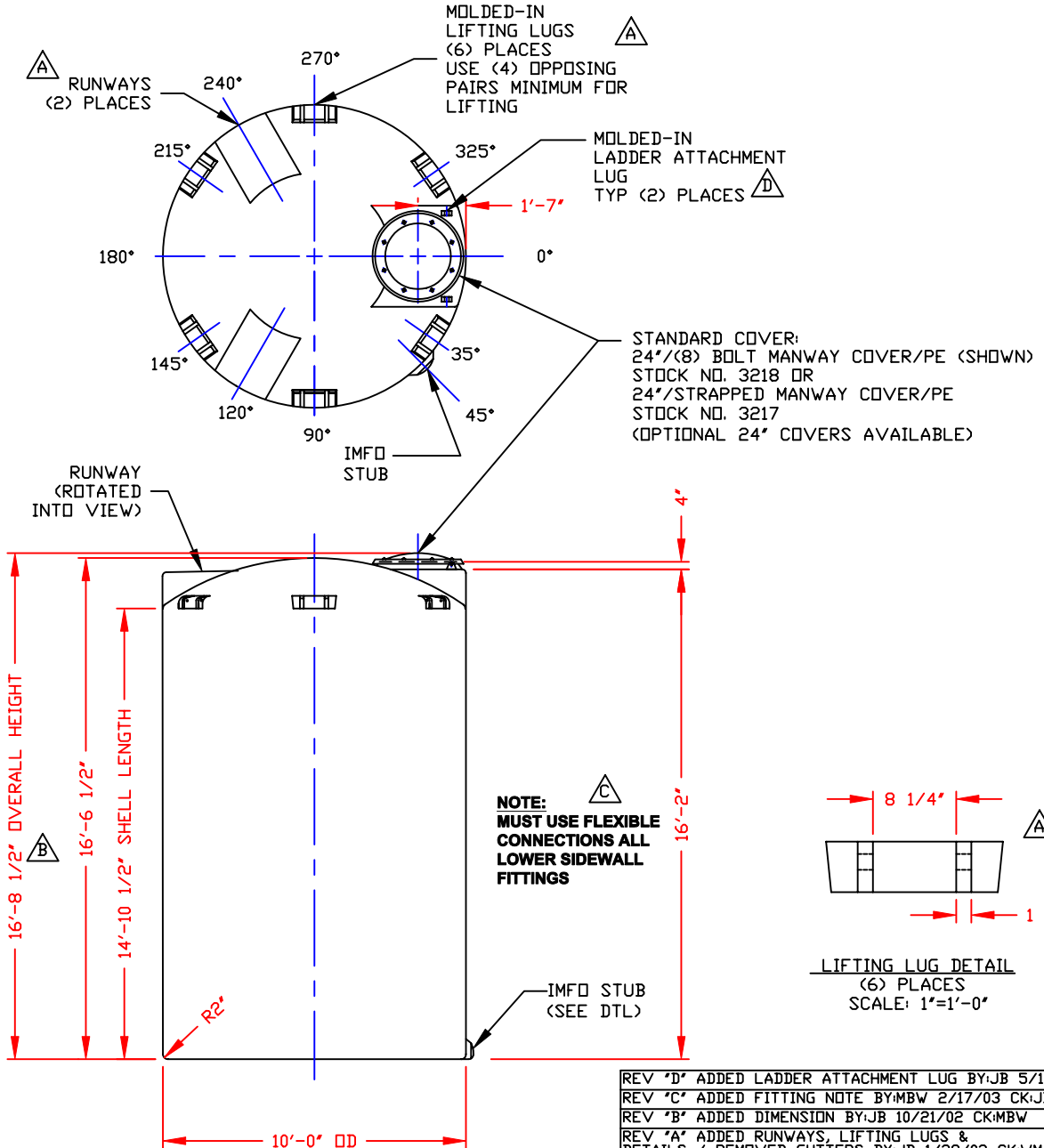


NON-CONTROLLED COPY  
 INFORMATION SUBJECT TO CHANGE WITHOUT NOTICE  
 VERIFY REV LEVEL OF PAPER COPY WITH REV LEVEL ON PPC WEB SITE

NOZZLE SCHEDULE & ACCESSORIES					
SERVICE	MK	STOCK NO.	SIZE	FITTING	DEG ELEV



- NOTES**
- THIS IS A COMPUTER GENERATED DWG. DO NOT REVISE BY HAND
  - DIMENSIONS WILL VARY ±3% DUE TO VARIATIONS IN MULTIPLE MOLDS & CONDITIONS PREVALENT DURING MANUFACTURE & USAGE.
  - MOULDED IN GALLONAGE MARKERS @ APPROX 54" IN 200 GAL INCREMENTS UP TO 8200 GAL.

DESIGN CAP	DOME VOL	TOTAL VOL
8512	399	8911

CONFIDENTIAL PROPERTY OF  
 POLY PROCESSING COMPANY  
 NOT FOR REPRINT OR USE  
 WITHOUT PERMISSION

DWG TITLE		<b>8500 GALLON UPRIGHT TANK</b>	
SCALE: 1/4"=1'-0"	<b>POLY PROCESSING Company</b>	Central Region P.O. Box 4150 (7121) 2201 Old Stoneington Rd. Morrow, LA 71260 504-343-7265 FAX 504-343-0795	DR: MB WILKERSON CK: J. BRANTLEY
DATE: 10/8/99		SHEET 1 OF 1	COMPUTER FILE 1008500
REV 'D' ADDED LADDER ATTACHMENT LUG BY:JB 5/14/04 CK:WM		REV	
REV 'C' ADDED FITTING NOTE BY:MBW 2/17/03 CK:JB		1008500	
REV 'B' ADDED DIMENSION BY:JB 10/21/02 CK:MBW		D	
REV 'A' ADDED RUNWAYS, LIFTING LUGS & DETAILS / REMOVED GUTTERS BY:JB 1/28/02 CK:WM			