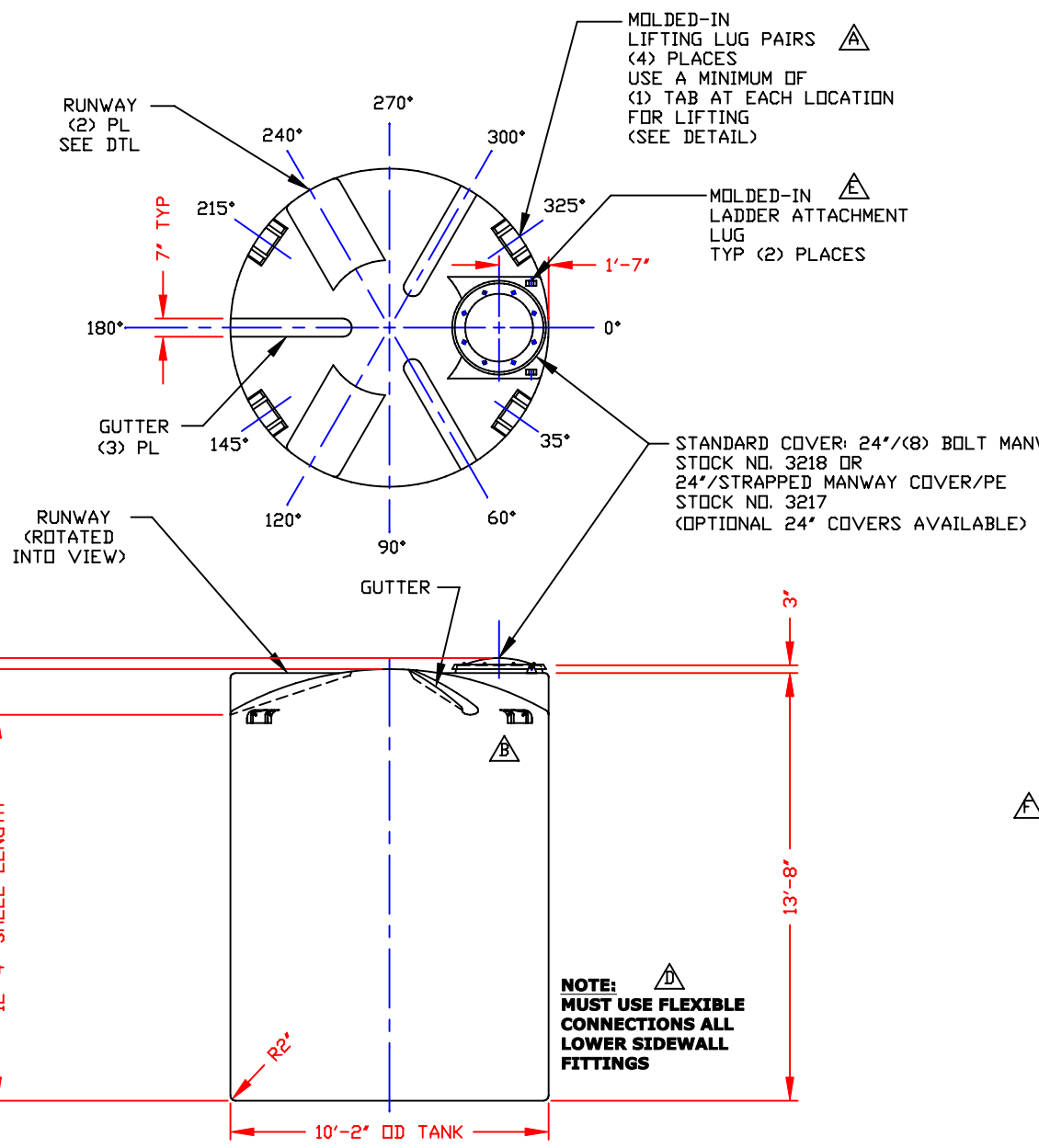
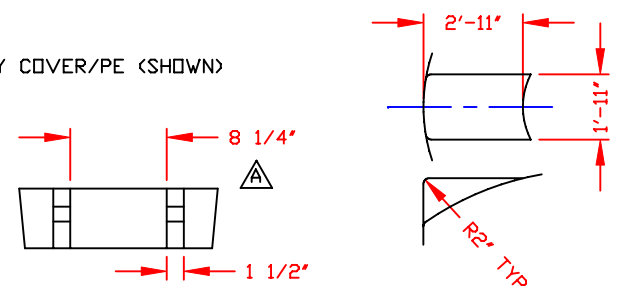


NON-CONTROLLED COPY
 INFORMATION SUBJECT TO CHANGE WITHOUT NOTICE
 VERIFY REV LEVEL OF PAPER COPY WITH REV LEVEL ON PPC WEB SITE

REV "A" ADDED LIFTING LUGS & DETAILS BY:JB 7/11/02 CK:WM
 REV "B" CORRECTED LIFTING LUGS LOCATIONS IN ELEV VIEW BY:JB 7/25/02 CK:WM
 REV "C" ADDED DIMENSION BY:JB 10/21/02 CK:MBW
 REV "D" ADDED FITTING NOTE BY:MBW 12/17/03 CK:JB
 REV "E" ADDED LADDER ATTACHMENT LUGS BY:JB 7/21/04 CK:WM
 REV "F" REVISED NOTE 2 BY:JB 5/21/07 CK:MBW



SERVICE	MK	STOCK NO.	SIZE	FITTING	DEG	ELEV



NOTES

- THIS IS A COMPUTER GENERATED DWG. DO NOT REVISE BY HAND.
- MOLDED IN GALLONAGE MARKERS @ APPROX 60° IN 200 GAL INCREMENTS UP TO 7000 GAL. (CENTRAL REGION) MOLDED IN GALLONAGE MARKERS @ APPROX 355° IN 200 GAL INCREMENTS UP TO 7100 GAL. (WESTERN REGION)
- DIMENSIONS WILL VARY ±3% DUE TO VARIATIONS IN MULTIPLE MOLDS & CONDITIONS PREVALENT DURING MANUFACTURE & USAGE.

DESIGN CAP	DOME VOL	TOTAL VOL
7311	376	7687

CONFIDENTIAL PROPERTY OF POLY PROCESSING COMPANY
 NOT FOR REPRINT OR USE WITHOUT PERMISSION

DWG TITLE: 7300 GALLON UPRIGHT TANK

SCALE: 1/4"=1'-0"

DATE: 2-3-00

DR: D. RECTOR
 CK: MB WILKERSON

Central Region
 P.O. Box 4150 (71211)
 2501 Old Shawington Rd.
 Norcross, LA 71053
 CUB 342-7565
 FAX 332-343-8795

POLYPROCESSING COMPANY

SHEET 1 OF 1
 COMPUTER FILE 1007300
 REV F