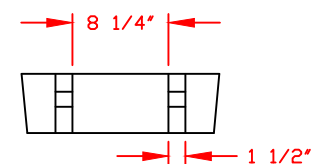
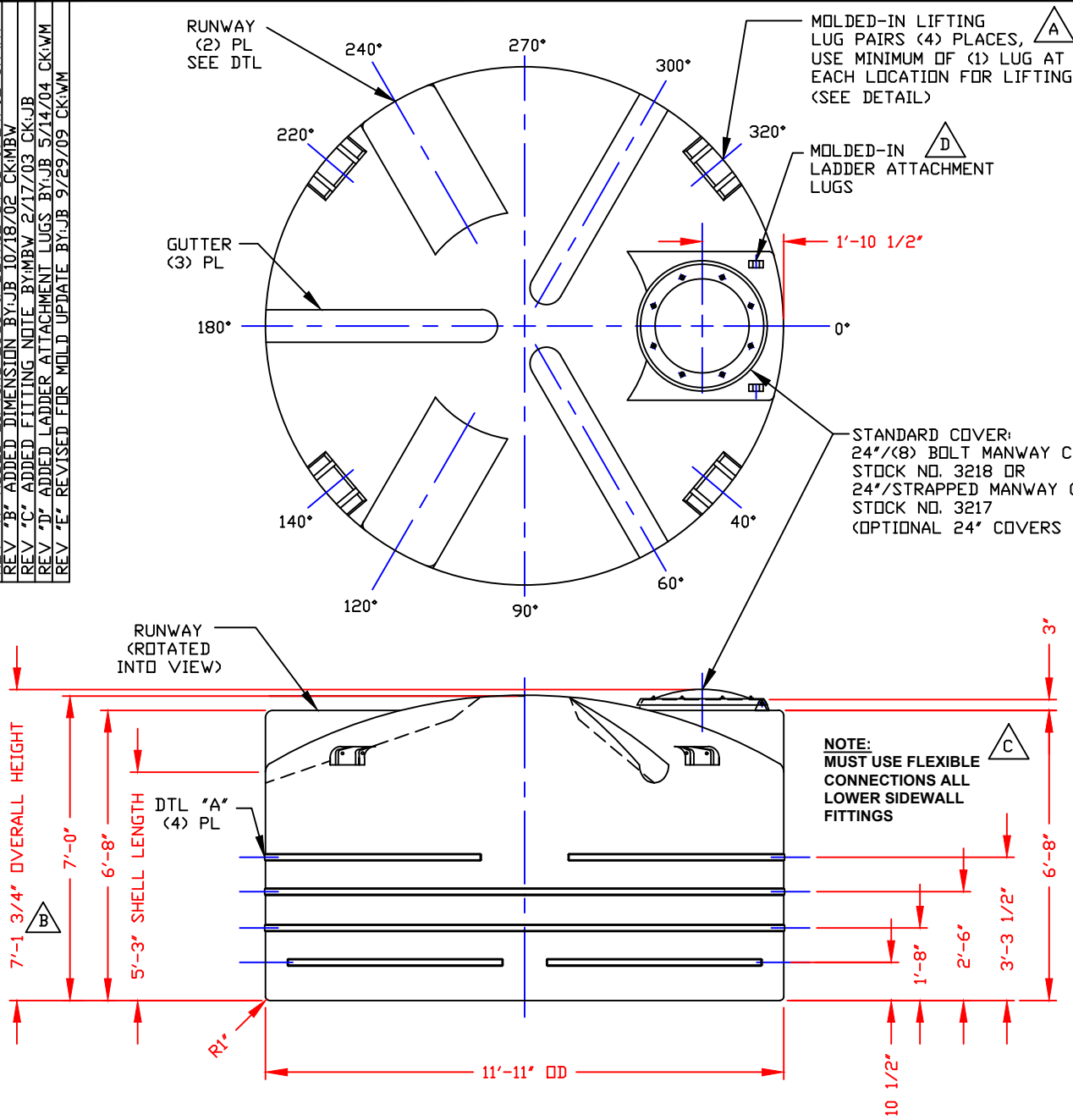
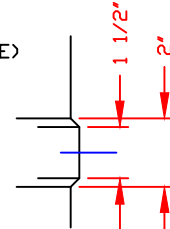


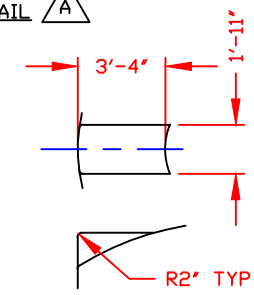
REV 'A' ADDED LIFTING LUGS & DETAIL BY:JB 9/24/02 CK:WM  
 REV 'B' ADDED DIMENSION BY:JB 10/18/02 CK:MBW  
 REV 'C' ADDED FITTING NOTE BY:MBW 2/17/03 CK:JB  
 REV 'D' ADDED LADDER ATTACHMENT LUGS BY:JB 5/14/04 CK:WM  
 REV 'E' REVISED FOR MOLD UPDATE BY:JB 9/29/09 CK:WM



**LIFTING LUG DETAIL [A]**  
 (4) PLACES  
 SCALE: 1"=1'-0"



**DETAIL 'A' STIFFENER BAND**  
 (4) PLACES  
 SCALE: 3"=1'-0"



**RUNWAY DETAIL**  
 (2) PLACES  
 NO SCALE

NOTE: 12" BREAK IN BTM BAND @ 0°, 90°, 180°, & 270°--24" BREAK IN TOP BAND @ 90°

- NOTES**
- THIS IS A COMPUTER GENERATED DWG. DO NOT REVISE BY HAND.
  - DIMENSIONS WILL VARY ±3% DUE TO VARIATIONS IN MULTIPLE MOLDS & CONDITIONS PREVALENT DURING MANUFACTURE & USAGE.
  - NO MOLDED IN GALLONAGE MARKERS THIS TANK.

CALCULATED CAPACITIES/ VOLUME IN U.S. GALLONS		
DESIGN	CAP	DOME VOL
4322	675	4997

CONFIDENTIAL PROPERTY OF  
 POLY PROCESSING COMPANY  
 NOT FOR REPRINT OR USE  
 WITHOUT PERMISSION

DWG TITLE		4250 GALLON UPRIGHT TANK	
SCALE:	3/8"=1'-0"	 Central Region P.O. Box 4150 (71613) 2201 Old Springington Rd. Monroe, LA 71203 (504) 343-7543 FAX (504) 343-8795	DR:
DATE:	9/27/99		CK:
SHEET		COMPUTER FILE	REV
1 OF 1		1004250	E