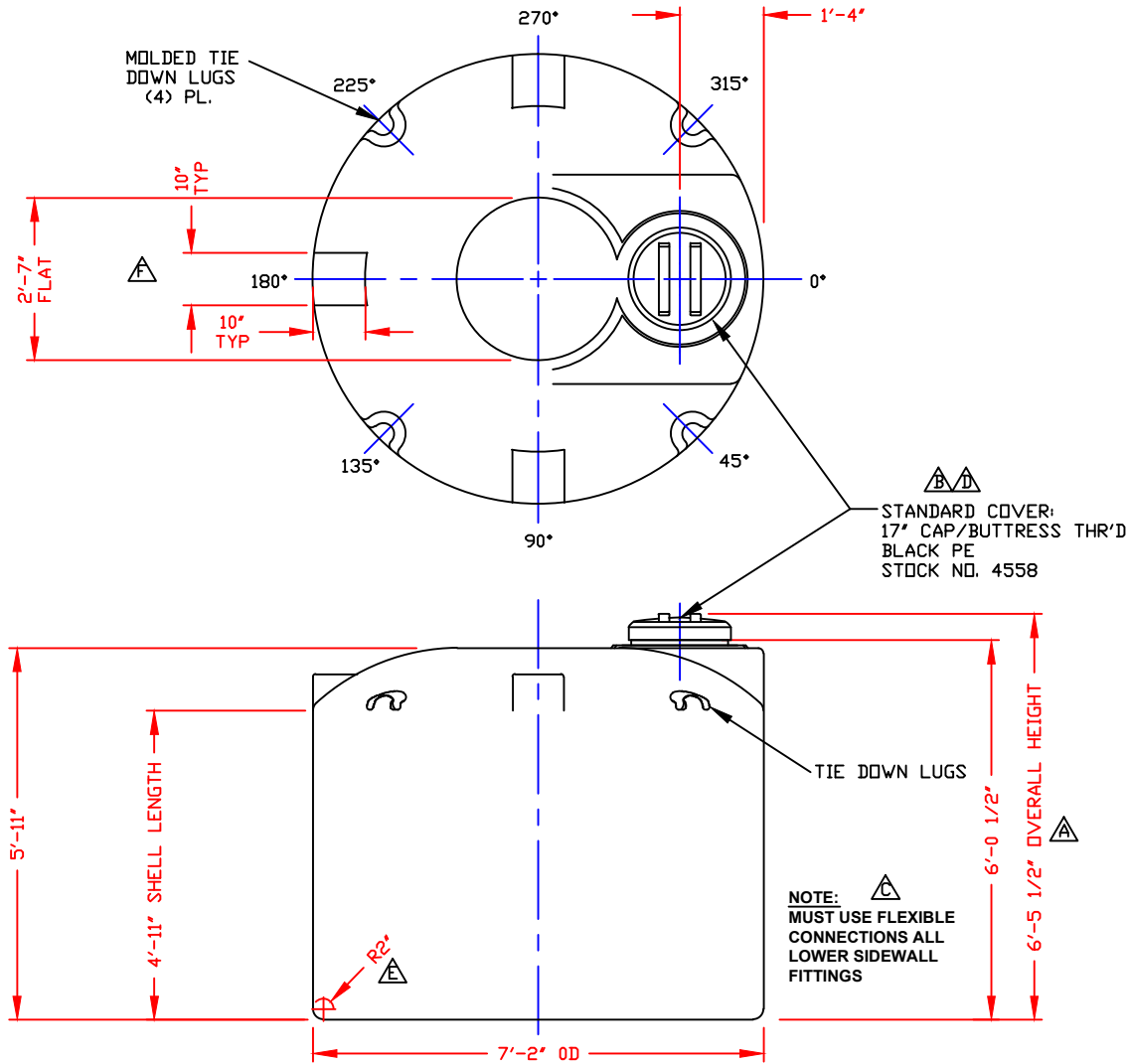


NON-CONTROLLED COPY
 INFORMATION SUBJECT TO CHANGE WITHOUT NOTICE
 VERIFY REV LEVEL OF PAPER COPY WITH REV LEVEL ON PPC WEB SITE

NOZZLE SCHEDULE & ACCESSORIES

SERVICE	MK	STOCK NO.	SIZE	FITTING	DEG	ELEV



- NOTES:
1. THIS IS A COMPUTER GENERATED DWG. DO NOT REVISE BY HAND.
 2. DIMENSIONS WILL VARY ±3% DUE TO VARIATIONS IN MULTIPLE MOLDS & CONDITIONS PREVALENT DURING MANUFACTURE & USAGE.
 3. MOLDED IN GALLONAGE MARKERS IN MANWAY AREA IN 100 GALLON INCREMENTS UP TO 1600 GALLONS.

CALCULATED CAPACITIES/ VOLUME IN U.S. GALLONS		
DESIGN CAP	DOME VOL	TOTAL VOL
1464	147	1611

CONFIDENTIAL PROPERTY OF
 PDLY PROCESSING COMPANY
 NOT FOR REPRINT OR USE
 WITHOUT PERMISSION

- REV "F" ADDED FTG FLATS TO DOME BY:JB 1/8/12 CK:CD
- REV "E" REVISED KNUCKLE RADIUS BY:BT4/26/12 CK:WM
- REV "D" REVISED COVER BY:JB 7/23/09 CK:WM
- REV "C" ADDED FITTING NOTE BY:MBW 2/17/03 CK:JB
- REV "B" REVISED LID BY:MBW 2/17/03 CK:JB
- REV "A" ADDED DIMENSION BY:JB 10/16/02 CK:MBW

DWG TITLE: 1450 GALLON UPRIGHT TANK

SCALE: 1/2"=1'-0"

DATE: 9/22/99

POLYPROCESSING SOLUTIONS. SIMPLIFIED

Central Region
 P.O. Box 488 (71823)
 25th Old Shreveport Rd.
 Norwood, LA 72062
 (504) 343-7800
 FAX (504) 343-9795

DR: MB WILKERSON
 CK: D. RECTOR

SHEET 1 OF 1

COMPUTER FILE 1001450

REV F