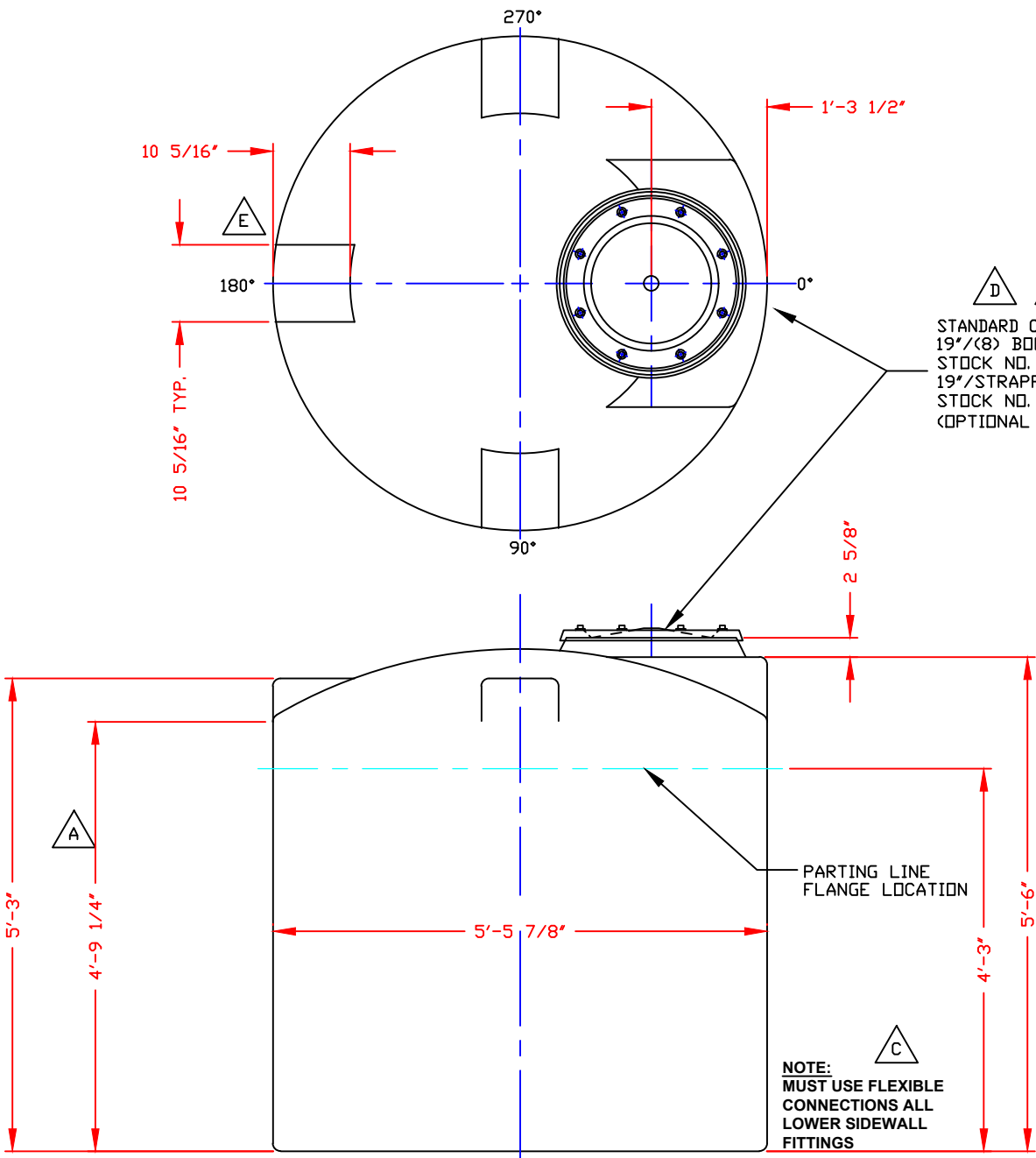


NON-CONTROLLED COPY
 INFORMATION SUBJECT TO CHANGE WITHOUT NOTICE
 VERIFY REV LEVEL OF PAPER COPY WITH REV LEVEL ON PPC WEB SITE

NOZZLE SCHEDULE & ACCESSORIES					
SERVICE	MK	STOCK NO.	SIZE	FITTING	DEG ELEV



△ D △ F
 STANDARD COVER:
 19" (8) BOLT MANWAY COVER/PE (SHOWN)
 STOCK NO. 3214 OR
 19" STRAPPED MANWAY COVER/PE
 STOCK NO. 3212
 (OPTIONAL 19" COVERS AVAILABLE)

REV 'F' CHANGED MANWAY TO 19" BY: KS 6/24/19 CK: CR
 REV 'E' ADDED FTG FLATS TO DOME BY: JB 1/10/13 CK:WM
 REV 'D' REVISED COVER BY: JB 8/4/09 CK:WM
 REV 'C' ADDED FITTING NOTE BY: MBW 2/11/03 CK: JB
 REV 'B' REVISED LID BY: MBW 2/11/03 CK: JB
 REV 'A' ADDED DIMENSION BY: JB 10/15/02 CK: MBW

NOTES
 1. THIS IS A COMPUTER GENERATED DWG. DO NOT REVISE BY HAND.
 2. DIMENSIONS WILL VARY ±3% DUE TO VARIATIONS IN MULTIPLE MOLDS & CONDITIONS PREVALENT DURING MANUFACTURE & USAGE.
 3. NO MOLDED IN GALLONAGE MARKERS THIS TANK.

CALCULATED CAPACITIES/ VOLUME IN U.S. GALLONS		
DESIGN CAP	DOME VOL	TOTAL VOL
756	61	817

CONFIDENTIAL PROPERTY OF
 POLY PROCESSING COMPANY
 NOT FOR REPRINT OR USE
 WITHOUT PERMISSION

DWG TITLE					
755 GALLON UPRIGHT TANK					
SCALE:	3/4"=1'-0"	 POLYPROCESSING SOLUTIONS. SIMPLIFIED.	Central Region P.O. Box 4159 (71823) 2801 Old Springington Rd. Monroe, LA 71293 CITY 343-7543 FAX (504) 343-8795	DR:	MB WILKERSON
DATE:	9/21/99		CK:	D. RECTOR	
SHEET			COMPUTER FILE	REV	
1 OF 1			1000755	F	

NOTE:
 MUST USE FLEXIBLE
 CONNECTIONS ALL
 LOWER SIDEWALL
 FITTINGS