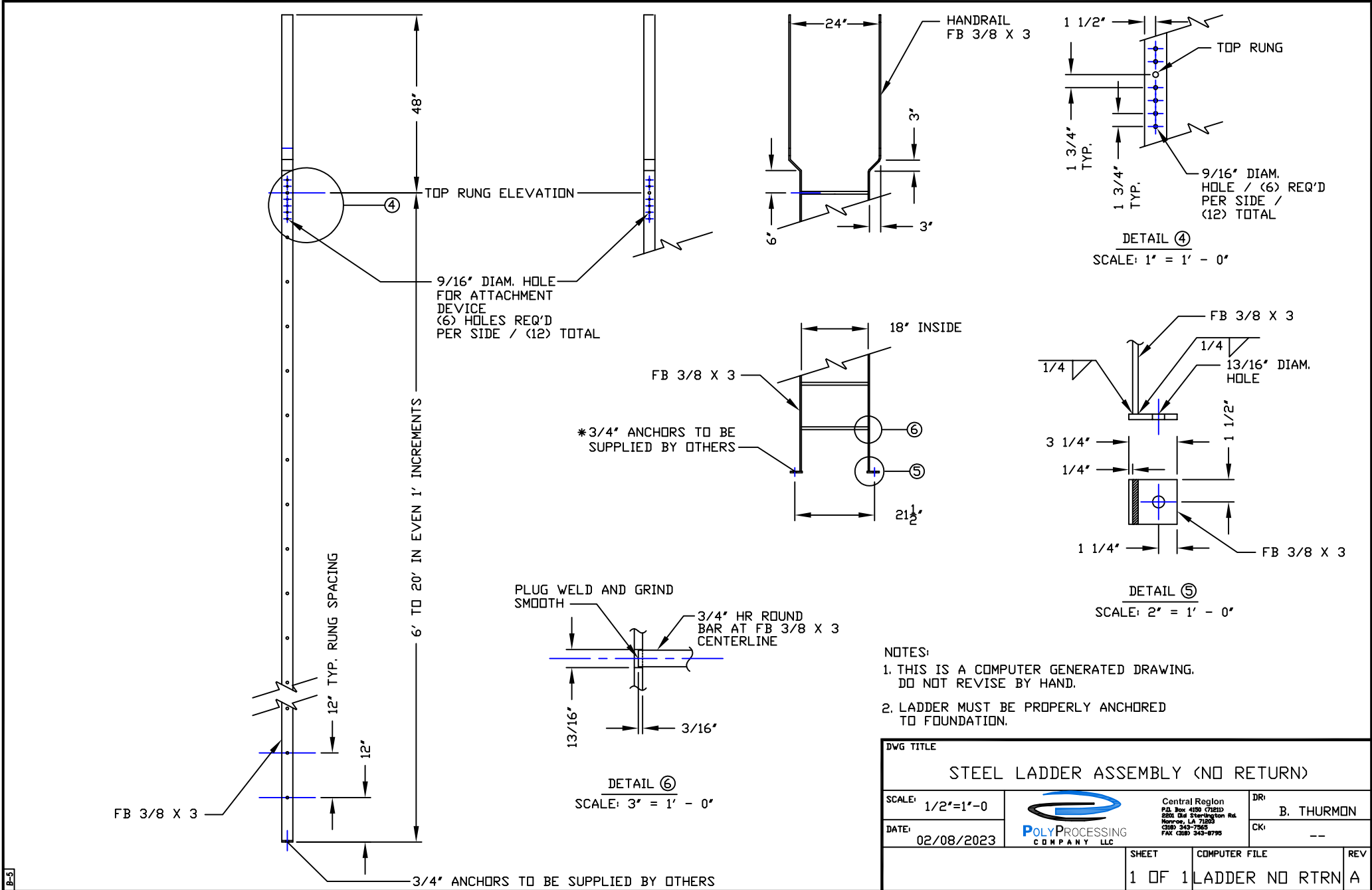



NON-CONTROLLED COPY
 INFORMATION SUBJECT TO CHANGE WITHOUT NOTICE
 VERIFY REV LEVEL OF PAPER COPY WITH REV LEVEL ON PPC WEB SITE



- NOTES:
- THIS IS A COMPUTER GENERATED DRAWING. DO NOT REVISE BY HAND.
 - LADDER MUST BE PROPERLY ANCHORED TO FOUNDATION.

DWG TITLE			
STEEL LADDER ASSEMBLY (NO RETURN)			
SCALE: 1/2"=1'-0"	 POLYPROCESSING COMPANY LLC	Central Region P.O. Box 4150 (71811) 8201 Old Sterlington Rd. Monroe, LA 71203 (504) 343-7565 FAX (504) 343-8795	DR: B. THURMON
DATE: 02/08/2023		CK: --	
SHEET	COMPUTER FILE	REV	
1 OF 1	LADDER NO RTRN	A	