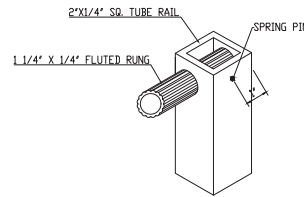
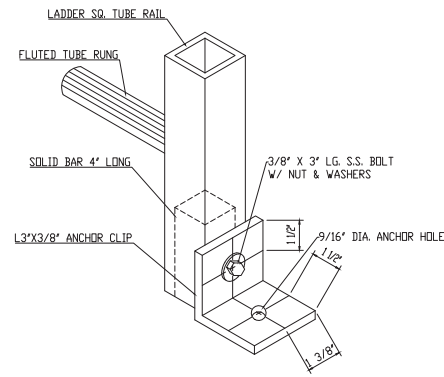


SCALE: 1"=1'-0"



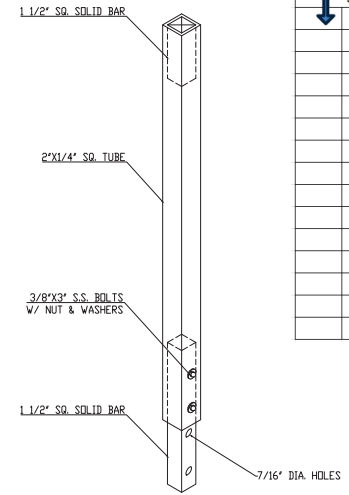
LADDER RUNG DETAIL

SCALE: N.T.S.



ANCHOR CLIP DETAIL

SCALE: N.T.S.



LADDER WALK-THRU POST DETAIL

SCALE: N.T.S.

Select Ladder

X Dim	Y Dim
5'	8' 6"
6'	9' 6"
7'	10' 6"
8'	11' 6"
9'	12' 6"
10'	13' 6"
11'	14' 6"
12'	15' 6"
13'	16' 6"
14'	17' 6"
15'	18' 6"
16'	19' 6"
17'	20' 6"
18'	21' 6"

- FRP LADDER:**
- 1.) FABRICATED IN ACCORDANCE WITH OSHA REQUIREMENTS #1910.27
 - 2.) SIDE RAILS ARE TO BE 2" x 1/4" FRP SQUARE TUBING.
 - 3.) RUNGS ARE TO BE 1 1/4" DIA. x 1/4" ROUND FLUTED TUBE.
 - 4.) RUNGS ARE TO BE ATTACHED TO SQUARE TUBING WITH DOWEL AND GLUE METHOD, PREVENTING RUNG ROTATION.
 - 5.) STAND-OFF CLIPS ARE SPACED @ 6'-0" MAXIMUM AND TO BE FRP.
 - 6.) RESIN SYSTEMS TO BE VINYLESTER.
 - 7.) STAND-OFF CLIPS TO BE FIELD LOCATED AND INSTALLED.
 - 8.) STAND-OFF & BASE CLIPS TO BE VINYLESTER BEGE.
 - 9.) FRP MATERIALS MEETS ASTM E-84, CLASS 1, FLAME SPREAD RATING LESS THAN 25 AND SELF EXTINGUISHING REQUIREMENTS OF ASTM D-635.

POLYPROCESSING
COMPANY, INC.

CENTRAL REGION
P.O. BOX 4155 (11211)
2201 OLD STERLINGTON RD.
MONROE, LA 71223
PH: 318-343-7555
FAX: 318-343-8795

SCALE: 1" = 1'-0"	DATE: 12-18-13	APPROVED BY:	DESIGNED BY:	DRAWN BY: JLA
TITLE: FRP LADDER				
LADDER NO.:	LOCATION: MONROE, LOUISIANA	DRAWING NO.:		