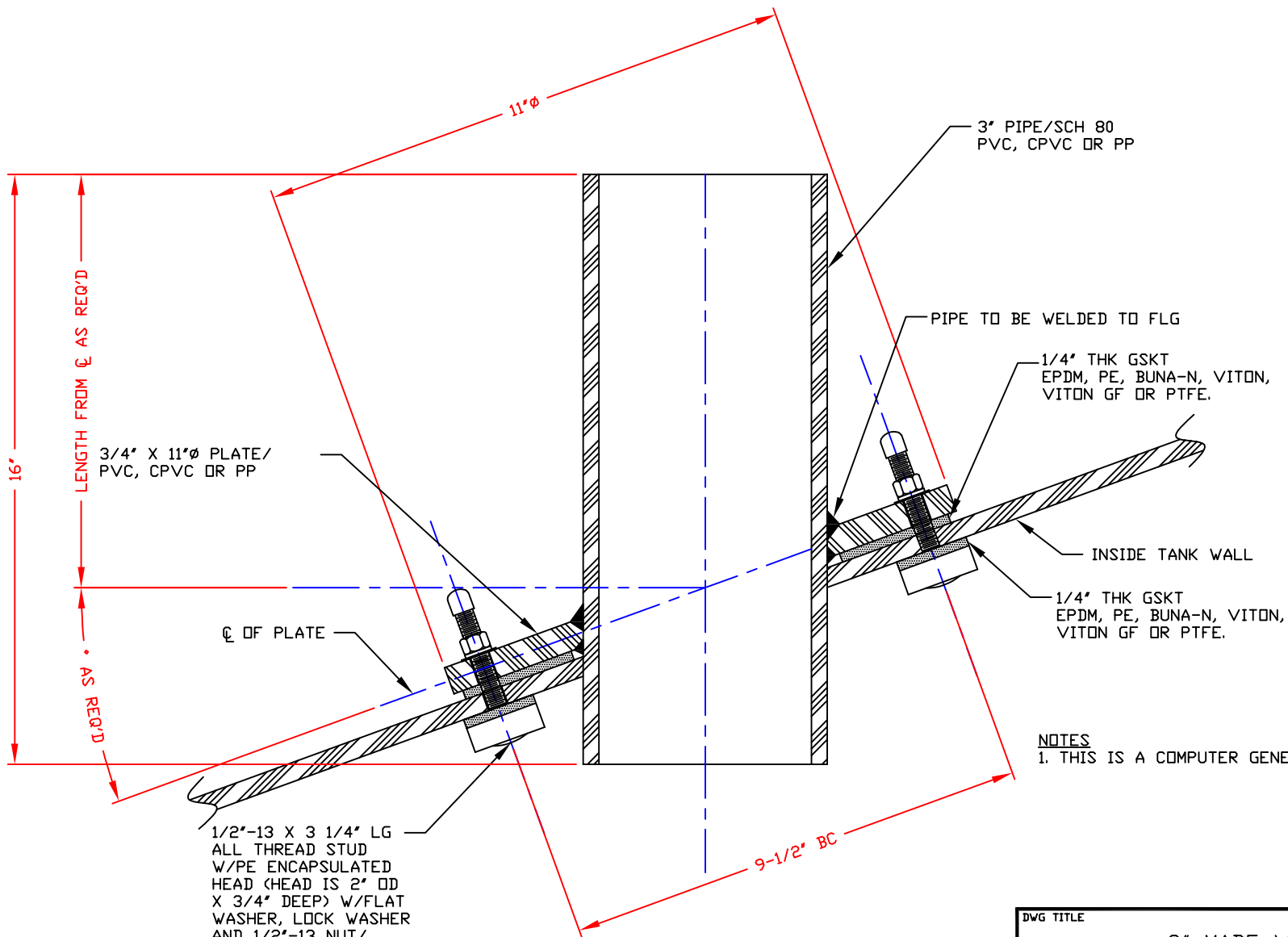



NON-CONTROLLED COPY
 INFORMATION SUBJECT TO CHANGE WITHOUT NOTICE
 VERIFY REV LEVEL OF PAPER COPY WITH REV LEVEL ON PPC WEB SITE



NOTES
 1. THIS IS A COMPUTER GENERATED DWG. DO NOT REVISE BY HAND.

CONFIDENTIAL PROPERTY OF
 POLY PROCESSING COMPANY
 NOT FOR REPRINT OR USE
 WITHOUT PERMISSION

1/2"-13 X 3 1/4" LG
 ALL THREAD STUD
 W/PE ENCAPSULATED
 HEAD (HEAD IS 2" OD
 X 3/4" DEEP) W/FLAT
 WASHER, LOCK WASHER
 AND 1/2"-13 NUT/
 316SS, RYTON, ALLOY 400,
 TITANIUM OR ALLOY C276.
 (8) BOLTS REQ'D. HOLES FOR
 BOLTS TO BE 5/8"φ.

DWG TITLE			
3" MADE VERTICAL FITTING			
SCALE:	NONE	 POLYPROCESSING COMPANY, LLC	DR: B. THURMON
DATE:	04/06/10		CK:
		SHEET	COMPUTER FILE
		1 OF 1	TTDFTG3
		REV	-