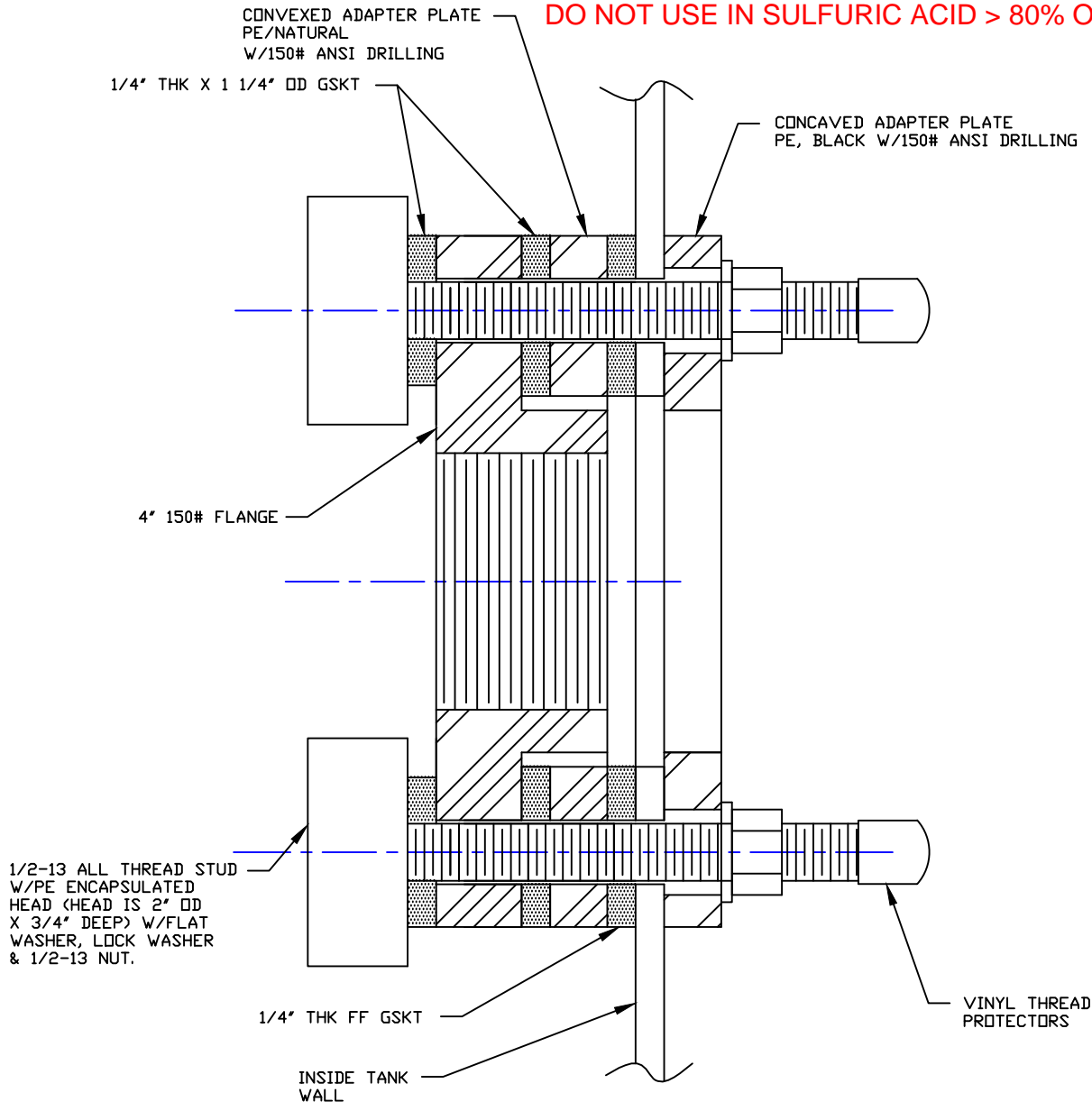


NON-CONTROLLED COPY
 INFORMATION SUBJECT TO CHANGE WITHOUT NOTICE
 VERIFY REV LEVEL OF PAPER COPY WITH REV LEVEL ON PPC WEB SITE

DO NOT USE IN SULFURIC ACID > 80% OR IN HCL



Fitting Material:

Bolt Type:

Gasket Material:

Flange Type:

PIPE SIZE	OUTSIDE DIAMETER	BOLT CIRCLE	NUMBER BOLTS
4"	9"	7 1/2"	8

NOTES

1. THIS IS A COMPUTER GENERATED DWG. DO NOT REVISE BY HAND.
2. FLANGES WILL BE THREADED UNLESS SPECIFIED OTHERWISE.
3. BOLTED FLANGE BULKHEAD FITTINGS MAY BE USED ON THE TANK SIDE WALL, IN THE BOTTOM, OR IN THE CENTER OF THE DOME. BOLTED FLANGE BULKHEAD FITTINGS MAY ALSO BE USED ELSEWHERE ON THE DOME IF IT IS NOT NECESSARY THAT THE FITTING BE VERTICAL TO THE BASE AS THE FITTING WILL FOLLOW THE CURVE OF THE DOME.

DWG TITLE			
4" BOLTED FLANGE BULKHEAD FITTING			
SCALE:	FULL		DR: C. DAVIES
DATE:	4/19/07		CK: J. BRANTLEY
		SHEET	COMPUTER FILE
		1 OF 1	4BLTDFLGBHFM -