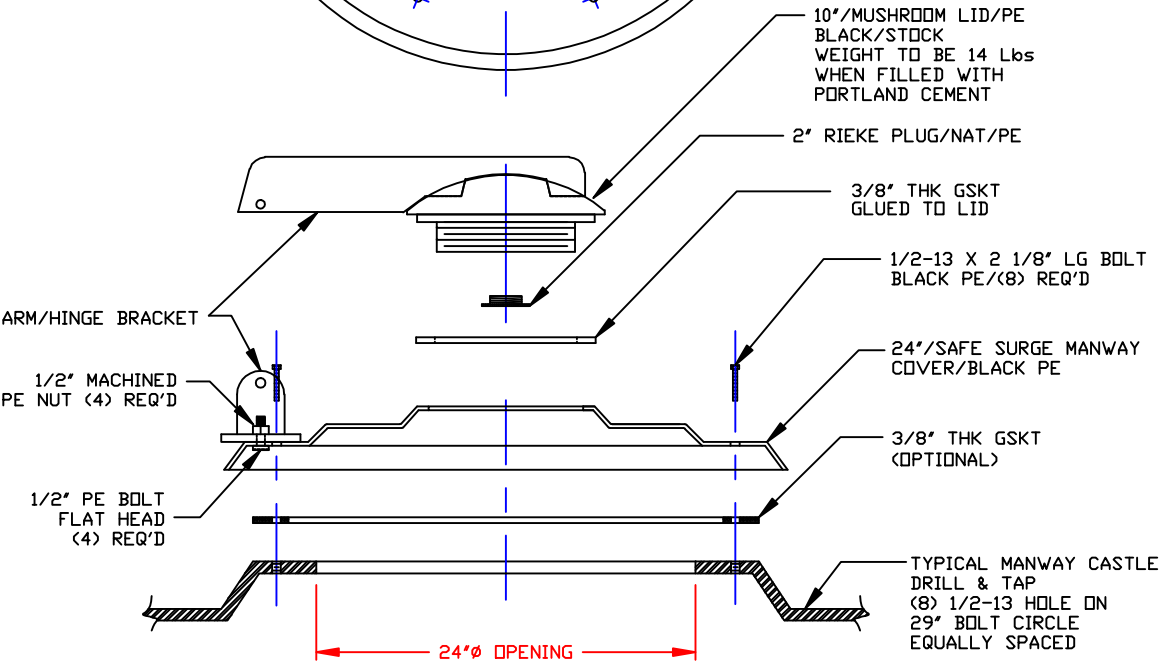
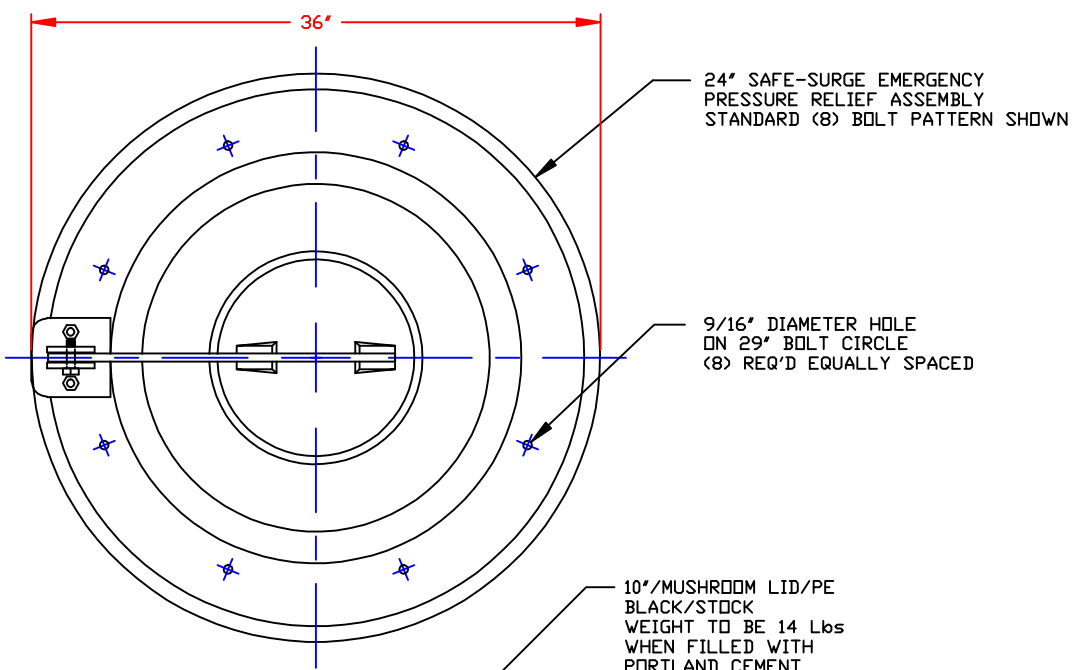



NON-CONTROLLED COPY
 INFORMATION SUBJECT TO CHANGE WITHOUT NOTICE
 VERIFY REV LEVEL OF PAPER COPY WITH REV LEVEL ON PPC WEB SITE

10" Gasket Material:
24" Gasket Material:



NOTES:
 1. THIS IS A COMPUTER GENERATED DWG.
 DO NOT REVISE BY HAND.

DWG TITLE			
24" SAFE-SURGE EMERGENCY PRESSURE RELIEF ASSEMBLY			
SCALE: 1 1/2"=1'-0"	 POLY PROCESSING COMPANY	<small>Central Region P.O. Box 4500 • 71221 25th Old Shreveport Rd. Norcross, LA 71055 CEN 343-7525 FAX 508 343-9795</small>	DR: S. NEWBURY CK: J. BRANTLEY
DATE: 7/1/10		SHEET 1 OF 1	COMPUTER FILE 24MWYSSM