

## Poly Level Leak Detection (Non Contact) Sensor

The Poly Level Leak Detection (PLLD) Industrial Series is an advanced All Plastic Corrosion Resistant Leak Detection Liquid Level Sensor that utilizes ultra-sensitive electrostatic technology, which constantly and accurately sense the presence of liquids.

These sensors are Ideally suited for monitoring the interstitial area between double wall tanks, tank Retention Dikes, Secondary Containment Sumps, and areas where Process Pumps and Valves are utilized. The PLLD sensor has been engineered to withstand even the most extreme conditions while including features designed to optimize performance and reduce maintenance.

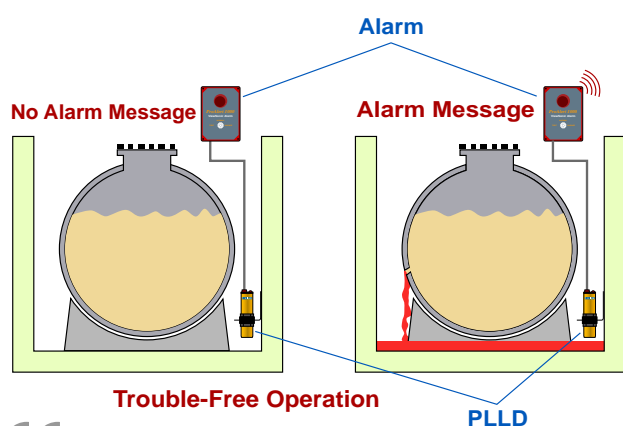


### Features

- ▶ Suitable for Corrosive Environments
- ▶ High Stability with Thermal Compensation
- ▶ PP All Plastic Body
- ▶ Non-Contact Technology

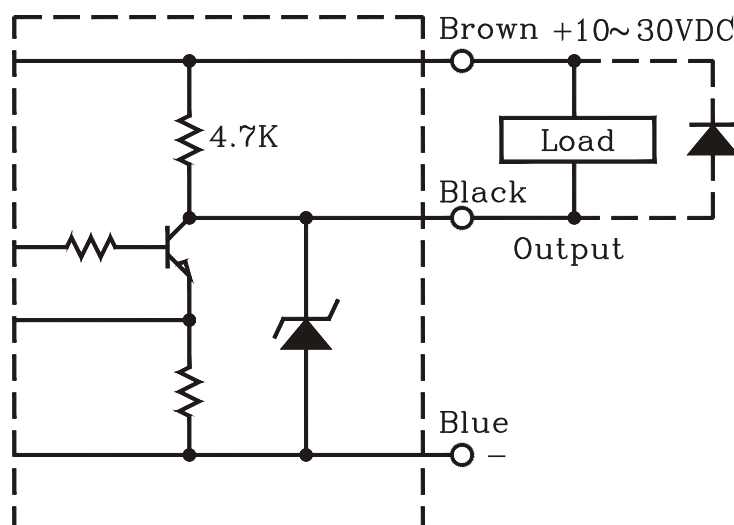
### General Data

SPECIFICATION	DESCRIPTION
Operating voltage	10-30 VDC
Current consumption	20 mA max.
Response frequency	100Hz
Output current	150 mA max.
Leakage current	0.8 mA max.
Residual voltage	0.8 V max.
Protection circuit	Short Circuit & Polarity Reversed
Target	Liquid Level
Operating circumstance	-25 C - +80 C : 35% -95%RH
Case/Dimension	General Purpose
Output status	NO / NC
Output method	NPN Relay Output
Sensing distance	20.0 mm
Operating voltage	10-30 VDC
Sensitivity adjuster	14 Turns Trimmer
Housing material	PP

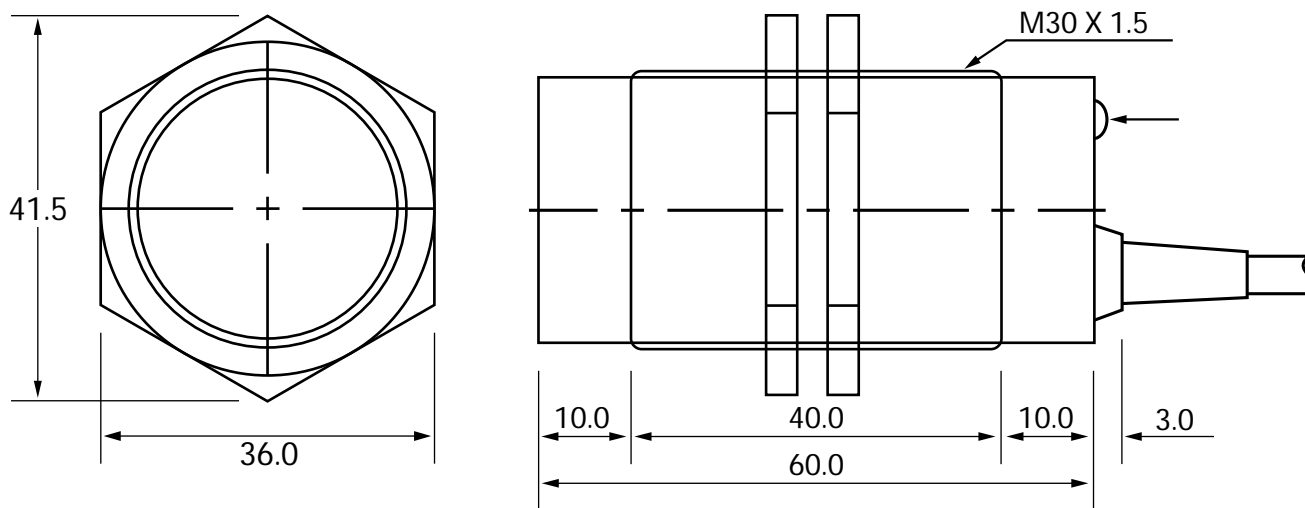


## Wiring Diagram

### DC Powered NPN Relay Mode



## Dimensions



# Poly Level Leak Detection Alarm System

## Industrial Visual/Audible Sentry Alarm System

### FEATURES

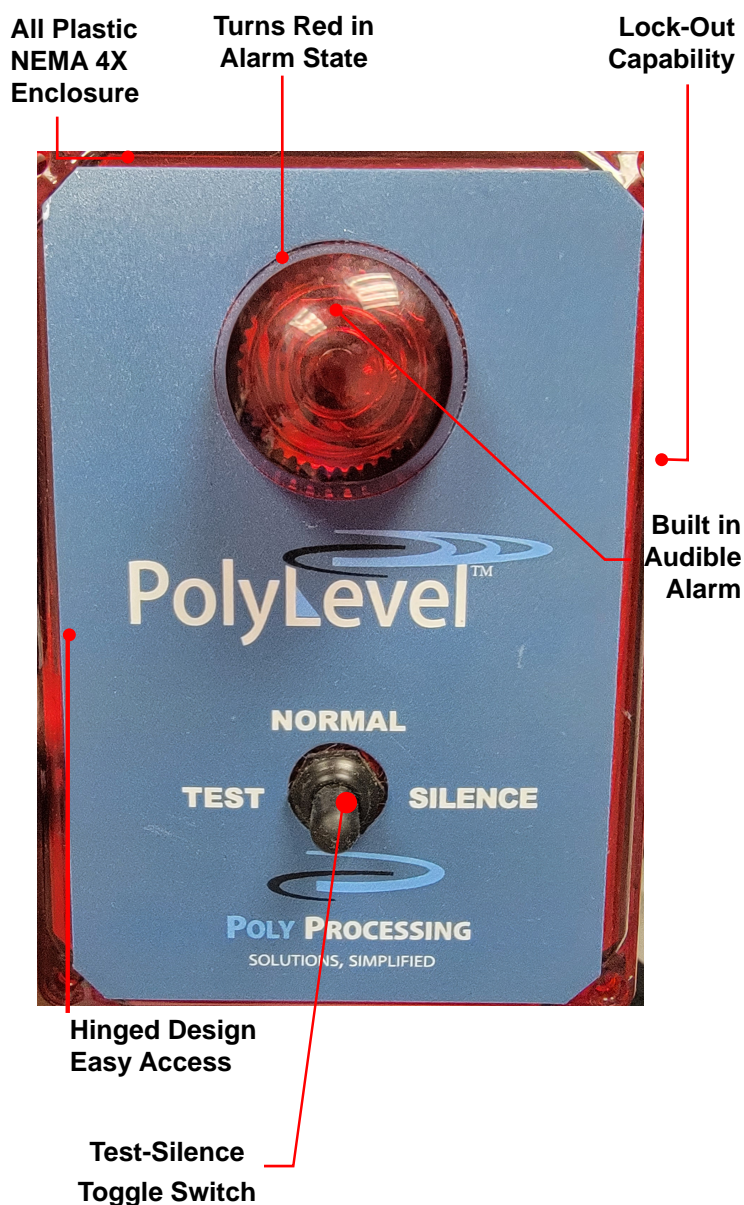
- High Intensity Red Alarm Light
- 90 dB Audible Alarm with External Test-Silence-Normal Positions
- Rugged NEMA 4X Industrial Design Enclosure
- Latching Lockable Cover (No Screws Required) Lockable
- External Mounting Feet Installs in Minutes
- UL Listed Enclosure (CSA)
- High Impact All Plastic Polycarbonate Shell
- Small Foot Print - Compact Design
- Excellent Chemical Resistance
- Includes 6' Power Cord + Seal-Tight Cord Connector

### TYPICAL APPLICATIONS

- High/Low Level Sensing for Tanks/Sumps
- Bag/Filter Change out
- Leak Detection
- Flow/No Flow Sensors - Pump Protect
- Upset Condition Notification

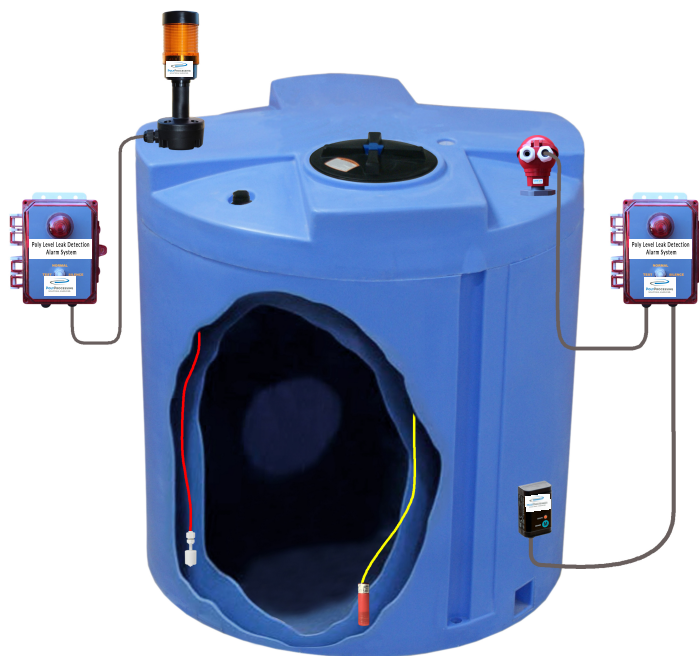
### SPECIFICATIONS

Dimensions 7" X 5" X 4.5"  
Enclosure NEMA 4X  
Weight 2.1 lbs.  
Voltage/Freq/Amps 120v/60Hz/1 Amp  
Input Power 100 v - 240 v



## ALARM INSTALLATION

- Decide Mounting location.
- Install the unit using the built-in mounting feet.
- Hook the 120 VAC plug into a 120 VAC receptacle on a separate branch circuit from the one used for the sensor/flow switch to ensure proper notification.
- Connect Switch/Sensor Following Manufacturers Instructions.
- Switch the toggle switch to the "Normal" position. Manually test the alarm by powering the sensor/flow switch until you hear the alarm notification and you see the alarm light turn on.
- Periodically test unit by moving the toggle switch to the "Test" position Recommended prior to filling or draining.
- The audible alarm can be silenced by moving the toggle switch to the "Silence" position. Ensure the toggle switch is typically left in the "Normal" position for proper alarm notification.



### WARNING



#### ELECTRICAL SHOCK HAZARD

Disconnect power before installing or servicing this product. A qualified service person must install and service this product according to applicable electrical and plumbing codes.

### WARNING



#### EXPLOSION OR FIRE HAZARD

Do not use this product with flammable liquids. Do not install in hazardous locations as defined by CSA, ANSI/NFPA 70.

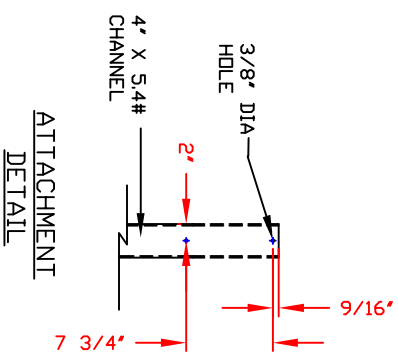
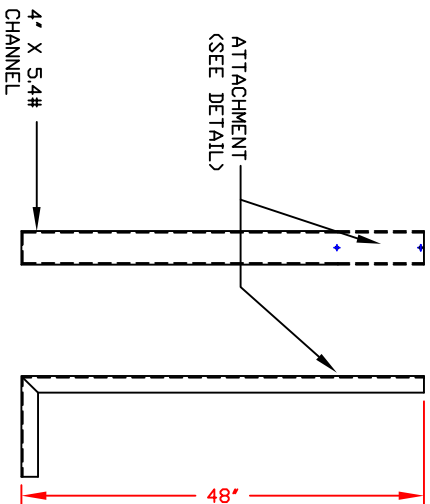
Failure to follow these precautions could result in serious injury or death. Replace product immediately if switch cable becomes damaged or severed. Keep these instructions with warranty after installation. This product must be installed in accordance with CSA, ANSI/NFPA 70 so as to prevent moisture from entering or accumulating within boxes, conduit bodies, fittings, float housing, or cable.

## MODELS

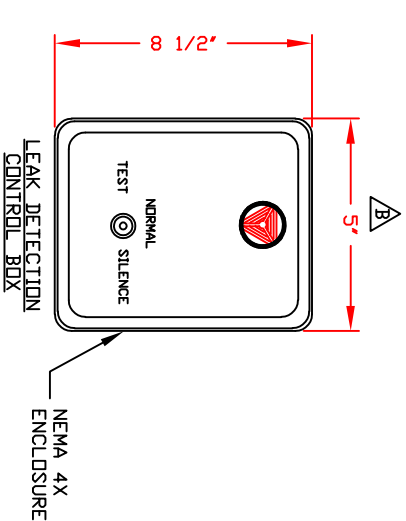
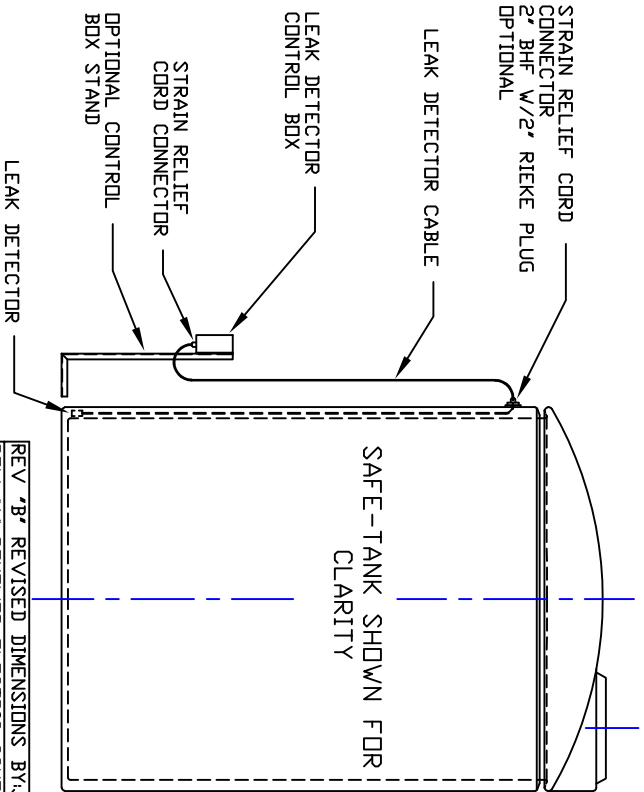
- PLLD ProAlert 120V-Dry Contact Input
- PLLD -Pulse Input-Timer Relay Signal



NON-CONTROLLED COPY  
INFORMATION SUBJECT TO CHANGE WITHOUT NOTICE  
VERIFY REV LEVEL OF PAPER COPY WITH REV LEVEL ON PPC WEB SITE



OPTIONAL CONTROL BOX STAND



NOTES  
1. THIS IS A COMPUTER GENERATED DWG. DO NOT REVISE BY HAND.

CONFIDENTIAL PROPERTY OF  
POLY PROCESSING COMPANY  
NOT FOR REPRINT OR USE  
WITHOUT PERMISSION

DWG TITLE			
POLY LEVEL ELECTRONIC LEAK DETECTION DEVICE			
SCALE:	NONE	DR: BHARPER	
DATE:	9/7/18	CK: BHARPER	
SHEET		COMPUTER FILE	REV
1 OF 1		PLEAKDET	

Central Region  
Poly Processing  
Company, LLC

800 345-7262  
800 345-7262  
FAX 800 345-7262



## NEMA 4X ALARM - INSTALLATION INSTRUCTIONS

1. Decide mounting location for PolyLevel Alarm
2. Install the unit using the built-in mounting feet.
3. Hook the 120 VAC plug into a 120 VAC receptacle
4. Switch the toggle switch to the “Normal” position. Now manually test the alarm by activating the connected sensor until you hear the alarm notification and you see the alarm light turn on.
5. Periodically test unit by moving the toggle switch to the “Test” position.
6. The audible alarm can be silenced by moving the toggle switch to the “Silence” position. Make sure the toggle switch is typically left in the “Normal” position for proper alarm notification.

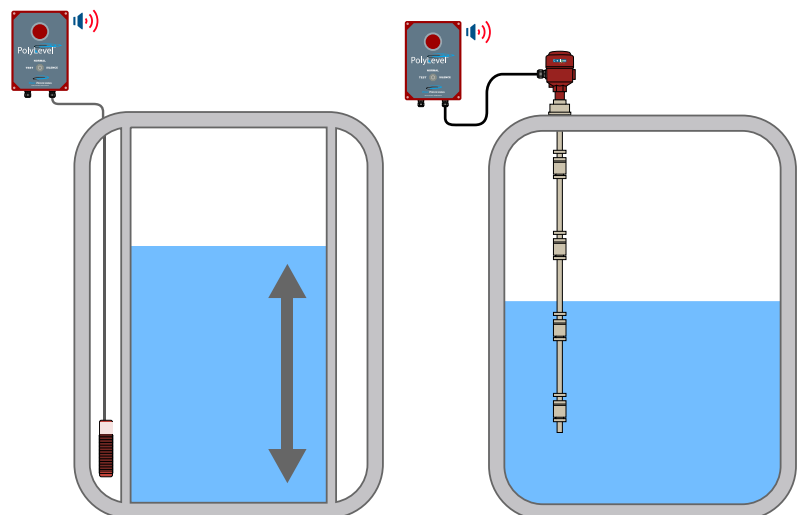
**WARNING****ELECTRICAL SHOCK HAZARD**

Disconnect power before installing or servicing this product. A qualified service person must install and service this product according to applicable electrical and plumbing codes.

**WARNING****EXPLOSION OR FIRE HAZARD**

Do not use this product with flammable liquids. Do not install in hazardous locations as defined by CSA, ANSI/NFPA 70.

Failure to follow these precautions could result in serious injury or death. Replace product immediately if switch cable becomes damaged or severed. Keep these instructions with warranty after installation. This product must be installed in accordance with CSA, ANSI/NFPA 70 so as to prevent moisture from entering or accumulating within boxes, conduit bodies, fittings, float housing, or cable.

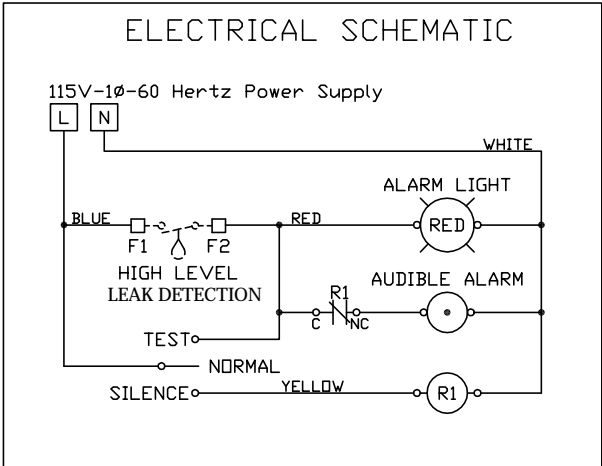
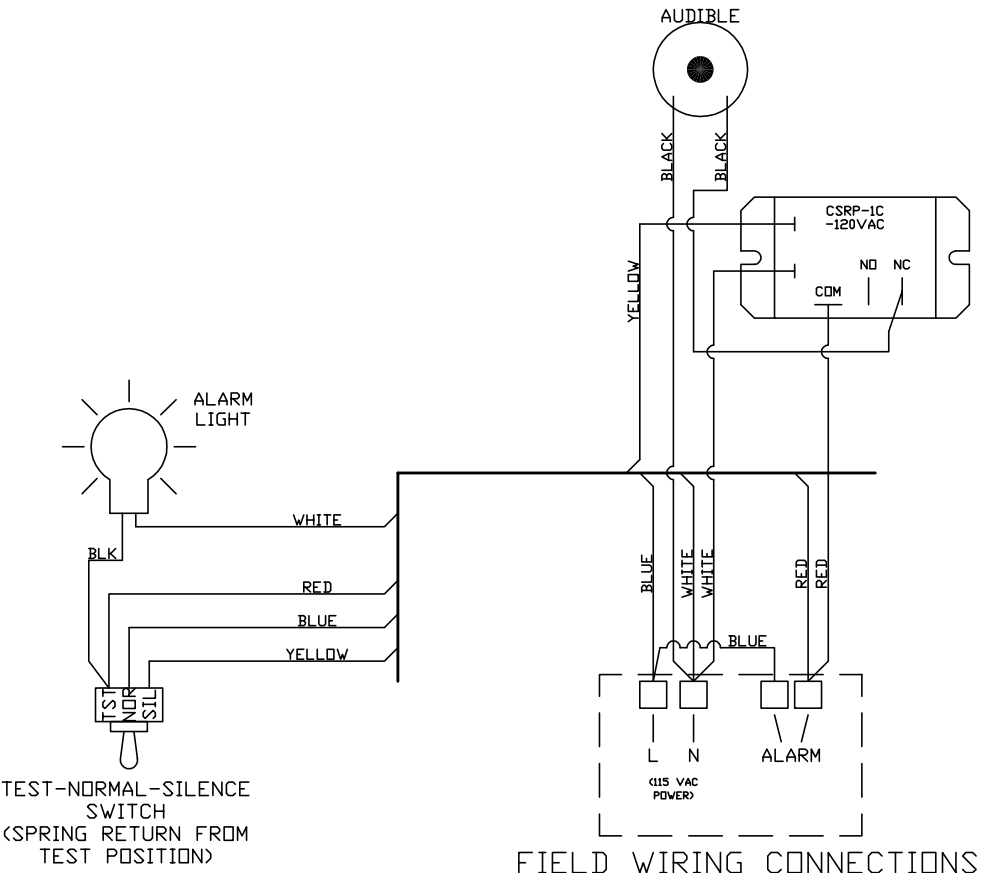


Leak Detection Indication

High/Low Point Level Indication

REV.	BY	DATE	DETAILS
1	DWF	1/27/18	Changed switch operation to Test-Normal-Silence

NOTES:  
- ALL WIRES, UNLESS SPECIFIED OTHERWISE, ARE TO BE 16 AWG.



PolyLevel™	WIRING DIAGRAM FOR ALARM CONTROLLER	DRWN.	DATE	SCALE	N/A
		ARW	2/21/18	DRWG. NO.	1275

# P2R SERIES

## Relay Controller / Timer / Power Supply



- Pulse Relay Input-5Amp Relay Output
- Relay Timer
- 120VAC (In) - 24VDC (Out)

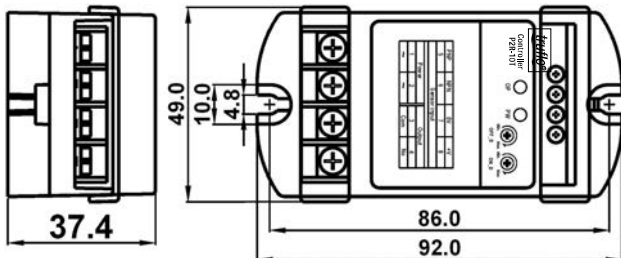
SERIES : P2R  
PART NUMBER : P2R-10T  
MATERIAL : Polycarbonate



### SPECIFICATIONS

Type	Sensor Relay Controller
Model	P2R-10T
Operating Voltage	90~265VAC
Current Consumption	3VA max.
Output DC Current	150 mA / 12VDC max.
Output Method	Relay
Contact Rated	5A/250VAC
Timer Control	ON delay : 0~5.0S ; OFF delay : 0~5.0S
EMC Immunity	RF Interference : 10V / M / ENV-50140
Protection Class	IP-65
Dielectric Strength	2.5kv / 1 minute min.
Insulation Strength	100 MΩ / 500vdc
Approval	CE / RoHS
Illumination	Sunlight > 20,000 Lux. ; Lamplight > 5,000 Lux.
Operating Temp	- 20°C ~ +80°C ; 35 ~ 85%RH
Housing Material	ABS intesive (UL-94V0)

### OUTLINE DIMENSION



### CONNECTION DIAGRAM

Black	NPN	Blue	0V	Brown	+V
5	6	7	8		
Sensor Input					
Power			Output		
1	2		3	4	
~	~		Com	No	
90~265VAC 50/60HZ			Contact Rated 5A/250VAC max.		

### TIMING CHART

