

# Chemical Tanks Proposal

Quote: Q-125148 June 19, 2025

Comes In Microsoft Word format so you can easily edit however you like! Use what you like! Easily Delete, Add, Select, or Change it to fit your message!



Represented by:  
[Your company and contact info ]

[Your Client Info box you can add]

Greg,

Peracetic Acid is a chemical Poly Processing builds a specific customized system for, and I have quoted this below.

One significant factor about this chemical is the heavy oxidation it brings to the tank wall. (It is the most oxidizing of all chemicals except for Ozone in solution!) While Crosslinked Polyethylene is the most corrosion resistant material available, A PE tank can still extend its life even further when this constant oxidation in storage is addressed. (The same is true with Sodium Hypochlorite). The antioxidant additive to the PE resin (OR1000- described below in more detail) will double the life of your tank out towards 20 years. OR1000 is *additional* repellent of oxidation (baked into the tank wall) that will extend life over what PE would be without it. It is only used with a handful of chemicals considered heavy oxidizers.

Poly Processing works with the leading producers of PAA (Peracetic Acid) directly, and ships PAA tank systems every month. PPC has a PAA storage webpage at the following link if you want to check it out. It has concentration breakdowns, safety, MSDS sheets, discussions, and more.

<https://blog.polyprocessing.com/blog/safely-storing-and-handling-peracetic-acid>

Let me provide you one last link- this one is for Poly's Chemical Position Statement on PAA. It is a nice data sheet that goes over recommended sizing issues for PAA but I have them all covered for you in this quote here.

[Open Peracetic Acid position statement](#)

Please contact me if I can answer any questions or revise this proposal in any way.

Thank You,

Johnny Rep

Custom default letters based on chemical, application, or tank features, pop in for you to use or edit how you like...

**Ask your Frontline if  
you need your quote  
Boosted like this!**

## Poly Processing Tank Offering

Main concept is differentiating how we are better than your competition.

### ◆ = Distinguishing Feature from Others

*This mark denotes Innovations in this proposal developed by Poly Processing Company (PPC) or its sister Chemical Company. PPC is unique among storage tank manufacturers, in being privately held. This allows heavy R&D each year for innovations not expensed by shareholder-controlled companies. See below or ask us about any feature having this mark, as to how it differs from others in longevity, safety, maintenance, or operational costs.*

## TANK SYSTEM 1:

QUICK FACTS on each system quoted.

For storing: Peracetic Acid, 25%, SPG 1.2

Application Parameters: Outdoor/To 100F/Wind 0/Seismic 0/Pneumatically Filled>/Non-Scrubber

Diameter: 10'-2" | Height: 14'-3" | Dome Manway Size: 24"

Stock Number: 12006650440CA

*Download links below are of the basic tank before assembly. Complete Approval Drawings available with PO.*

[PDF Drawing](#) / [CAD \(dwg file\)](#) / [3D-CAD \(stp file\)](#) | [PDF Gallon per Inch chart](#) | .

---

### Primary Tank (Quantity: 1)

6650 SAFE-Tank◆ (Inside Primary Tank)

1.90 specific gravity wall thickness

Crosslinked Polyethylene (XLPE)◆

Color: Natural (yellowish white)

Tank wall includes Oxidation Resistance additives (OR1000)◆

Links to exact drawings and references for the specific tanks being quoted in your quote

### Lid/Manway (Quantity: 1)

Cover Assembly 24" Safe-Surge system◆ with built in emergency pressure relief from pneumatic filling (polyethylene)

### Dome Fitting (Quantity: 3)

Bulkhead fitting Assembly 2" Full Nipple in 1-piece 316SS fitting

Robotically welded bolts (see below chart) /Stainless Steel/EPDM

### Level (Quantity: 1)

Universal Ball Dome Fitting 2" Bulkhead fitting Style PVC/EPDM

### Vent (Quantity: 1)

U-vent 6" PVC

### Leak Detection (Quantity: 1)

PPC Leak Detection Kit/Sensor (PolyPropylene)

**Pump Feed** (Quantity: 1)

Transition Fitting with Containment and Flex ♦

Outlet Endplate: 2" with containment around outlet pipe and built-in flex.

/Stainless Steel/EPDM/Stainless Steel with Expansion Joint PTFE

(Quantity: 1)

Hydro Test

(Quantity: 1)

Impact Test

(Quantity: 1)

Gel Test

(Quantity: 1)

Wall Thickness - Actual

Factory jargon and abbreviations  
automatically converted to full sentences  
and understood words.

**BASE/PAD** (Quantity: 1)

PolyBase: Crosslinked-PE tank base: 10' D, Flat

Color: Natural (yellowish white)

**Containment Tank** (Quantity: 1)

6650 SAFE-Tank ♦ Nested Containment Outside Tank

1.90 specific gravity wall thickness

Crosslinked Polyethylene (XLPE) ♦

Color: Natural (yellowish white)

WARRANTY: 5 Years, Full Replacement, Non-Prorated

More details around warranty and freight  
than what is included in a detail quote.

---

**System Subtotal:** ~~\$35,819.90~~ – Reduced to \$29,700

Freight/Shipping Estimate: \$3,200.00

*Quote pricing guaranteed 30 days, subject to change after 07-19-2025*

*Freight quoted is an estimate at time of quote. Actual freight charge will be passed through from carrier at time of shipment.*

## COMPONENTS IN THIS PROPOSAL

While the Tank Offering section above highlights the overall systems, this grid details individual components and accessories for a more complete look.

LABEL	STOCK#	DESCRIPTION	QTY
Tank System		Application: 4100 SLOPE-BOTTOM IMFO - SODIUM HYPOCHLORITE	
Usage:		4100 SLOPE-BOTTOM IMFO - SODIUM HYPOCHLORITE	
Chemical:		Sodium Hypochlorite, 9 - 15%, SPG 1.2	
Op Env:		Indoor/To 100F/NSF/Wind 1/Seismic 0/Not Pneumatically Filled>/Non-Scrubber	
Comments:		Flex: Customer to provide Flexible Connections for any bottom third sidewall fittings	
Nominal Tank>		Nominal Tank> 4100 gallon Vertical Imfo Sloped Floor towards IMFO outlet, Sodium Hypochlorite 9	
Primary Tank	71204100440	4100-gallon Vertical Imfo Sloped Floor towards IMFO outlet 1.90 specific gravity wall thickness, Xlpe, Color: Natural (yellowish white) Tank wall includes Oxidation Resistance additives (OR1000)◆	1
Comments:		WEIGHT: 1400 DIA: 8'-6" HT: 12'-11" TOP: 24" IMFO: 3"	
IMFO Base:		IMFO Base	
Tank Base	48100086610	PolyBase Crosslinked Polyethylene (XLPE)◆ 8' 6" D x 12" H to 6" H, Sloped, Color: Natural (yellowish white) Natural	1
Xfer: Inventory Warehouse does not match Order Warehouse			
Plug	8339	Plug 2" Rieke, Color: Natural (yellowish white) (polyethylene)(PPA-53-19-143)	1
Containment:		Customer Provided Containment Tank	
Lid/Cover:		Lid/Cover/Manway	
Lid/Manway	8340	Cover Assembly 24" Safe-Surge system◆ with built in emergency pressure relief from pneumatic filling PE	1
	3229	Gasket 24" Manway Cover 1/4" EPDM 32"OD x 24" ID	1
Fill/Discharge:		Fill/Discharge	
Fill	8048	Bulkhead fitting Assembly 2" Socket x thread CPVC/viton Gf	1
Comments:		To be installed at Flat Dome loc	
	11691	Elbow 2" Anti-Foam CPVC	1
Sidewall:		Sidewall Fittings	
IMFO DRAIN	8272	IMFO Molded Outlet Flange Threaded CPVC/Titanium/vt Gf/316SS	1
Overflow:		Overflow Fittings	
Overflow Fitting	8048	Bulkhead fitting Assembly Socket x thread CPVC/viton Gf	1

The **Detail** Quote (often sent or created by quote program) can be optionally included in a Boosted Quote like this as well. With or without line itemized pricing. Factory abbreviations changed to customer-friendly, commonly understood words.

## THIS PROPOSAL CONTAINS...

The following are referenced in one or more places above.

### 1) Crosslinked Polyethylene (XLPE) ☒ Included!



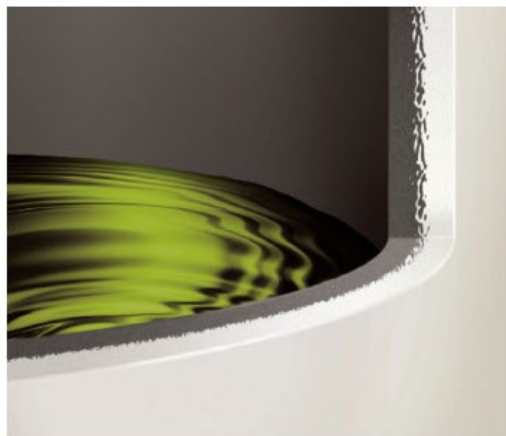
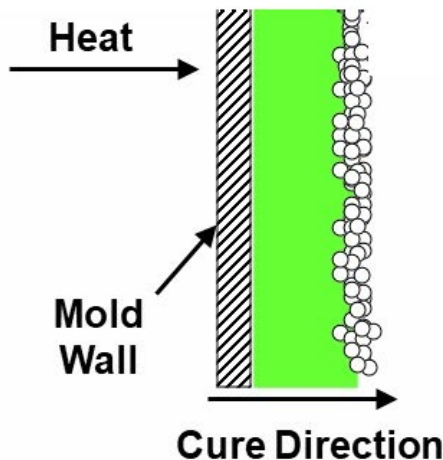
Value Differentiation bullet points and illustrations separate you from your competition. Otherwise, your client may think all plastic tanks are basically the same. These are custom to the features IN EACH QUOTE

Linear HDPE polymer chains are entangled, not bonded.

Crosslinked HDPE chains are bonded

- XLPE is still HDPE, but the HDPE polymer chains are crosslinked to each other for superior strength.
- XLPE is all about strength, not chemical compatibility. It is still HDPE, but stronger.
- XLPE is 5x stronger than linear HDPE. It is a thermoset vs thermoplastic (linear)
- 20 times the environmental stress crack resistance (ESCR) over linear HDPE.
- Considerably longer tank life (vs linear) & best warranty in the Industry.
- MORE INFO: and video demonstration- please visit [Crosslink vs Non-Crosslinked video](#)

### 2) Anti-Oxidation System (OR1000) ☒ Included!



Extends any PE tank life containing oxidizing chemicals.

- 4 times the antioxidant strength of any polyethylene on the market today.
- Polyethylene with OR additives is blended, baked in, and covalently bonded with rotomolding process- NOT just a liner.
- NSF61 Certified.
- Added as a 'double shot' towards end of cooking cycle leaving anti-oxidants in the field vs being 'cooked away'.
- Longest warranty in the Industry.

■ MORE INFO: and video demonstration- please visit [Engineered Resins for specific chemicals](#)

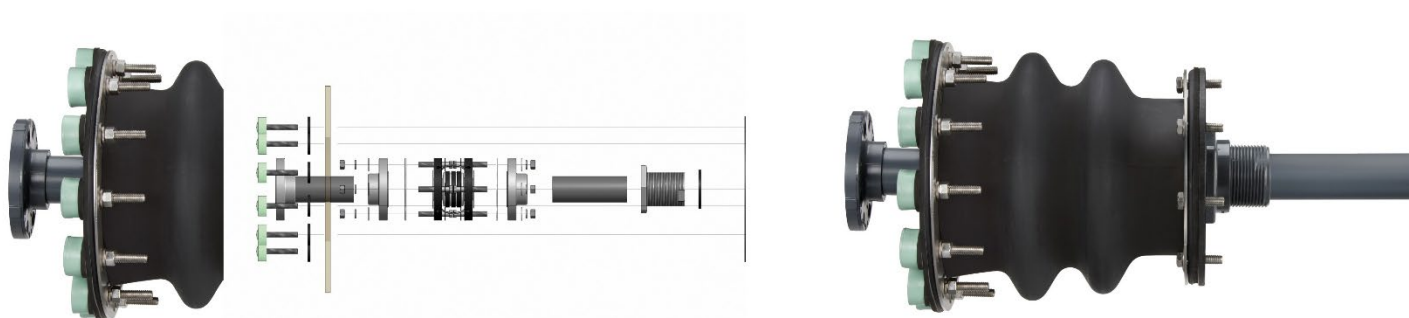
### 3) SAFE TANK SYSTEM ☒ Included!



#### A primary tank nested inside another containment tank (double wall tank)

- Containment tank meets 110% capacity of the primary tank.
- Covered containment so rain or wash water can not jeopardize the containment capacity or chemical reaction.
- Portable to new location vs concrete berm
- In event of breach chemical still useable (simply becomes a single wall tank).
- In event of breach no lost production time (Allows scheduling a repair vs Shut Down).
- Exterior tank acts as a sun shield and protects the contents of the tank from UV degradation.
- MORE INFO: Guides, pictures, benefits - please visit [SAFE-tank website info](#)

### 4) Transition Fitting ☒ Included!



**CONTAINED bottom discharge capability in a system that supports 110% secondary containment requirements. Some systems by others do not encapsulate the outlet and could empty contents when gasket fails.**

- Containment of the expansion joint and connections eliminates the threat of uncontained chemical leaks that could occur in the outlet piping.
- Piping layouts can be fully contained by connecting a dual-wall piping system onto the ANSI endplate fitting.



- Drain fittings that are flexible and move with the individual tanks.
- Meets 10 state standards for Federal, and State regulation compliance.
- MORE INFO: Pictures and guide, please visit [Transition Fitting](#)

#### 5) Best Warranty in the Industry. ☒ Included!



#### **No Proration**

Others provide only credit for unused time.



#### **Factory Field Service Department**

Others do not have Field Service to assist.



#### **Standard Published Warranty**

Others have no public published standard. Its case by case. Why?

Poly Processing is privately held, unlike others, so there are no shareholders to satisfy or committees to go through for approval. The whole system is replaced, not just remaining time credit dollars issued. Compare references to see who honors warranties.

More Info- please visit [Comparing Warranties](#)

Differentiation points at a Manufacturing level- Add, Delete, edit to include your own company differentiation points.

#### Additional Value from Poly Processing Company

- Over 50 years Manufacturing, Serving & Innovating for the chemical feed industry!
- Privately held. PPC cares about safety, innovation, & customers- not shareholders.
- Born from it's sister chemical company still operating- PPC knows chemical storage at a root level.
- Fastest deliveries and response times in the Industry.
- Technical Support staff-dozens of people across 3 plants- to assist you quickly- 12 hrs per day!
- Tanks built to ASTM D 1998 and certified with documentation.
- Factory 4 Hour Hydro Test on your finished tanks and signed documentation.
- Factory Impact Test per ASTM D1998 and documentation.
- Factory Gel test per ASTM D-1998 and documentation.
- Ultrasonic wall thickness testing per ASTM and signed documentation.
- NSF61 "system" certification for chemical- others only tank wall.
- Approval and As-Built drawings include full fitting details unlike others.
- Support Teams out of three factories in CA / LA / VA covers North America.
- 7 Regional Managers living in each area of country to assure your satisfaction.
- Factory Field Service Team that can come to your location for any need. [\[more\]](#)
- FDA Compliant.
- 3D CAD files available. 3D Drafting Team for custom needs.
- Turnkey Installation available with local contractor partners.
- 'Library of Congress for tanks'- none compare to our website resources.
- Project management team for after PO to shipment ease of business.
- Tanks washed and shrink wrapped for clean delivery. Others do not.

## FITTINGS AND ACCESSORIES REFERENCE

Please refer to proposal above for specific materials and sizes. The following exist on this proposal but this list may not be complete to every item quoted. Our website shows additional fittings if needed.



### PolyBase XLPE

A concrete base can also be poured, but this proposal, includes a base to set tank on. Base may be sloped or flat to match the style of tank floor (also sloped or flat). Since the molded in outlet (IMFO) is flush with tank floor, the flange therefore drops below tank floor. PolyBase will lift this flange 3-4 inches off floor. Alternatively, a floor can be notched to allow flange to drop into floor and not need this base.

Reference chart for accessories specifically mentioned in quote. Links even take your customer to additional website information!



### SAFE-surge Manway Cover

This lid provides emergency air surge relief protection for pneumatically filled tanks. Designed to ensure your tank maintains proper ACFM for safety and tank longevity, the hinge burps open at 6 inches of water column pressure. More Information: [Safe Surge Reference](#)



### Stainless 1-piece Coupling

Constructed entirely from chemical resistant 316 stainless steel, this fitting is laser cut from super heavy duty plate stock and robotically welded to exacting standards. Pictured is 1/2 inch - 2 inch (sizes above 2 inch have a circular face instead of square) See drawings  
More Info: [Other choices and drawings- click here](#)



### U-Vent

A common fitting not unique to Poly Processing, Standard venting for outdoor tanks. In PVC, in sizes 2 to 6 inches.  
More Info: [Other vent choices and drawings- click here](#)

**Ask your Frontline if  
you need your quote  
Boosted like this!**