

ProAlert®

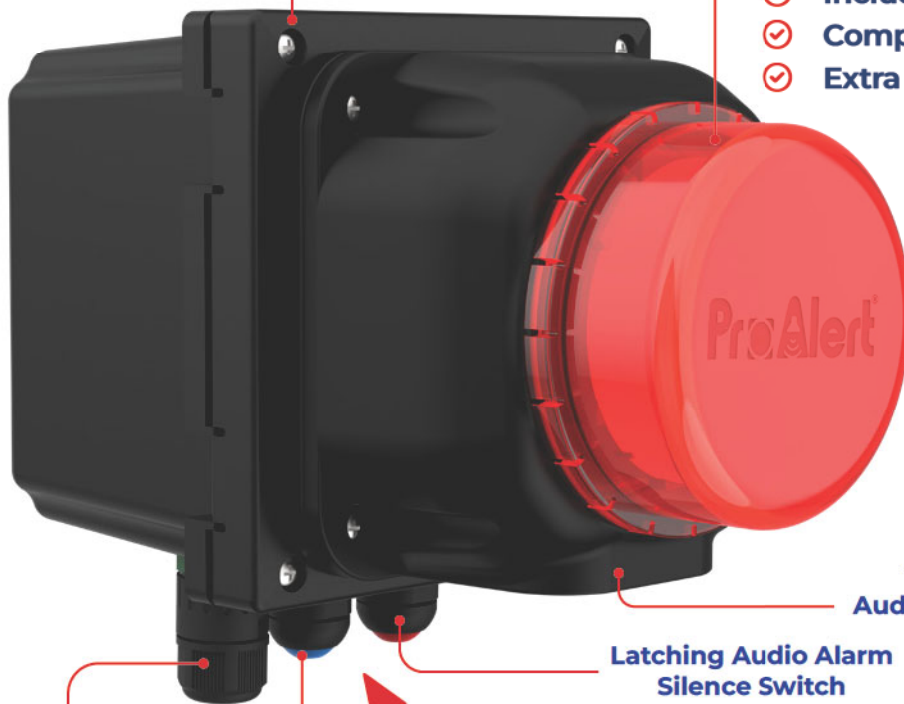
The Next Big Thing in Liquid Monitoring

All Plastic
NEMA 4X
Enclosure

Built in
Visual Alarm

Features

- ✓ High Intensity Red Alarm Light
- ✓ Pulse to Relay Output
- ✓ Super Loud 108dB Audible Alarm
- ✓ Silence Function | Light Remains On
- ✓ Rugged NEMA 4X Industrial Enclosure
- ✓ External Wall Mounting Brackets
- ✓ High Impact Plastic Polycarbonate Shell
- ✓ Includes 6' Power Cord + Watertight Cord
- ✓ Completely Pre-Wired
- ✓ Extra Output Contact to Remote Alarm or PLC



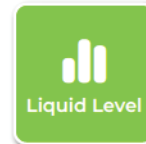
108dB
Audible Alarm

Latching Audio Alarm
Silence Switch

Alarm Test



Flow



Liquid Level



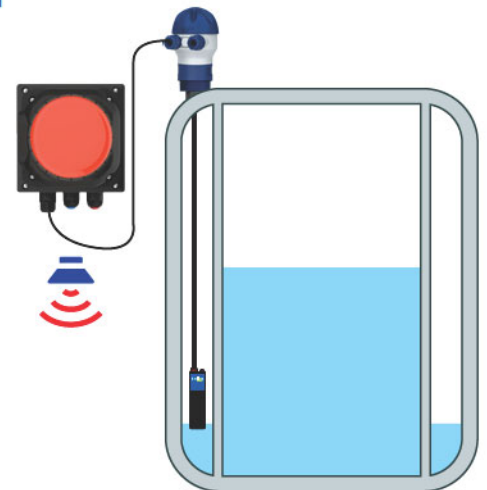
Analytical



Pressure



Leak
Detection



3 Easy Mounting Options



Wall Mount



Panel Mount



Pole/Pipe Mount

ABS

PC

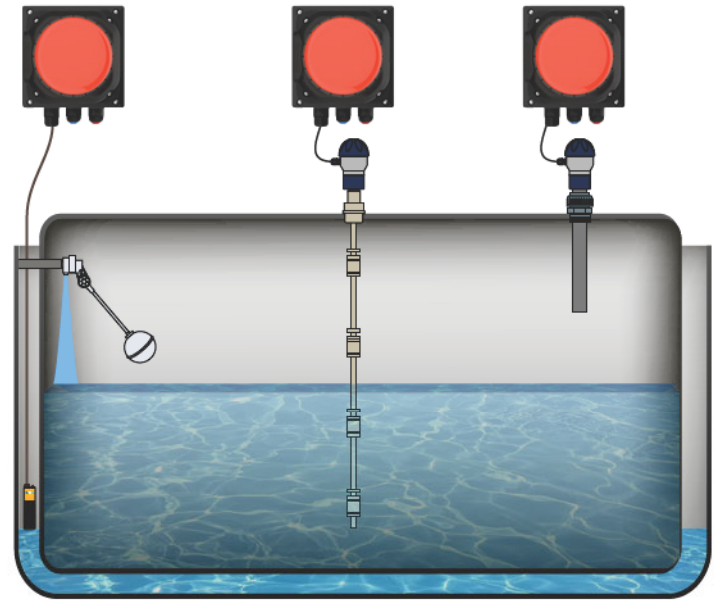


Typical Applications

- ✓ High High | Low Level Indication for Tanks | Sumps
- ✓ Bag | Filter Change Out
- ✓ Leak Detection
- ✓ Flow | No Flow Sensors | Pump Protection
- ✓ Upset Condition Notification

Specifications

- ✓ Dimensions | 7" X 5" X 4.5"
- ✓ Enclosure | NEMA 4X
- ✓ Weight | 2.1 lbs.
- ✓ 120VAC | 60Hz | 1 Amp
- ✓ Input Power | 100 - 240VAC



NOTE: The ProAlert® PA223 can be used in more than just leak detection applications. It is an excellent high/low level alarm or any other upset condition.

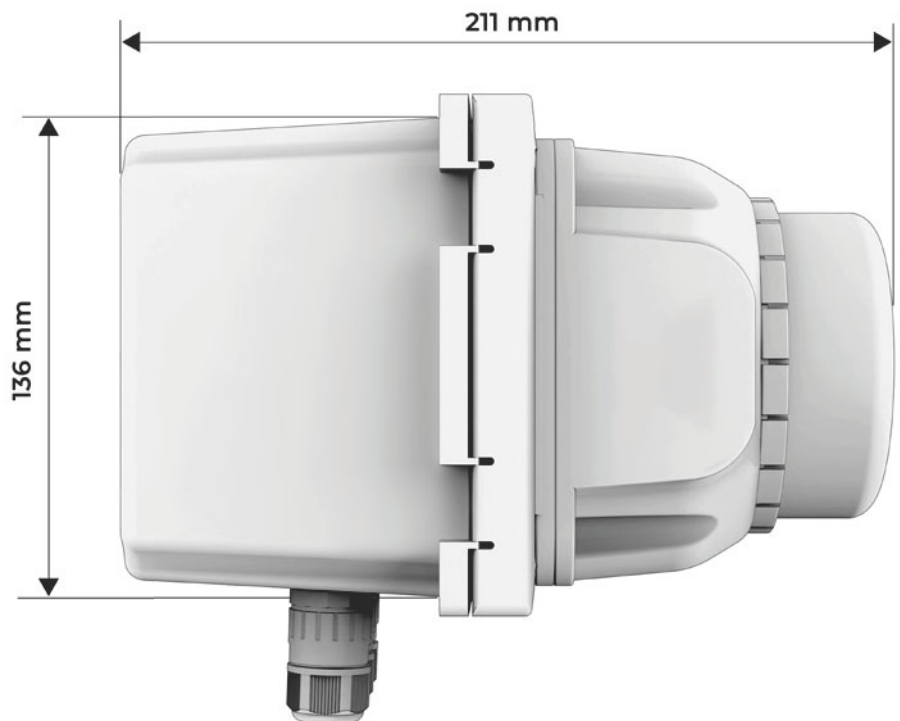
Model Selection

ProAlert® PA223

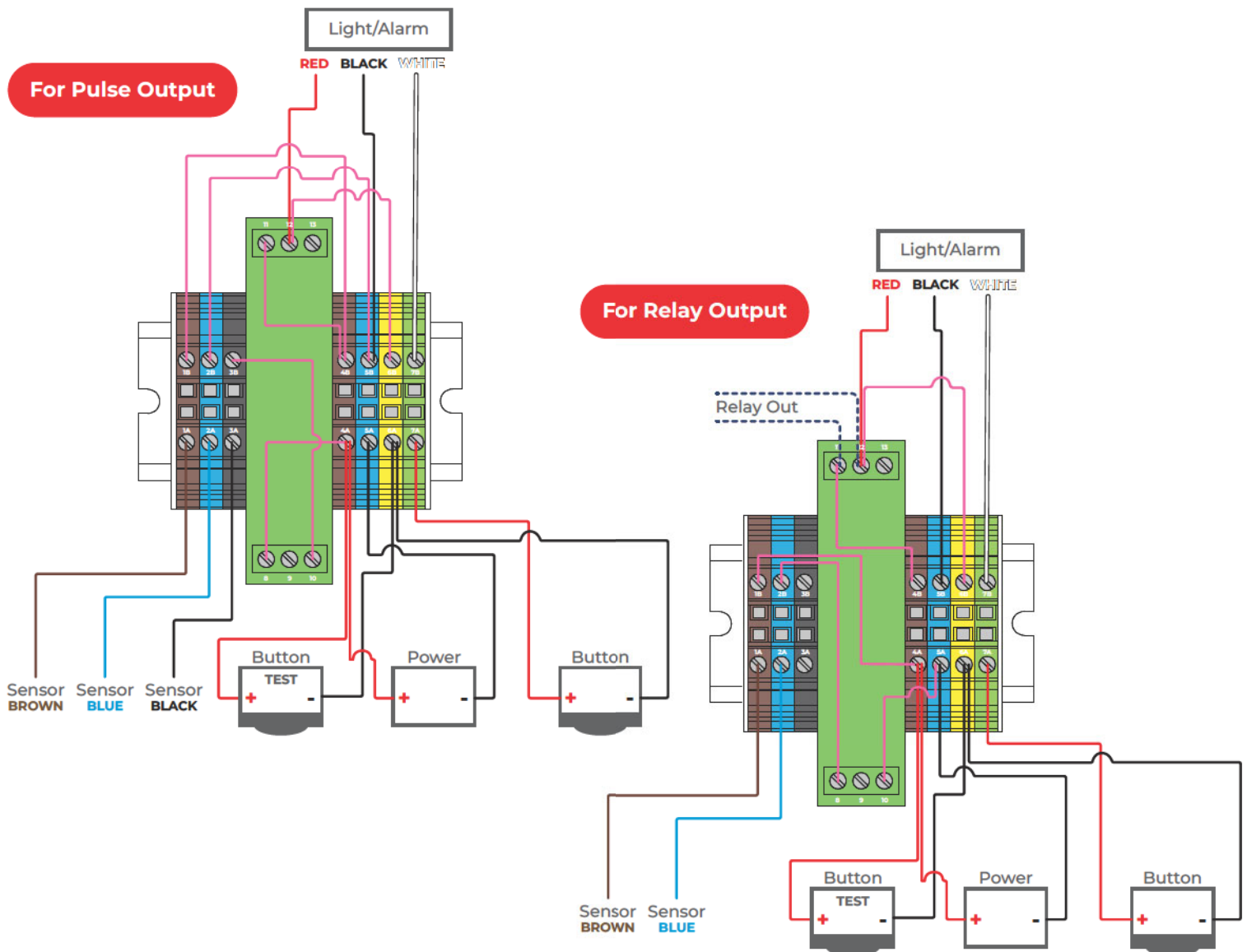
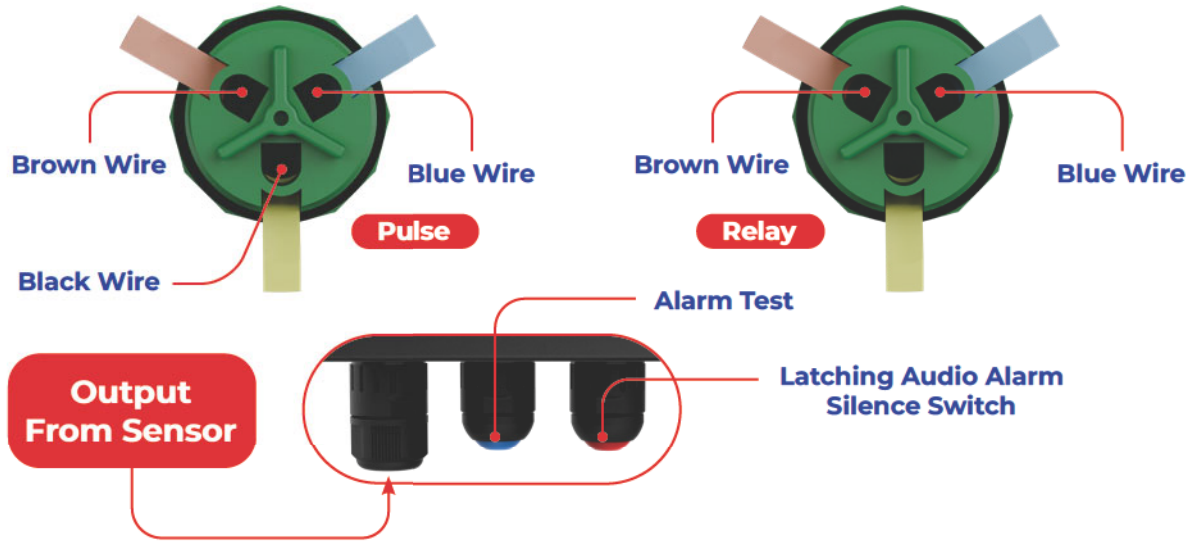
- 24VDC - Dry Contact Input

ProAlert® PA223-PR

- PNP | NPN Pulse
- Input - 5AMP Relay Timer Signal Output

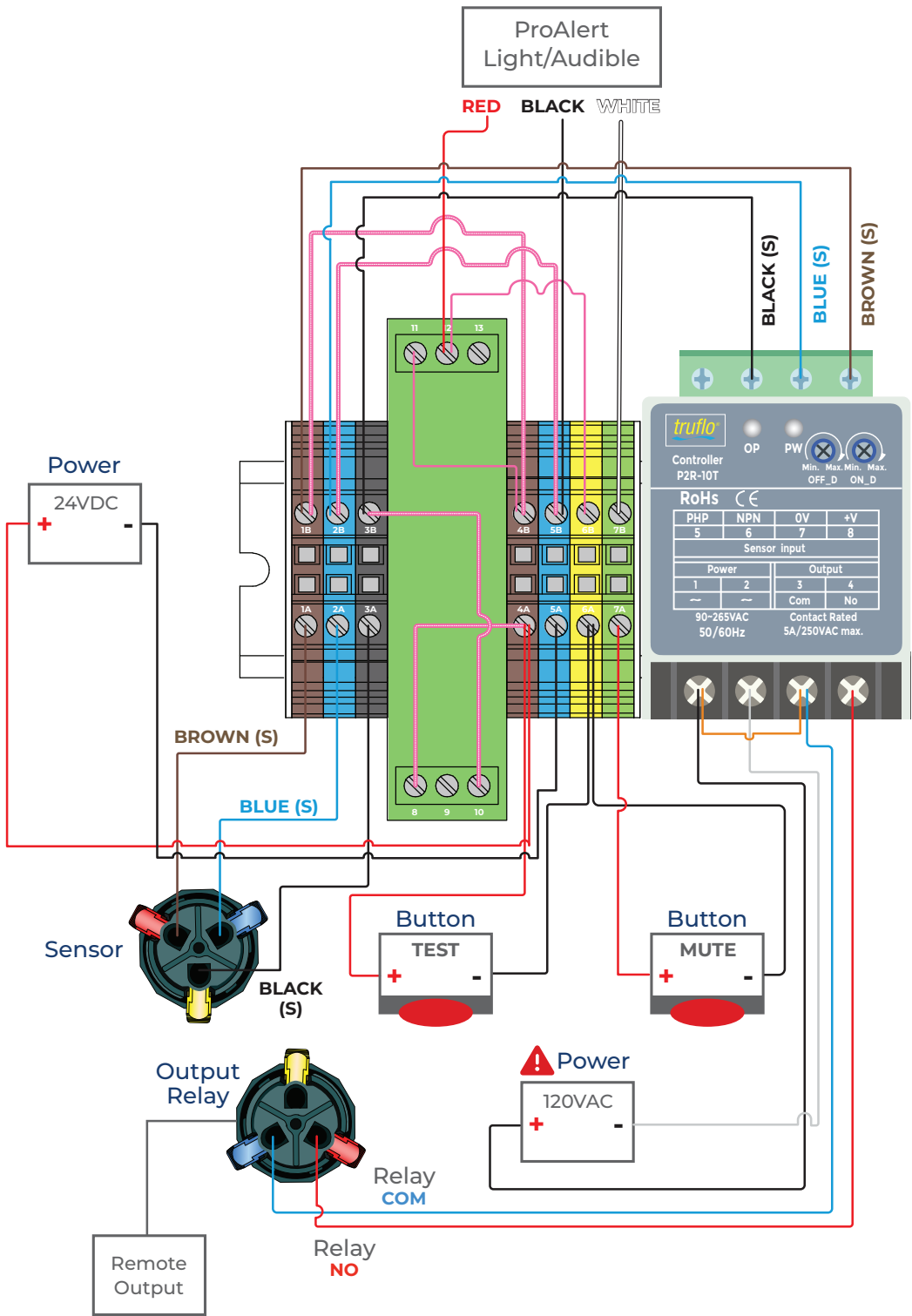


Wiring Diagram

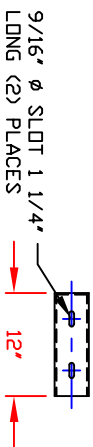
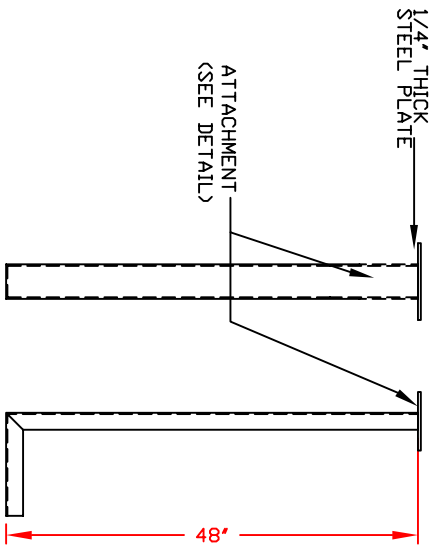


LevelPro® — ProAlert® 2

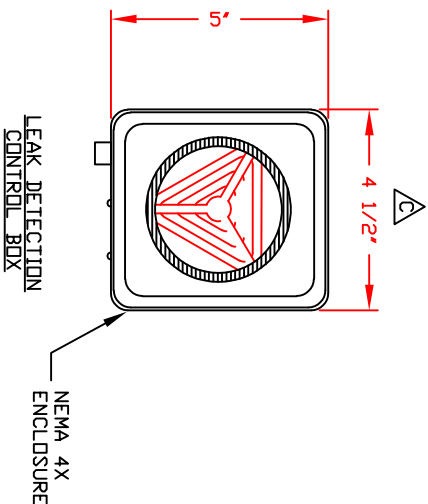
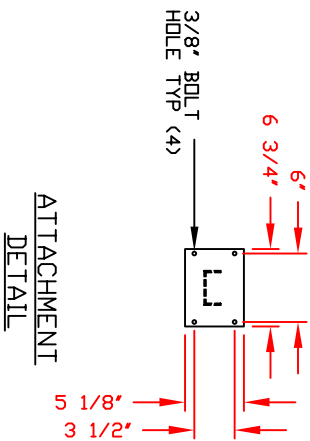
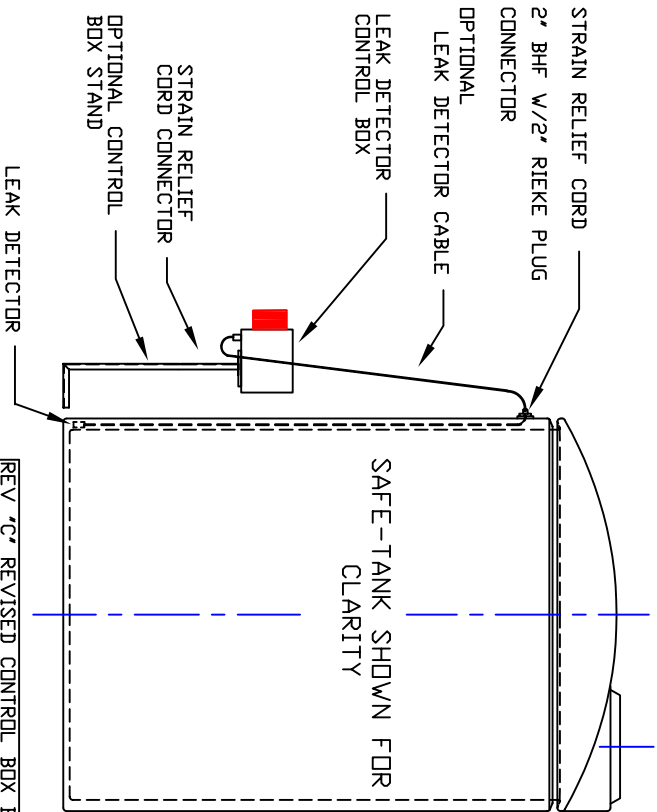
P2R Relay Controller Wiring Diagram



NON-CONTROLLED COPY
INFORMATION SUBJECT TO CHANGE WITHOUT NOTICE
VERIFY REV LEVEL OF PAPER COPY WITH REV LEVEL ON PPC WEB SITE




OPTIONAL CONTROL BOX STAND



NOTES
1. THIS IS A COMPUTER GENERATED DWG. DO NOT REVISE BY HAND.

CONFIDENTIAL PROPERTY OF
POLY PROCESSING COMPANY
NOT FOR REPRINT OR USE
WITHOUT PERMISSION

DWG TITLE
POLY LEVEL ELECTRONIC LEAK DETECTION DEVICE

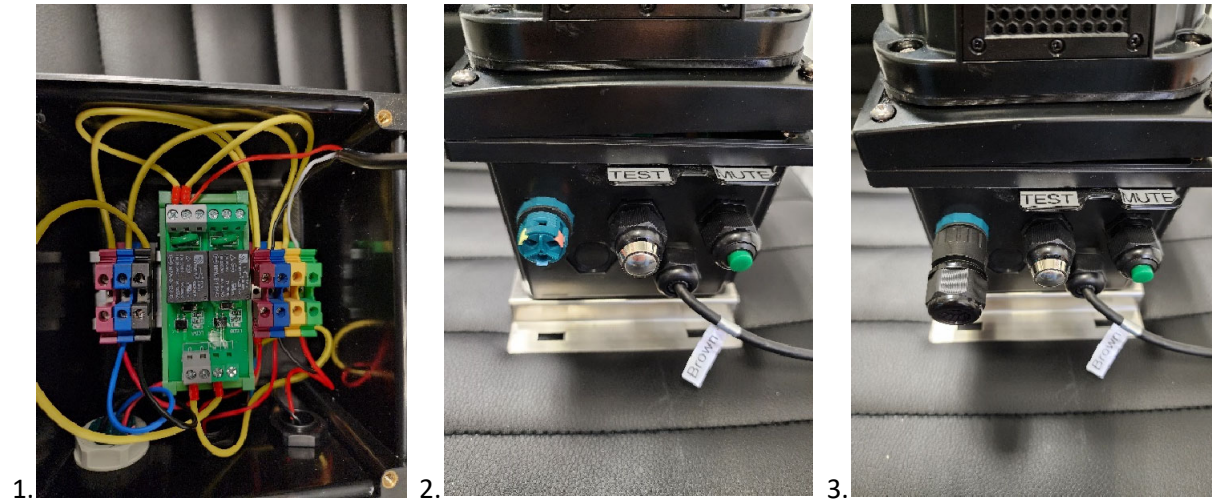
SCALE	NONE			DR	BHARPER
DATE	9/7/18	Poly Processing Company LLC		CK	BHARPER
SHEET	1 OF 1	COMPUTER FILE		REV	C
Central Region 800 W. 5th Street Lawrence, KS 66044 Fax: 785-843-8795					

REV 'C' REVISED CONTROL BOX BY BT 09/07/24 CK: BH
REV 'B' REVISED DIMENSIONS BY JB 4/27/10 CK: CD
REV 'A' REMOVED ELECTRIC SCHEMATIC DIAGRAM BY MBV 4/26/01 CK: JB

Poly Processing Leak Detection System

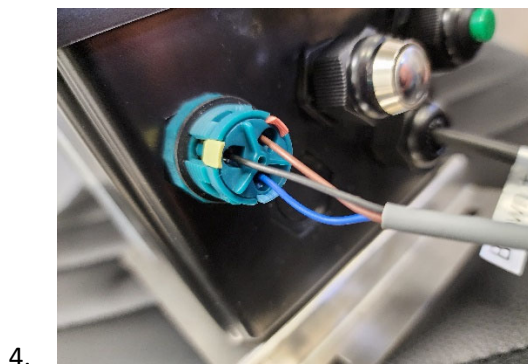
Wiring with Quick Connect on Pro-Alert 1000 PA223

Inside the Pro-Alert 1000 box the P2R Relay has been prewired to a quick connect which the LDS-YN-Leak Sensor will connect to.



From the LDS-YN Sensor there is a Blue, Black, and Brown wire and they should attach as follows:

1. Blue sensor wire will connect to the Blue quick connect terminal.
2. Black sensor wire will connect to the Yellow quick connect terminal.
3. Brown sensor wire will connect to the Orange quick connect terminal.



Troubleshooting:

If the sensor is not working properly follow the following steps:

1. If sensor is in constant state of alarm
 - a. Place sensor 4" above a cup of water and turn the potentiometer until the system quits alarming. This will calibrate the sensor to detect a liquid 4" from contact.
2. This unit does not provide a 120v output to run to a PLC/Skada system. It only provides a 12-14v output.